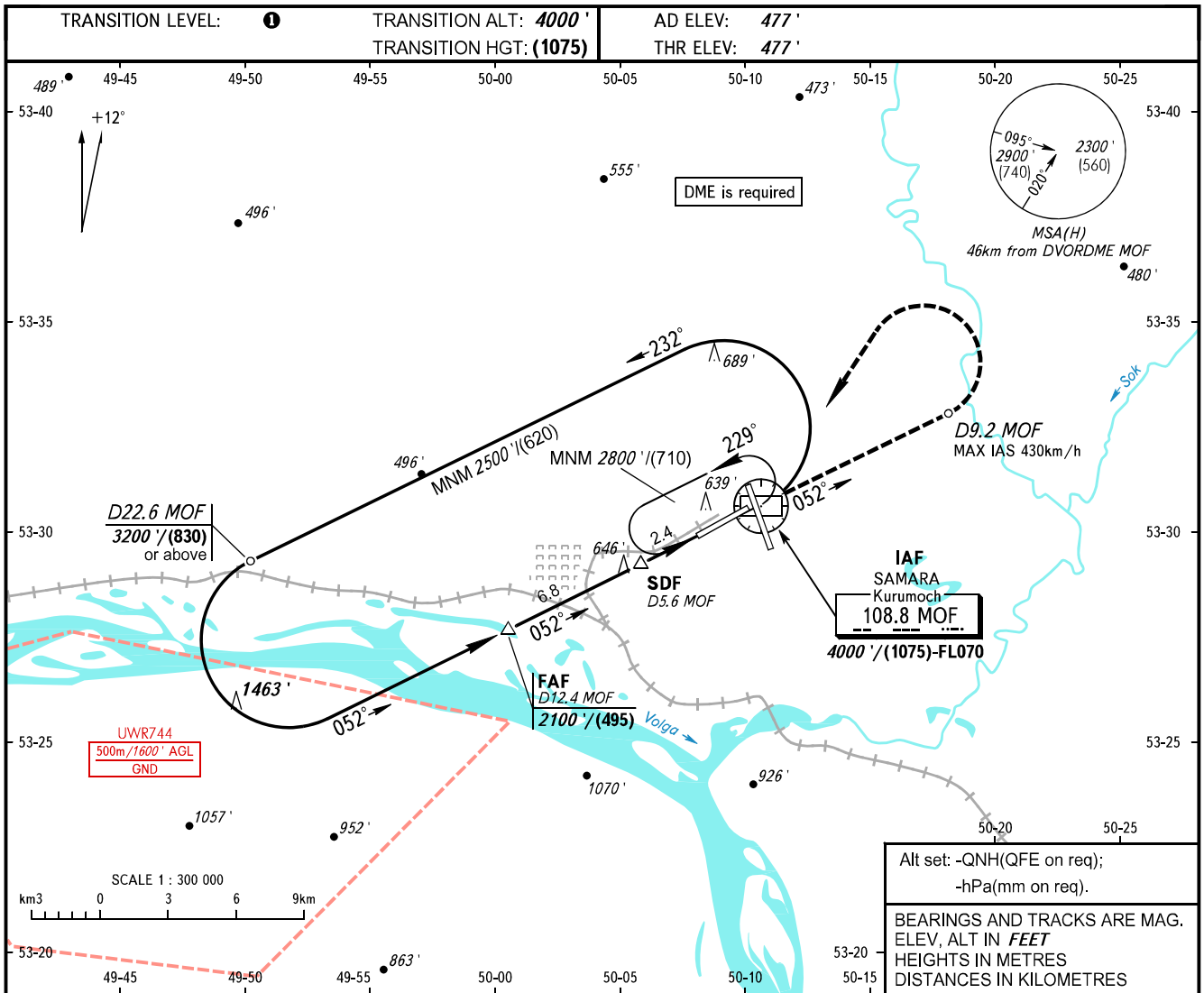


**INSTRUMENT
APPROACH
CHART - ICAO**

RADAR	128.000
TOWER	118.200

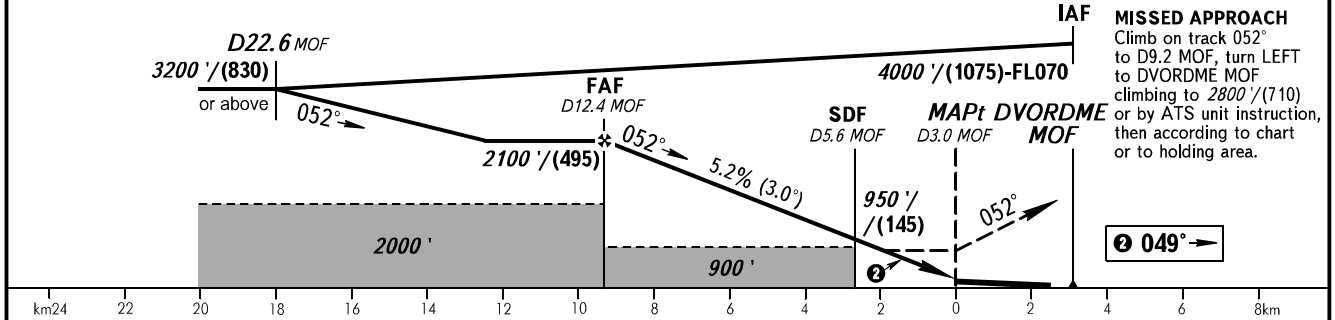
**SAMARA, RUSSIA
KURUMOCH
DVOR RWY 05**



Alt set: -QNH(QFE on req);
-hPa(mm on req).

BEARINGS AND TRACKS ARE MAG. ELEV, ALT IN FEET HEIGHTS IN METRES DISTANCES IN KILOMETRES

DME MOF	12.4	10.0	8.0	6.0
ALTITUDE	2100'	1660'	1360'	1020'



OCA(H)		A	B	C	D
Straight-in Approach	With SDF	870' (390')	870' (390')	870' (390')	870' (390')
	WO SDF	900' (420')	900' (420')	900' (420')	900' (420')
Circling		940' (460')	980' (500')	1090' (610')	1220' (740')

1 TRANSITION LEVEL:
- FL050 when QNH is 1013 hPa (760mm mercury column) or above;
- FL060 when QNH is 977 hPa (733mm mercury column) or above, but less than 1013 hPa (760mm mercury column);
- FL070 when QNH is less than 977 hPa (733mm mercury column).

WARNING:
1. Final approach track is offset by 3° from the RCL.
2. MAPt at D3.0 MOF. Timing not authorized for defining MAPt.

GROUND SPEED	km/h	150	180	210	240	270	300	330	360	390
RATE OF DESCENT	m/s	2.2	2.6	3.0	3.5	3.9	4.3	4.8	5.2	5.6
RATE OF DESCENT	ft/min	427	512	597	682	768	853	938	1024	1109