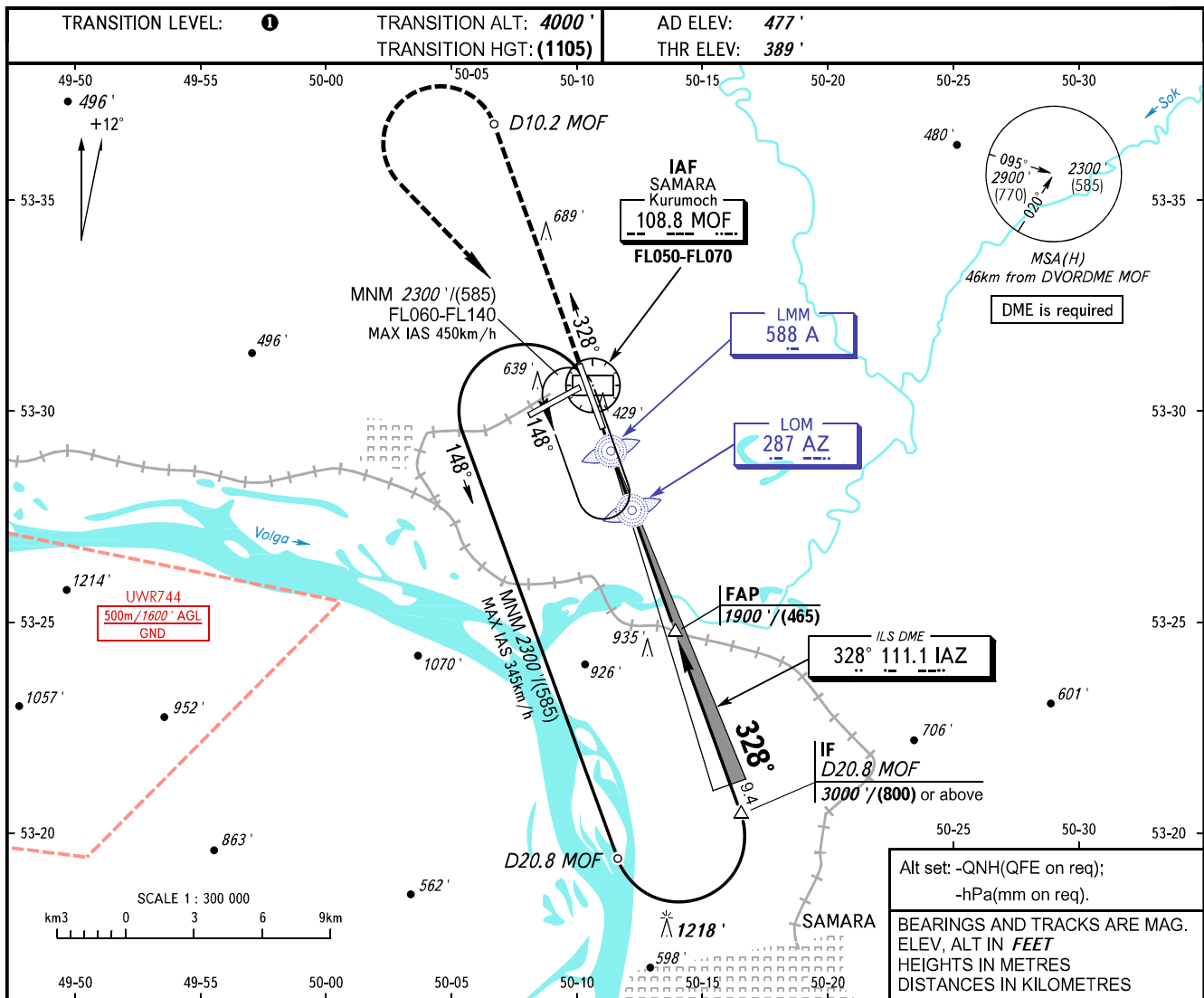


**INSTRUMENT
APPROACH
CHART - ICAO**

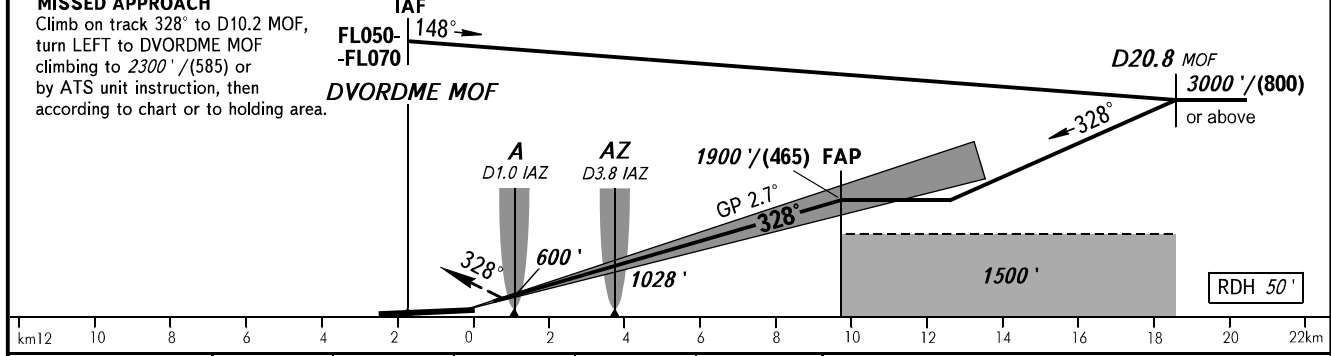
**SAMARA, RUSSIA
KURUMOCH
ILS Y CAT I RWY 33**

RADAR	128.000
TOWER	118.200



Alt set: -QNH(QFE on req);
-hPa(mm on req).

BEARINGS AND TRACKS ARE MAG.
ELEV, ALT IN FEET
HEIGHTS IN METRES
DISTANCES IN KILOMETRES



OCA(H)		A	B	C	D	DL	① TRANSITION LEVEL: - FL050 when QNH is 1013 hPa (760mm mercury column) or above; - FL060 when QNH is 977 hPa (733mm mercury column) or above, but less than 1013 hPa (760mm mercury column); - FL070 when QNH is less than 977 hPa (733mm mercury column). WARNING Zero range of DME IAZ is indicated at RWY 33 THR.				
Straight-in	CAT I	553' (164')	565' (176')	574' (185')	585' (196')	585' (196')					
	Approach										
Circling		940' (460')	980' (500')	1090' (610')	1220' (740')	1220' (740')					
GROUND SPEED		km/h	150	180	210	240	270	300	330	360	390
RATE OF DESCENT		m/s	2.0	2.4	2.7	3.1	3.5	3.9	4.3	4.7	5.1
RATE OF DESCENT		ft/min	385	463	540	617	694	771	848	925	1002