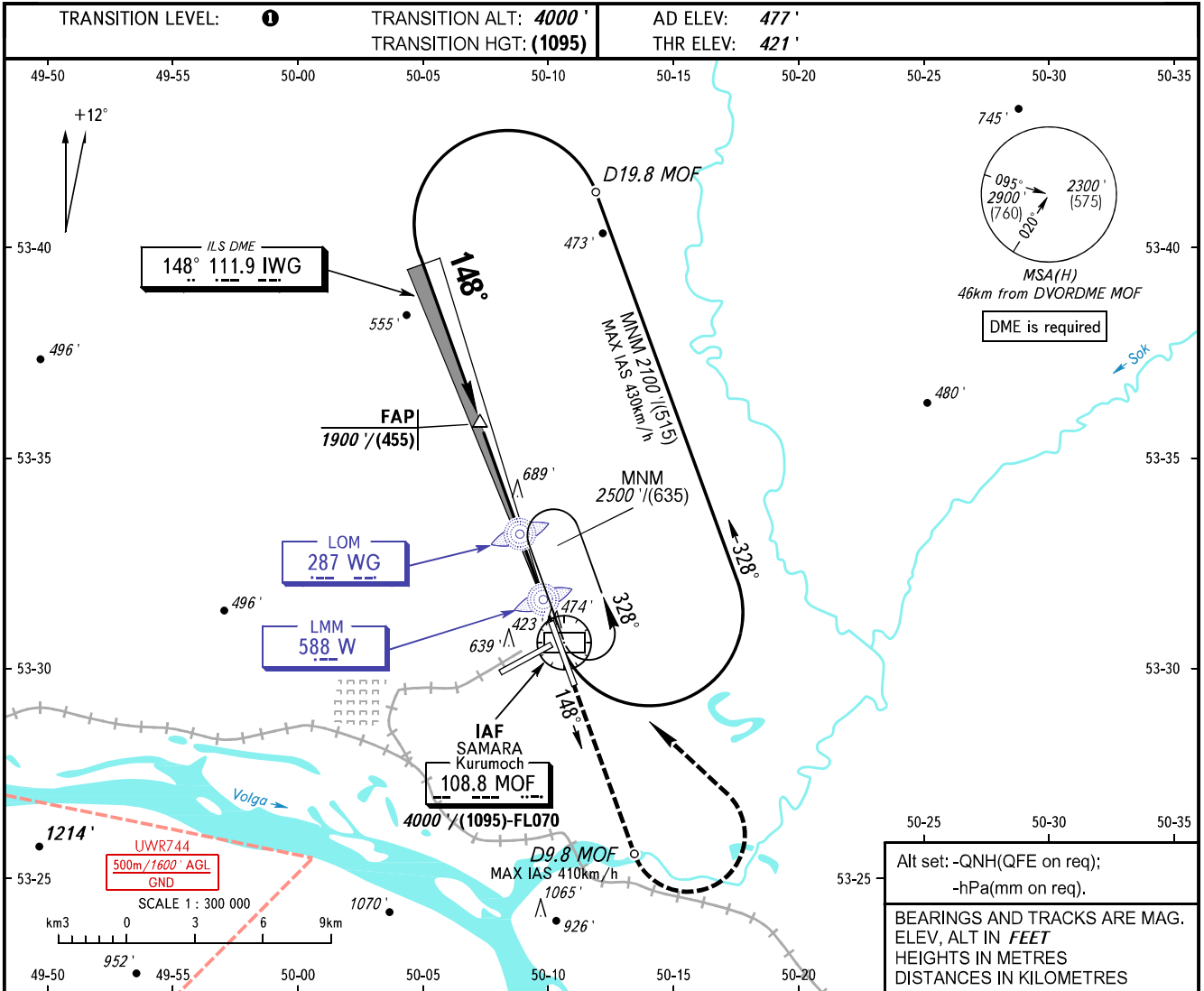


**INSTRUMENT
APPROACH
CHART - ICAO**

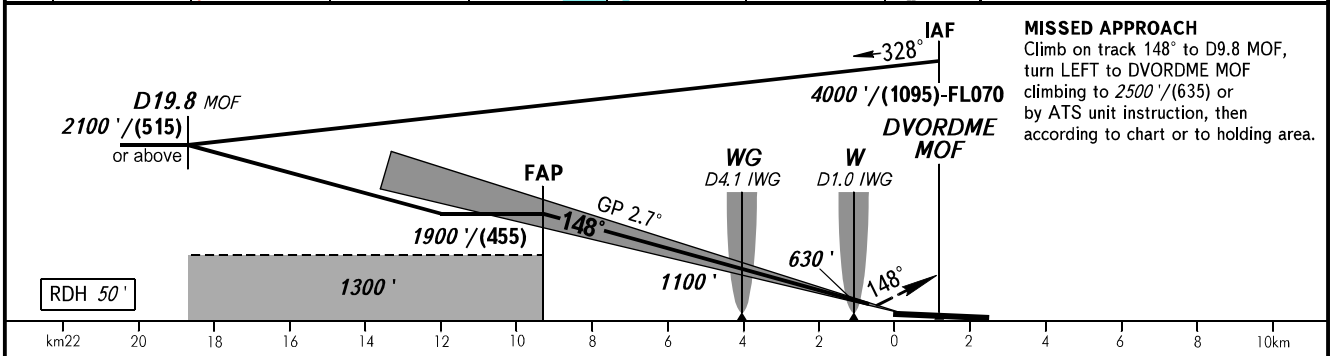
RADAR	128.000
TOWER	118.200

SAMARA, RUSSIA
KURUMOCH
ILS Y CAT I/II/III RWY 15



Alt set: -QNH(QFE on req);
-hPa(mm on req).

BEARINGS AND TRACKS ARE MAG.
ELEV, ALT IN FEET
HEIGHTS IN METRES
DISTANCES IN KILOMETRES



MISSED APPROACH
Climb on track 148° to D9.8 MOF,
turn LEFT to DVORDME MOF
climbing to 2500' / (635) or
by ATS unit instruction, then
according to chart or to holding area.

OCA(H)		A	B	C	D	DL
Straight-in	CAT I	584' (163')	596' (175')	605' (184')	616' (195')	616' (195')
	CAT II	474' (54')	486' (66')	499' (79')	515' (95')	516' (96')
Approach	CAT IIIA	APPROVED				
Circling		940' (460')	980' (500')	1090' (610')	1220' (740')	1220' (740')

1 TRANSITION LEVEL:
- FL050 when QNH is 1013 hPa (760mm mercury column)
or above;
- FL060 when QNH is 977 hPa (733mm mercury column)
or above, but less than 1013 hPa (760mm mercury
column);
- FL070 when QNH is less than 977 hPa (733mm mercury
column).

WARNING
Zero range of DME IWG is indicated at RWY 15 THR.

GROUND SPEED	km/h	150	180	210	240	270	300	330	360	390
RATE OF DESCENT	m/s	2.0	2.4	2.7	3.1	3.5	3.9	4.3	4.7	5.1
RATE OF DESCENT	ft/min	385	463	540	617	694	771	848	925	1002

CHANGE: New chart