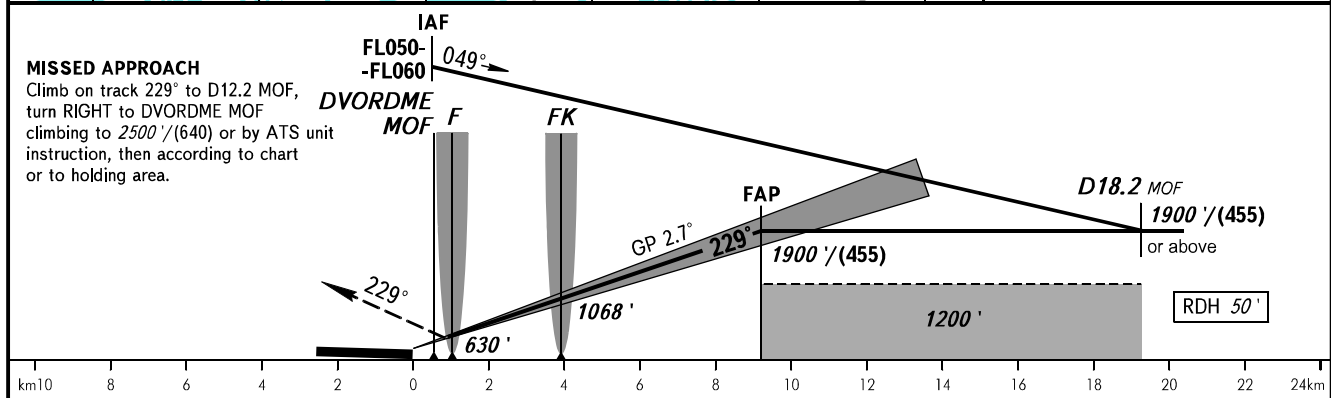
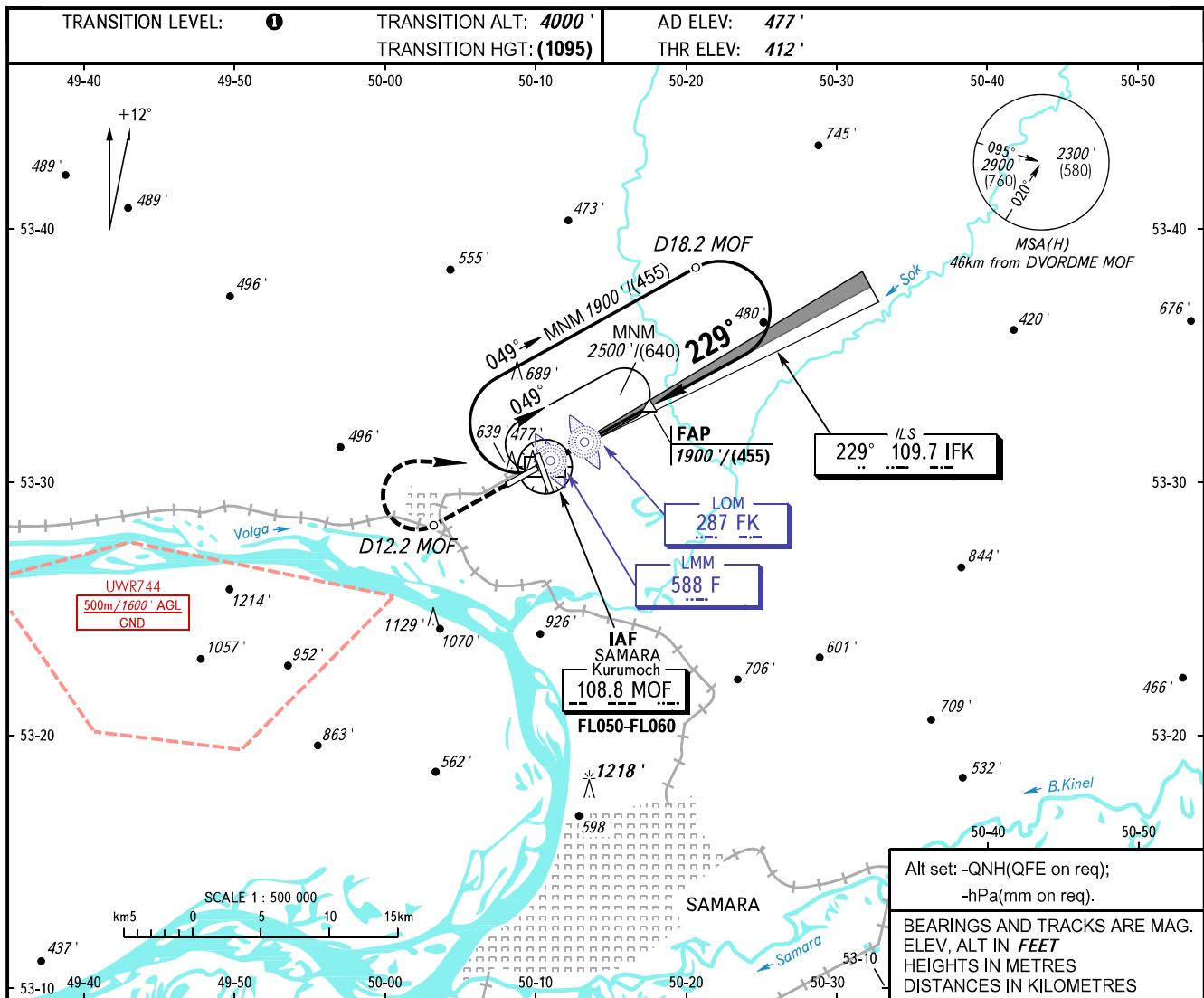


**INSTRUMENT
APPROACH
CHART - ICAO**

RADAR	128.000
TOWER	118.200

**SAMARA, RUSSIA
KURUMOCH
ILS Y CAT I RWY 23**



MISSED APPROACH		Climb on track 229° to D12.2 MOF, turn RIGHT to DVORDME MOF climbing to 2500' / (640) or by ATS unit instruction, then according to chart or to holding area.										
OCA(H)		A	B	C	D	DL	1 TRANSITION LEVEL: - FL050 when QNH is 1013 hPa (760mm mercury column) or above; - FL060 when QNH is 977 hPa (733mm mercury column) or above, but less than 1013 hPa (760mm mercury column); - FL070 when QNH is less than 977 hPa (733mm mercury column).					
Straight-in	CAT I	560' (150')	570' (160')	580' (170')	592' (182')	595' (185')						
	Approach											
Circling		940' (460')	980' (500')	1090' (610')	1220' (740')	1220' (740')						
GROUND SPEED		km/h		150	180	210	240	270	300	330	360	390
RATE OF DESCENT		m/s		2.0	2.4	2.7	3.1	3.5	3.9	4.3	4.7	5.1
RATE OF DESCENT		ft/min		385	463	540	617	694	771	848	925	1002