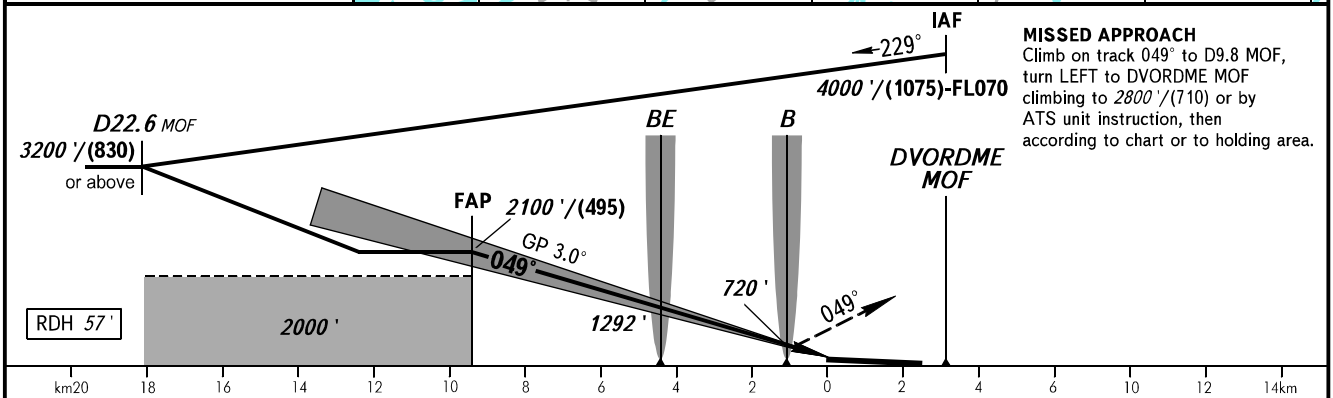
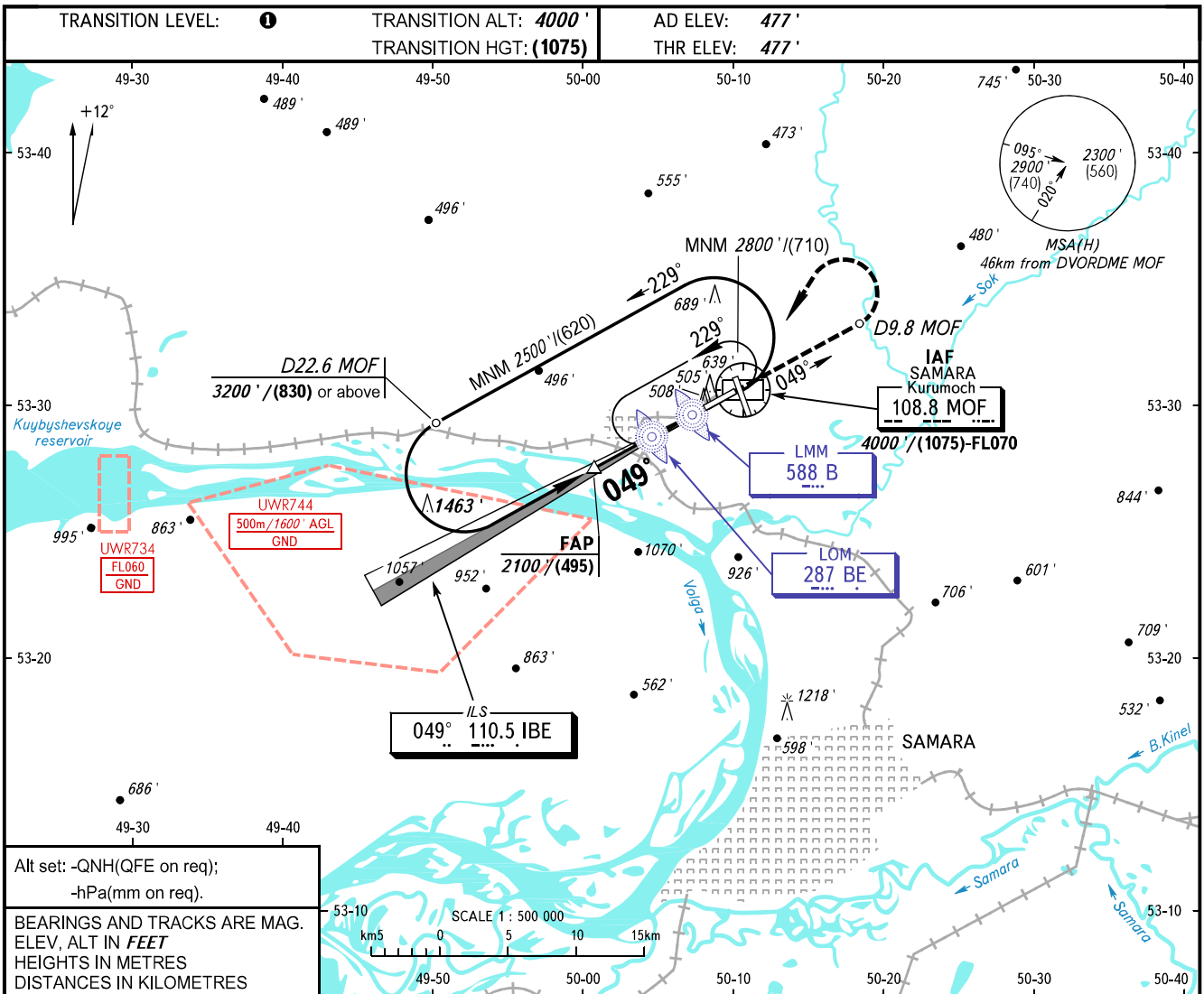


**INSTRUMENT  
APPROACH  
CHART - ICAO**

RADAR	128.000
TOWER	118.200

**SAMARA, RUSSIA  
KURUMOCH  
ILS Y CAT I RWY 05**



OCA(H)		A	B	C	D	DL
Straight-in	<b>CAT I</b>	635' (158')	647' (170')	658' (181')	669' (192')	669' (192')
	Approach					
Circling		940' (460')	980' (500')	1090' (610')	1220' (740')	1220' (740')

**1** TRANSITION LEVEL:  
 - FL050 when QNH is 1013 hPa (760mm mercury column) or above;  
 - FL060 when QNH is 977 hPa (733mm mercury column) or above, but less than 1013 hPa (760mm mercury column);  
 - FL070 when QNH is less than 977 hPa (733mm mercury column).

GROUND SPEED		km/h	150	180	210	240	270	300	330	360	390
RATE OF DESCENT		m/s	2.2	2.6	3.0	3.5	3.9	4.3	4.8	5.2	5.6
RATE OF DESCENT		ft/min	427	512	597	682	768	853	938	1024	1109

CHANGE: New chart