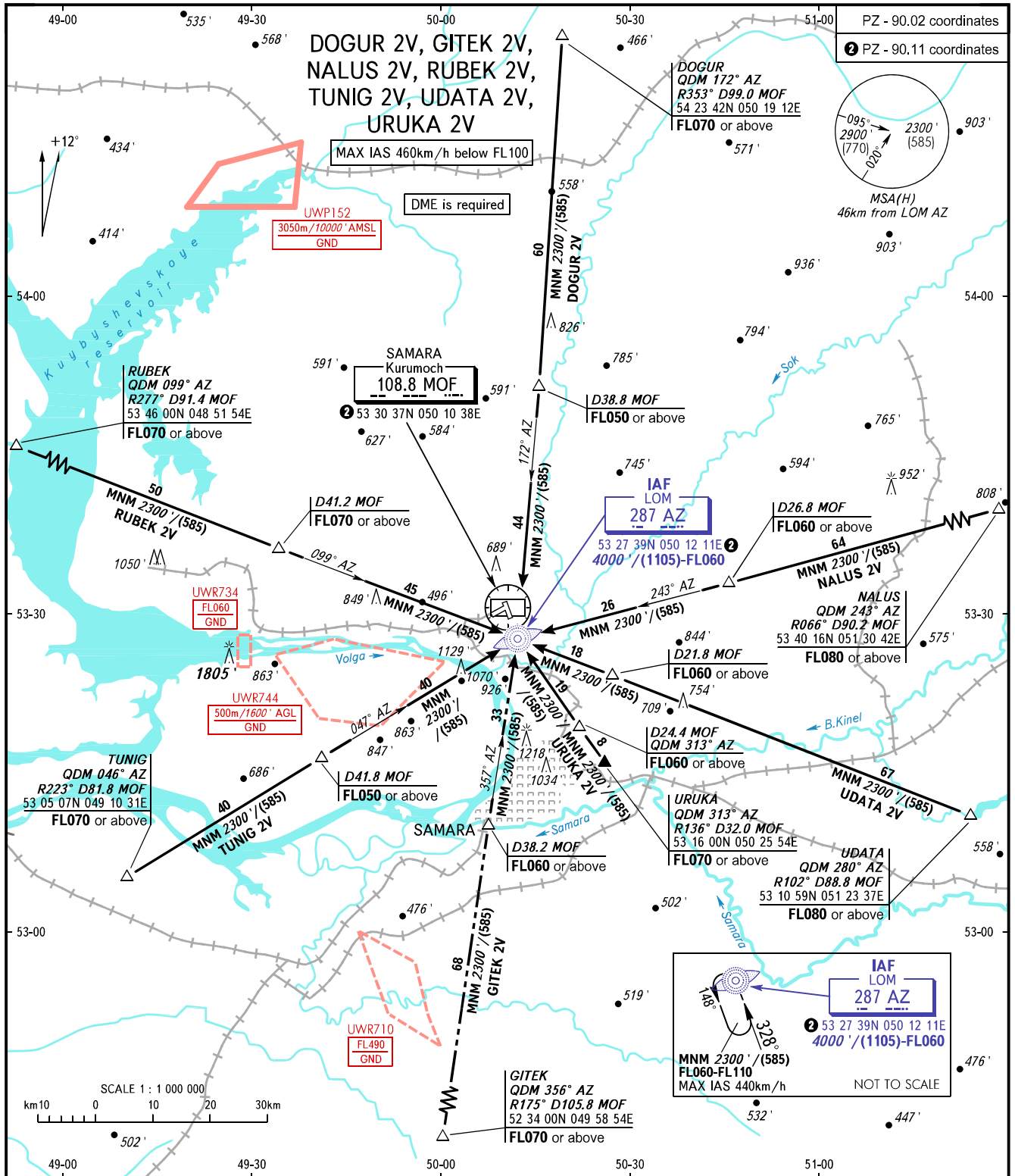


**SAMARA, RUSSIA**  
KURUMOCH  
RWY 33

**STANDARD ARRIVAL CHART**  
INSTRUMENT (STAR) - ICAO

TRANSITION  
LEVEL: **1**



APPROACH	<b>130.800</b>
RADAR	<b>128.000</b>
TOWER	<b>118.200</b>

- 1** TRANSITION LEVEL:
- FL050 when QNH is 1013 hPa (760mm mercury column) or above;
  - FL060 when QNH is 977 hPa (733mm mercury column) or above, but less than 1013 hPa (760mm mercury column);
  - FL070 when QNH is less than 977 hPa (733mm mercury column).

**WARNING**

STAR GITEK 2V requires permission to overfly UWR710 (during activity) or ATS unit coordination.

BEARINGS AND TRACKS ARE MAGNETIC  
ALTITUDES AND ELEVATIONS IN FEET  
HEIGHTS IN METRES  
DISTANCES IN KILOMETRES

Alt set: -QNH(QFE on req);  
-hPa(mm on req).