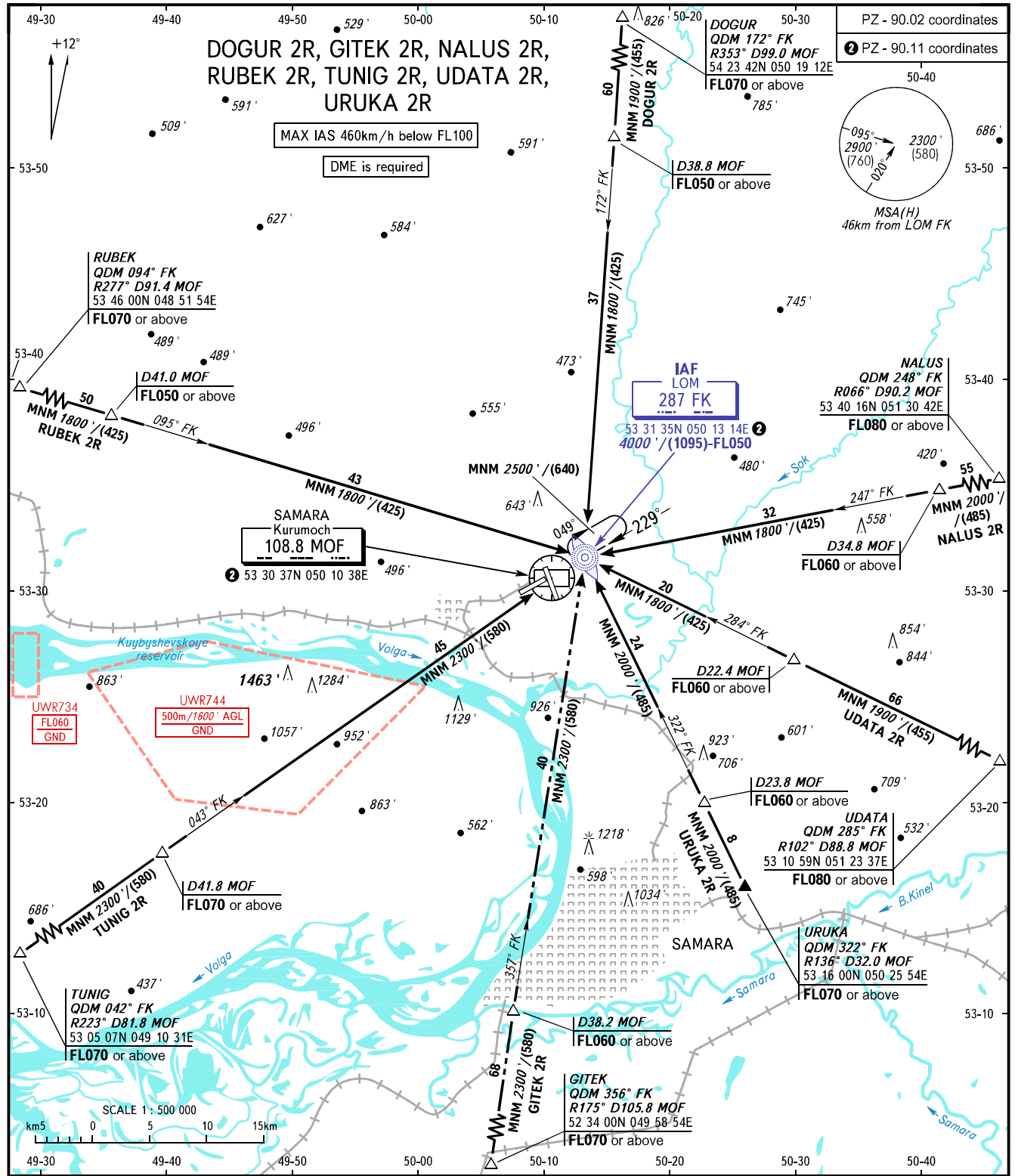


STANDARD ARRIVAL CHART
INSTRUMENT (STAR) - ICAO

SAMARA, RUSSIA
KURUMOCH
RWY 23

TRANSITION
LEVEL: ①



APPROACH	130.800
RADAR	128.000
TOWER	118.200

BEARINGS AND TRACKS ARE MAGNETIC	Alt set: -QNH(QFE on req);
ALTITUDES AND ELEVATIONS IN FEET	-hPa(mm on req).
HEIGHTS IN METRES	
DISTANCES IN KILOMETRES	

① TRANSITION LEVEL:
- FL050 when QNH is 1013 hPa (760mm mercury column) or above;
- FL060 when QNH is 977 hPa (733mm mercury column) or above, but less than 1013 hPa (760mm mercury column);
- FL070 when QNH is less than 977 hPa (733mm mercury column).

WARNING
STAR GITEK 2R requires permission to overfly UWR710 (during activity) or ATS unit coordination.

CHANGE: New chart