

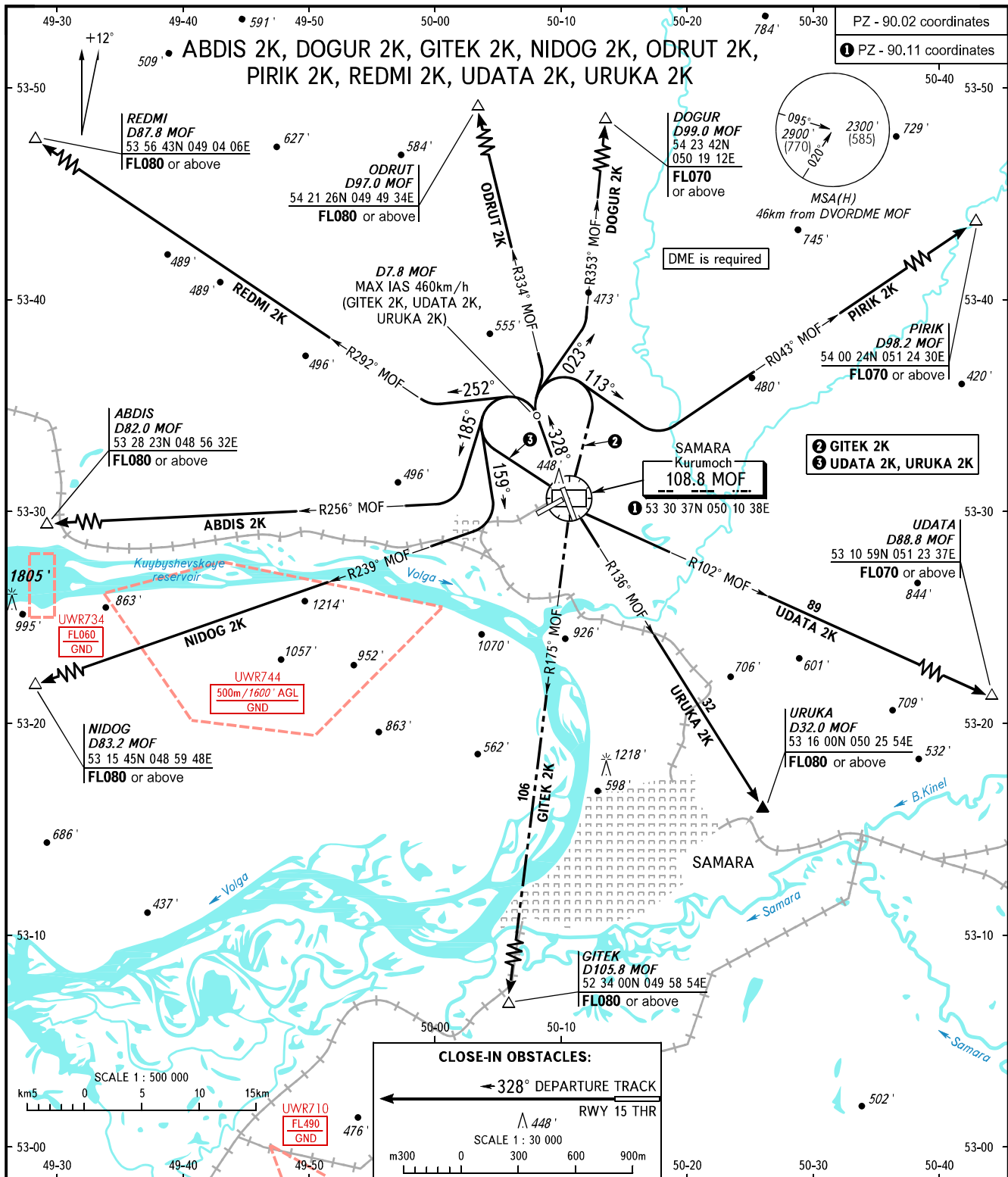
STANDARD DEPARTURE CHART  
INSTRUMENT (SID) - ICAO

TRANSITION ALT: **4000'**  
TRANSITION HGT: **(1105)**

**SAMARA, RUSSIA**

KURUMOCH

**RWY 33**



TOWER	118.200
RADAR	128.000
APPROACH	130.800

Alt set: -QNH(QFE on req);  
-hPa(mm on req).

**WARNING:**

- There are close-in obstacles.
- MNM climb gradient due to the airspace structure:
  - 4.2% up to 6900' for ABDIS 2K;
  - 3.6% up to FL050 for DOGUR 2K;
  - 4.3% up to 3400' for GITEK 2K;
  - 4.2% up to 6000' for NIDOG 2K;
  - 3.7% up to FL050 for ODRUT 2K;
  - 3.4% up to FL060 for UDATA 2K;
  - 3.9% up to FL080 for URUKA 2K.
- SID GITEK 2K requires permission to overfly UWR710 (during activity) or ATS unit coordination.

BEARINGS AND TRACKS ARE MAGNETIC  
ALTITUDES AND ELEVATIONS IN FEET  
HEIGHTS IN METRES  
DISTANCES IN KILOMETRES