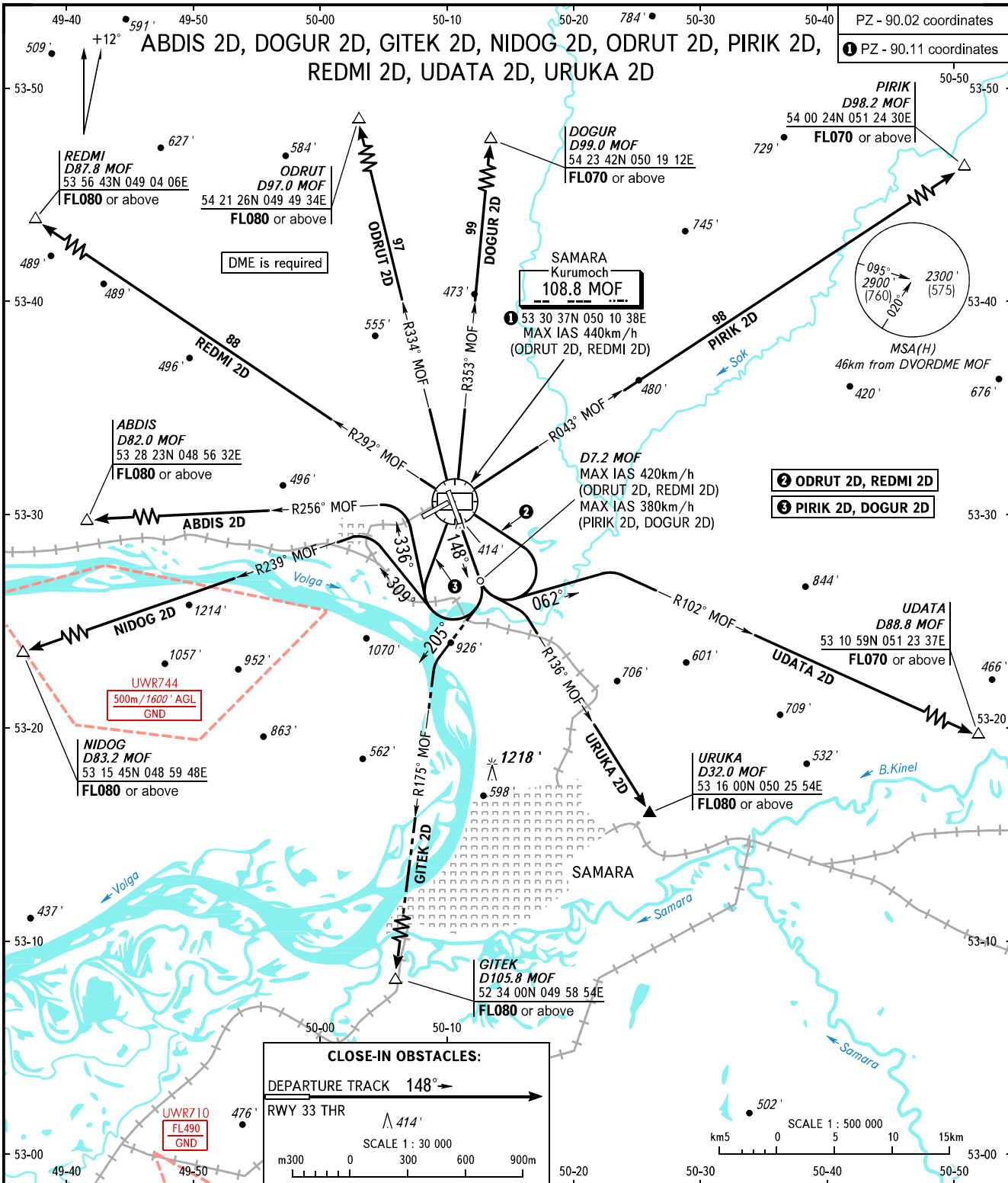


STANDARD DEPARTURE CHART
INSTRUMENT (SID) - ICAO

TRANSITION ALT: 4000'
TRANSITION HGT: (1095)

SAMARA, RUSSIA
KURUMOCH
RWY 15



TOWER	118.200	WARNING: 1. There are close-in obstacles. 2. MNM climb gradient due to the airspace structure: - 5.4% up to 3500' for ABDIS 2D; - 5.4% up to 3500' for NIDOG 2D; - 4.6% up to FL060 for GITEK 2D; - 3.8% up to FL110 for ODRUT 2D; - 7.7% up to FL080 for URUKA 2D; - 7.0% up to FL060 for UDATA 2D. 3. SID GITEK 2D requires permission to overfly UWR710 (during activity) or ATS unit coordination.
RADAR	128.000	
APPROACH	130.800	
BEARINGS AND TRACKS ARE MAGNETIC ALTITUDES AND ELEVATIONS IN FEET HEIGHTS IN METRES DISTANCES IN KILOMETRES		Alt set: -QNH(QFE on req); -hPa(mm on req).

CHANGE: New chart