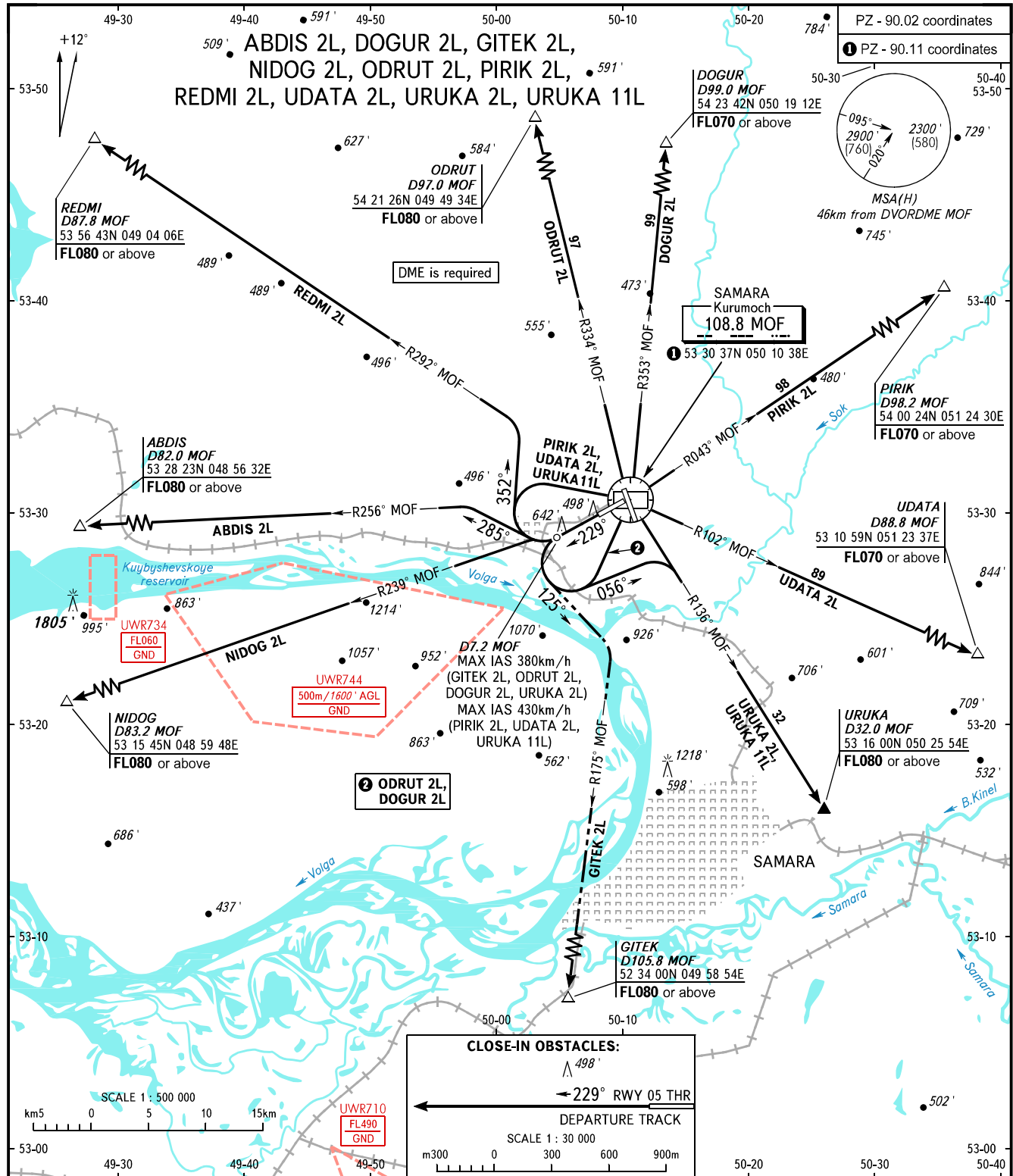


STANDARD DEPARTURE CHART
INSTRUMENT (SID) - ICAO

TRANSITION ALT: 4000'
TRANSITION HGT: (1095)

SAMARA, RUSSIA
KURUMOCH
RWY 23



TOWER	118.200	WARNING: 1. There are close-in obstacles. 2. MNM climb gradient: - 4.8% up to 900' due to obstacles, then 4.8% up to FL060 due to the airspace structure for ABDIS 2L; - 4.9% up to 900' due to obstacles, then 4.9% up to FL060 due to the airspace structure for NIDOG 2L; - 3.9% up to 900' due to obstacles for DOGUR 2L; - 4.1% up to 900' due to obstacles, then 4.1% up to FL060 due to the airspace structure for GITEK 2L; - 3.9% up to 900' due to obstacles for ODRUT 2L; - 3.9% up to 900' due to obstacles for PIRIK 2L; - 3.9% up to 900' due to obstacles for REDMI 2L; - 3.9% up to 900' due to obstacles for UDATA 2L; - 5.0% up to 900' due to obstacles, then 5.0% up to FL080 due to the airspace structure for URUKA 2L; - 3.9% up to 900' due to obstacles, then 3.9% up to FL080 due to the airspace structure for URUKA 11L. 3. SID GITEK 2L requires permission to overfly UWR710 (during activity) or ATS unit coordination.
RADAR	128.000	
APPROACH	130.800	
Alt set: -QNH(QFE on req); -hPa(mm on req).		
BEARINGS AND TRACKS ARE MAGNETIC ALTITUDES AND ELEVATIONS IN FEET HEIGHTS IN METRES DISTANCES IN KILOMETRES		