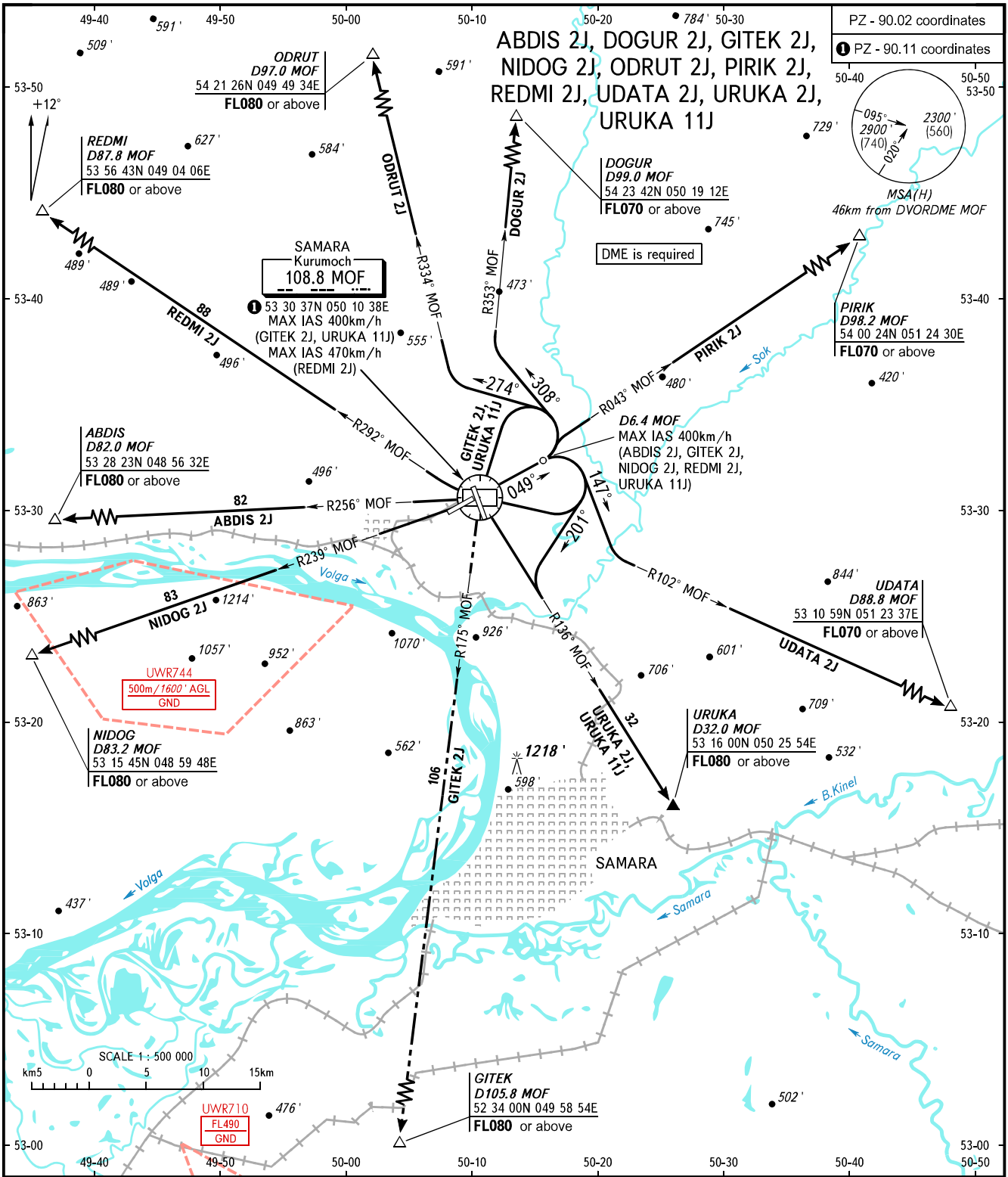


STANDARD DEPARTURE CHART  
INSTRUMENT (SID) - ICAO

TRANSITION ALT: 4000'  
TRANSITION HGT: (1075)

SAMARA, RUSSIA  
KURUMOCH  
RWY 05



TOWER	118.200	<b>WARNING:</b> 1. MNM climb gradient due to the airspace structure: - 4.4% up to 4400' for ABDIS 2J; - 4.4% up to 3400' for GITEK 2J; - 4.4% up to 4400' for NIDOG 2J; - 3.7% up to FL050 for PIRIK 2J; - 6.1% up to FL060 for UDATA 2J; - 5.1% up to FL080 for URUKA 2J; - 3.8% up to FL080 for URUKA 11J. 2. SID GITEK 2J requires permission to overfly UWR710 (during activity) or ATS unit coordination.
RADAR	128.000	
APPROACH	130.800	
BEARINGS AND TRACKS ARE MAGNETIC ALTITUDES AND ELEVATIONS IN FEET HEIGHTS IN METRES DISTANCES IN KILOMETRES		Alt set: -QNH(QFE on req); -hPa(mm on req).

CHANGE: New chart