

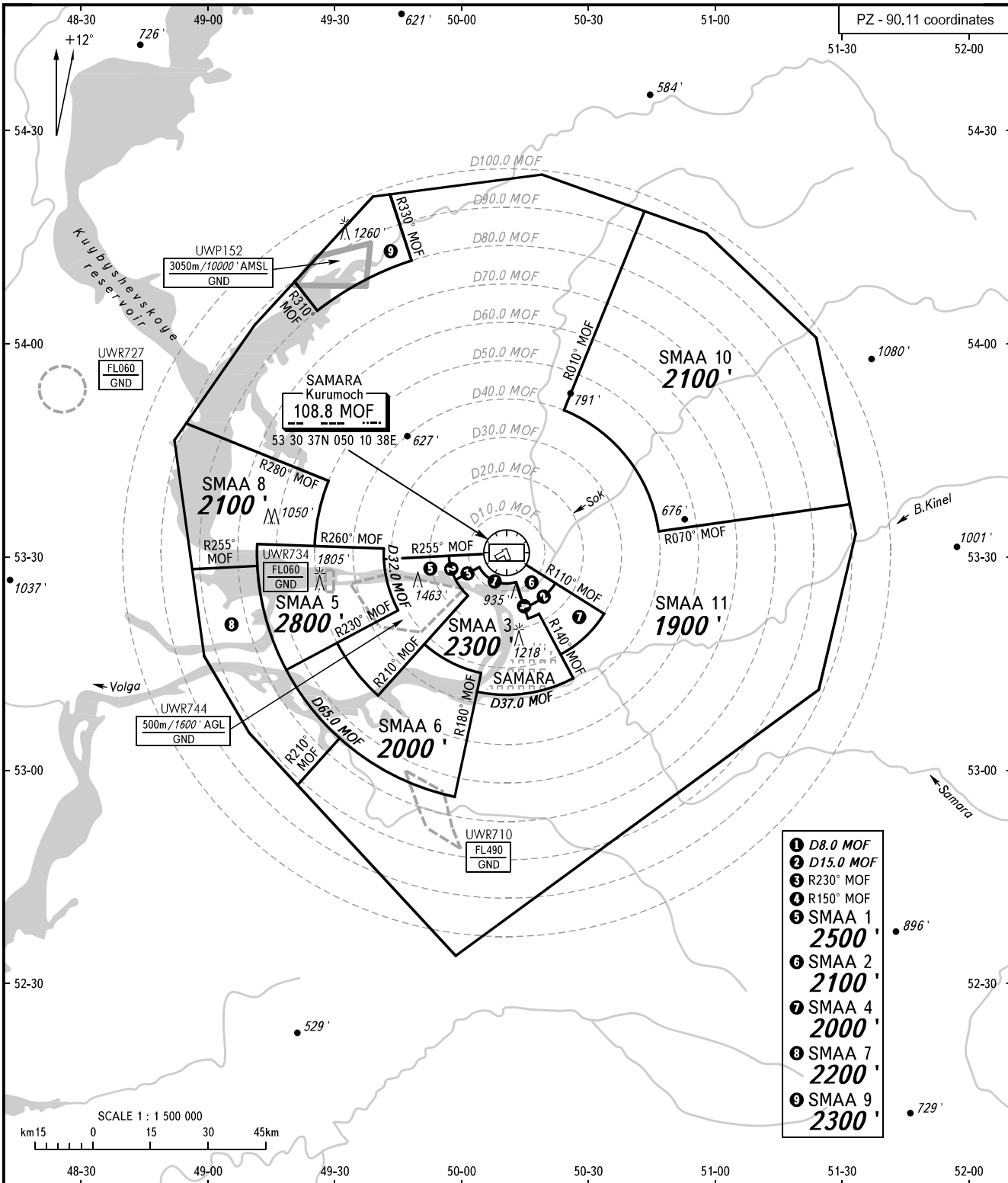
ATC SURVEILLANCE MINIMUM  
ALTITUDE CHART - ICAO

ELEV  
477'

TRANSITION ALT: 4000'  
TRANSITION HGT: (1075)

SAMARA, RUSSIA

KURUMOCH



APPROACH RADAR 130.800  
128.000

**WARNING:**

1. The chart may only be used for cross-checking of altitudes assigned while the aircraft is identified under radar control.
  2. TEMPERATURE CORRECTION: The altitude value of SMAA is calculated for ISA conditions (15°C). When ACFT is vectored at temperature 0°C or below, altimeter temperature correction must be applied to the minimum vectoring altitudes.
- COMMUNICATION FAILURE: In accordance with the procedures described in AIP. SMAA coordinates are on reverse side of this page.

BEARINGS AND TRACKS ARE MAGNETIC  
ALTITUDES AND ELEVATIONS IN FEET  
DISTANCES IN KILOMETRES

Alt set: -QNH(QFE on req);  
-hPa(mm on req).

**SAMARA, RUSSIA**  
**KURUMOCH**

SURVEILLANCE MINIMUM ALTITUDE AREAS		
IDENT	MNM ALT	LATERAL LIMITS (PZ-90.11 coordinates)
1	2	3
SMAA 1	2500 ft	533010N 0495705E - 532939N 0494143E, then counterclockwise by arc of a circle radius of 32 KM centred at 533037N 0501038E to 532228N 0494509E - 531750N 0493053E, then counterclockwise by arc of a circle radius of 50 KM centred at 533037N 0501038E to 531030N 0494036E - 532435N 0500134E, then clockwise by arc of a circle radius of 15 KM centred at 533037N 0501038E to 533010N 0495705E.
SMAA 2	2100 ft	532619N 0502207E, then clockwise by arc of a circle radius of 15 KM centred at 533037N 0501038E to 532255N 0501449E - 532630N 0501252E, then clockwise by arc of a circle radius of 8 KM centred at 533037N 0501038E to 532835N 0500415E - 532648N 0495840E, then clockwise by arc of a circle radius of 15 KM centred at 533037N 0501038E to 533010N 0495705E - 533036N 0501038E - 532619N 0502207E.
SMAA 3	2300 ft	532835N 0500415E - 532648N 0495840E, then counterclockwise by arc of a circle radius of 15 KM centred at 533037N 0501038E to 532435N 0500134E - 531745N 0495121E, then counterclockwise by arc of a circle radius of 32 KM centred at 533037N 0501038E to 531343N 0500439E - 531105N 0500343E, then counterclockwise by arc of a circle radius of 37 KM centred at 533037N 0501038E to 531258N 0502614E - 532202N 0501815E, then clockwise by arc of a circle radius of 18 KM centred at 533037N 0501038E to 532122N 0501539E - 532630N 0501252E, then clockwise by arc of a circle radius of 8 KM centred at 533037N 0501038E to 532835N 0500415E.
SMAA 4	2000 ft	532619N 0502207E, then clockwise by arc of a circle radius of 15 KM centred at 533037N 0501038E to 532255N 0501449E - 532122N 0501539E, then counterclockwise by arc of a circle radius of 18 KM centred at 533037N 0501038E to 532202N 0501815E - 531619N 0502318E, then counterclockwise by arc of a circle radius of 30 KM centred at 533037N 0501038E to 532200N 0503334E - 532619N 0502207E.
SMAA 5	2800 ft	533109N 0494141E - 533135N 0491150E, then counterclockwise by arc of a circle radius of 65 KM centred at 533037N 0501038E to 531358N 0491903E - 532228N 0494509E, then clockwise by arc of a circle radius of 32 KM centred at 533037N 0501038E - 533109N 0494141E.
SMAA 6	2000 ft	531750N 0493053E - 531358N 0491903E, then counterclockwise by arc of a circle radius of 65 KM centred at 533037N 0501038E to 525618N 0495834E - 531343N 0500439E, then clockwise by arc of a circle radius of 32 KM centred at 533037N 0501038E to 531745N 0495121E - 531030N 0494036E, then clockwise by arc of a circle radius of 50 KM centred at 533037N 0501038E to 531750N 0493053E.
SMAA 7	2200 ft	532832N 0491157E - 532755N 0485642E, then along Samara/Kurumoch TMA boundary to 525750N 0492200E - 530427N 0493141E, then clockwise by arc of a circle radius of 65 KM centred at 533037N 0501038E to 532832N 0491157E.
SMAA 8	2100 ft	534035N 0492831E - 534823N 0485436E, then along Samara/Kurumoch TMA boundary to 532755N 0485642E - 532832N 0491157E, then clockwise by arc of a circle radius of 65 KM centred at 533037N 0501038E to 533135N 0491150E - 533124N 0492525E, then clockwise by arc of a circle radius of 50 KM centred at 533037N 0501038E - 534035N 0492831E.
SMAA 9	2300 ft	541136N 0494754E - 542053N 0494238E, then along Samara/Kurumoch TMA boundary to 540831N 0491957E - 540428N 0492528E, then clockwise by arc of a circle radius of 80 KM centred at 533037N 0501038E to 541136N 0494754E.
SMAA 10	2100 ft	541829N 0504346E - 535036N 0502418E, then clockwise by arc of a circle radius of 40 KM centred at 533037N 0501038E to 533331N 0504631E - 533656N 0513143E, then along Samara/Kurumoch TMA boundary to 541829N 0504346E.
SMAA 11	1900 ft	534823N 0485436E - 534035N 0492831E, then counterclockwise by arc of a circle radius of 50 KM centred at 533037N 0501038E to 533124N 0492525E - 533109N 0494141E, then counterclockwise by arc of a circle radius of 32 KM centred at 533037N 0501038E to 532939N 0494143E - 533037N 0501038E - 532200N 0503334E, then clockwise by arc of a circle radius of 30 KM centred at 533037N 0501038E to 531619N 0502318E - 531258N 0502614E, then clockwise by arc of a circle radius of 37 KM centred at 533037N 0501038E to 53105N 0500343E - 525618N 0495834E, then clockwise by arc of a circle radius of 65 KM centred at 533037N 0501038E to 530427N 0493141E - 525750N 0492200E, then along Samara/Kurumoch TMA boundary to 533656N 0513143E - 533331N 0504631E, then counterclockwise by arc of a circle radius of 40 KM centred at 533037N 0501038E to 535036N 0502418E - 541829N 0504346E, then along Samara/Kurumoch TMA boundary to 542053N 0494238E - 541136N 0494754E, then counterclockwise by arc of a circle radius of 80 KM centred at 533037N 0501038E to 540428N 0492528E - 540831N 0491957E - 534823N 0485436E.