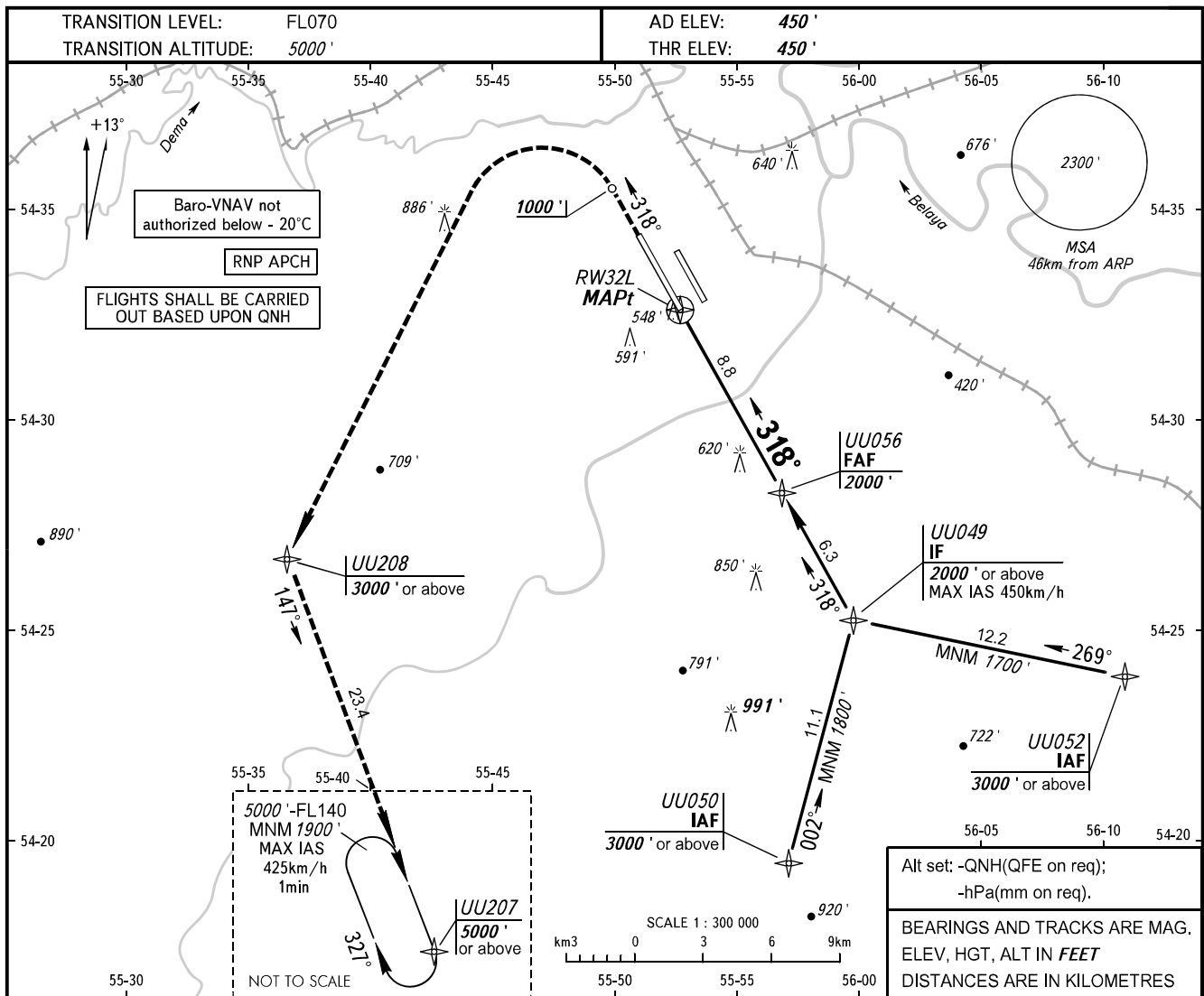


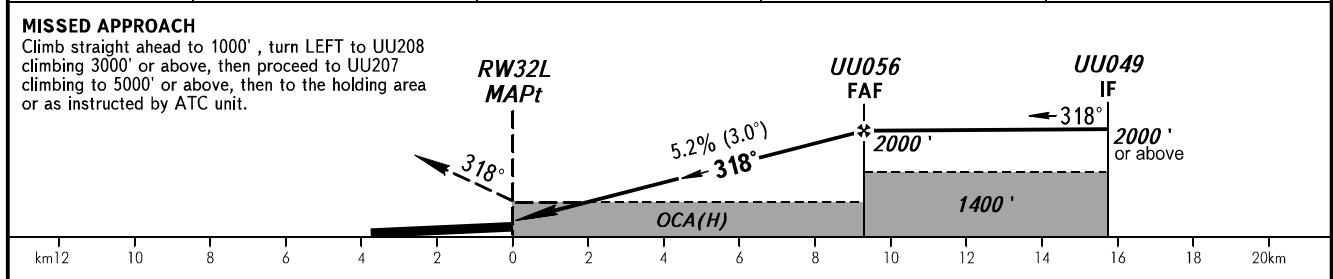
**INSTRUMENT
APPROACH
CHART - ICAO**

RADAR **120.900**

UFA, RUSSIA
UFA
RNAV (GNSS) RWY 32L



DIST to RW32L	2	4	6	8
ALT 3.0° APCH	840'	1190'	1530'	1870'



OCA(H)		A	B	C	D							
Straight-in	LNAV	870' (420')	870' (420')	870' (420')	870' (420')							
	LNAV/VNAV	710' (260')	730' (280')	740' (290')	750' (300')							
Approach												
Circling		890' (440')	950' (510')	1050' (600')	1260' (810')							
GROUND SPEED	km/h	150	180	210	240	270	300	330	360	390	420	450
RATE OF DESCENT	m/s	2.2	2.6	3.0	3.5	3.9	4.3	4.8	5.2	5.6	6.1	6.5

WARNING:
1. MAPt at RW32L. Timing not authorized.
2. Flying birds can be expected in take-off, landing areas and on final approach segment.