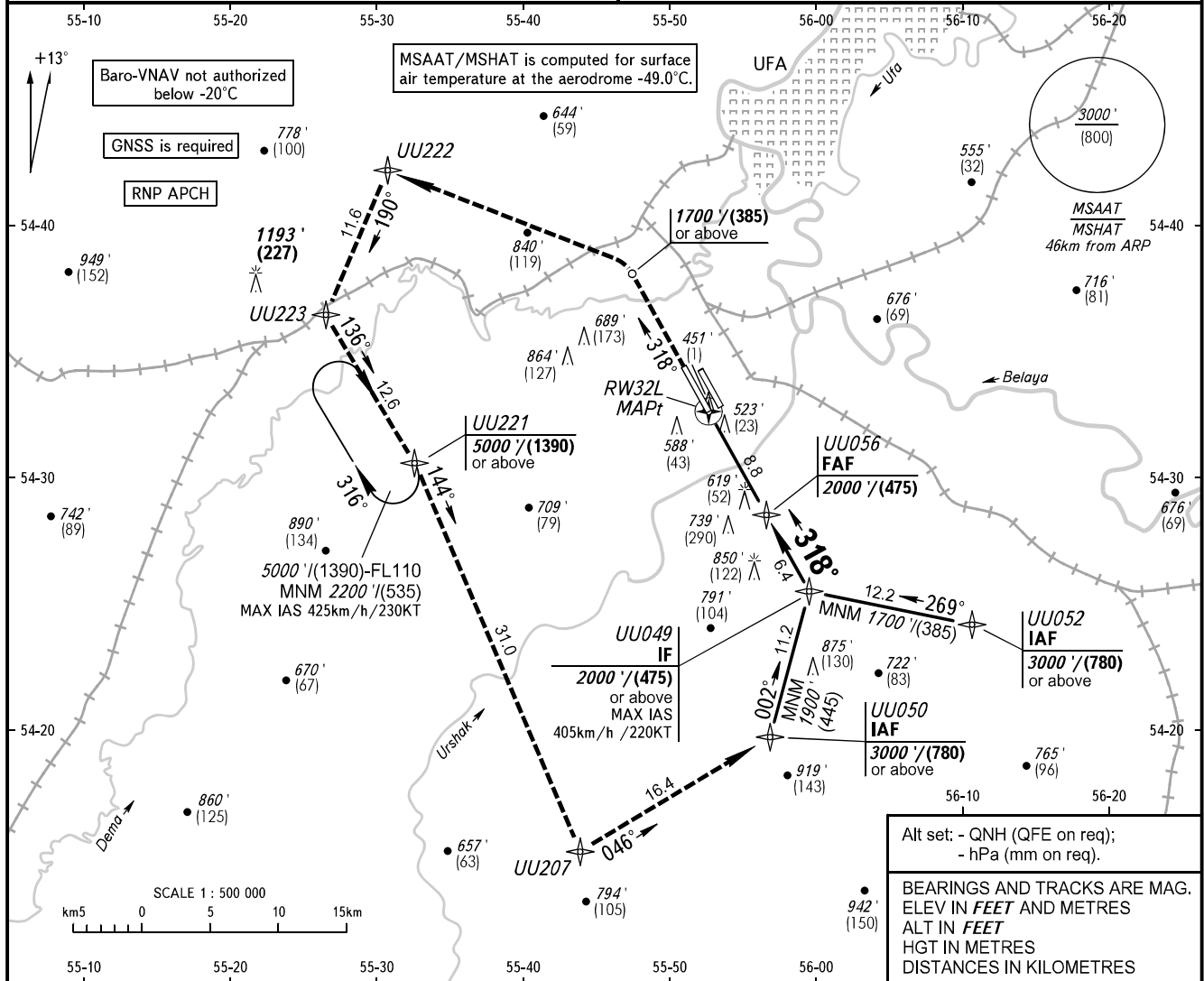


**INSTRUMENT
APPROACH
CHART - ICAO**

RADAR **120.900**

UFA, RUSSIA
UFA
RNP RWY 32L

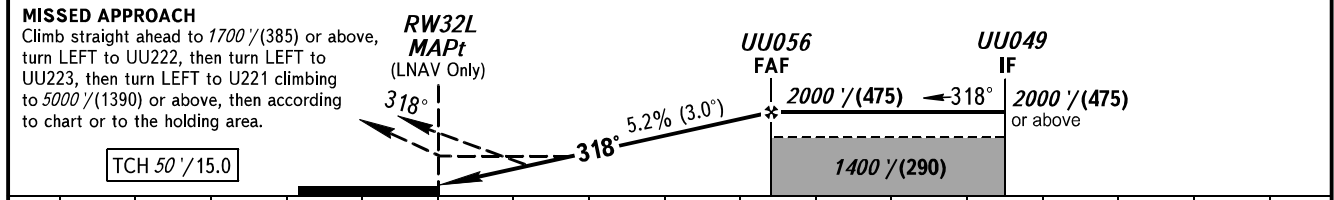
TRANSITION LEVEL: FL070 TRANSITION ALT: 5000' AD ELEV: 450' / 137m
TRANSITION HGT: (1410) THR ELEV: 450' / 137.0m



Alt set: - QNH (QFE on req);
- hPa (mm on req).

BEARINGS AND TRACKS ARE MAG.
ELEV IN FEET AND METRES
ALT IN FEET
HGT IN METRES
DISTANCES IN KILOMETRES

DIST to RW32L	2.0	4.0	6.0	8.0
ALTITUDE/HEIGHT	850' / (125)	1200' / (230)	1540' / (335)	1890' / (440)



OCA(H)		A	B	C	D					
Straight-in Approach	LNAV	870' (420') (130)	870' (420') (130)	870' (420') (130)	870' (420') (130)					
	LNAV/VNAV	710' (260') (80)	730' (280') (85)	740' (290') (90)	750' (300') (95)					
Circling		890' (440') (135)	950' (500') (155)	1090' (640') (195)	1260' (810') (250)					
GROUND SPEED	km/h	150	180	210	240	270	300	330	360	390
	kt	81	97	113	130	146	162	178	194	211
RATE OF DESCENT	m/s	2.2	2.6	3.0	3.5	3.9	4.3	4.8	5.2	5.6
	ft/min	427	512	597	682	768	853	938	1024	1109

WARNING:
1. Flying birds can be expected in take-off, landing areas and on final approach segment.
2. MAPt at RW32L. Timing not authorized.