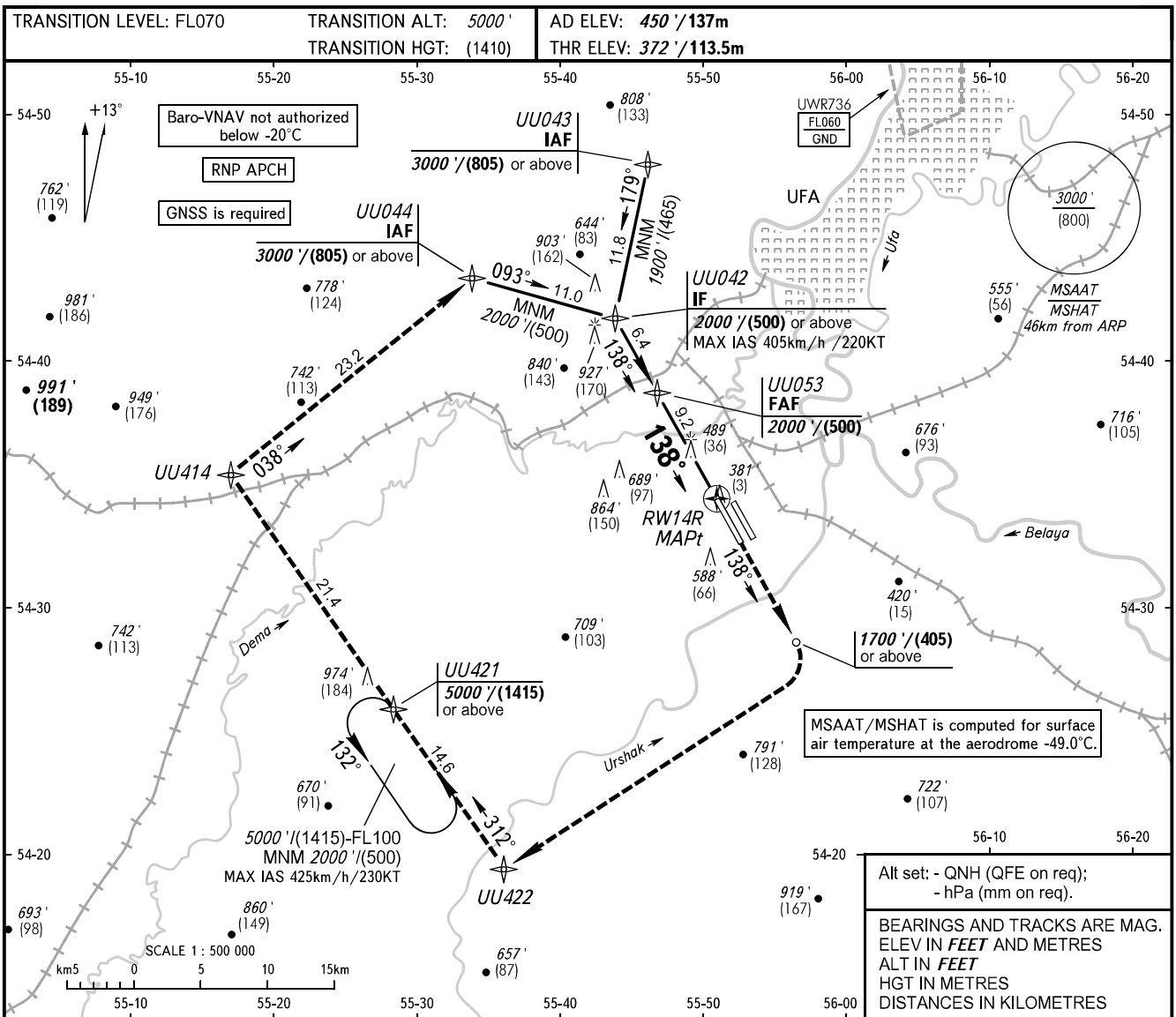


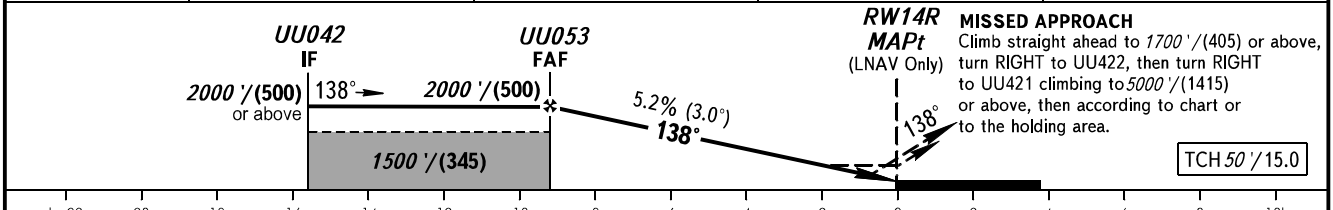
**INSTRUMENT
APPROACH
CHART - ICAO**

RADAR **120.900**

UFA, RUSSIA
UFA
RNP RWY 14R



DIST to RW14R	8.0	6.0	4.0	2.0
ALTITUDE/HEIGHT	1810' / (440)	1470' / (335)	1120' / (230)	780' / (125)



OCA(H)		A	B	C	D					
Straight-in Approach	LNAV	740' (368') (113)	740' (368') (113)	740' (368') (113)	740' (368') (113)					
	LNAV/VNAV	610' (238') (73)	620' (248') (76)	620' (248') (76)	640' (268') (82)					
Circling		890' (440') (135)	950' (500') (155)	1090' (640') (195)	1260' (810') (250)					
GROUND SPEED	km/h	150	180	210	240	270	300	330	360	390
	kt	81	97	113	130	146	162	178	194	211
RATE OF DESCENT	m/s	2.2	2.6	3.0	3.5	3.9	4.3	4.8	5.2	5.6
	ft/min	427	512	597	682	768	853	938	1024	1109

WARNING:
1. MAPt at RW14R. Timing not authorized.
2. Flying birds can be expected in take-off, landing areas and on final approach segment.

CHANGE: UWWR736