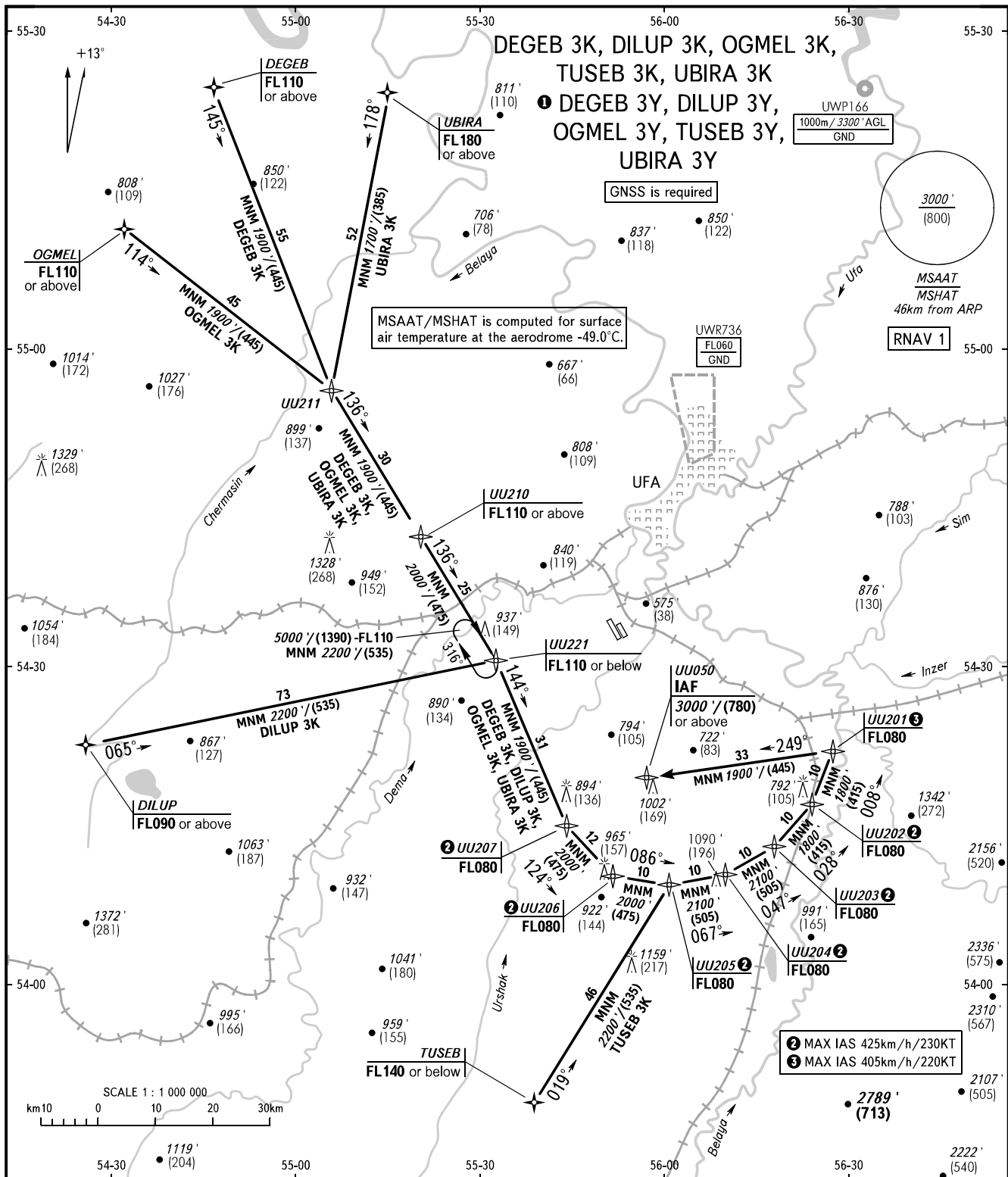


STANDARD ARRIVAL CHART  
INSTRUMENT (STAR) - ICAO

TRANSITION  
LEVEL : FL070

UFA, RUSSIA  
UFA  
RNAV RWY 32L



APPROACH RADAR **126.000**  
**120.900**

**WARNING**  
Flying birds can be expected in take-off, landing areas and on final approach segment.

BEARINGS AND TRACKS ARE MAGNETIC  
ALTITUDES IN FEET  
ELEVATIONS IN FEET AND METRES  
HEIGHTS IN METRES  
DISTANCES IN KILOMETRES

Alt set: - QNH (QFE on req);  
- hPa (mm on req).

- ①** STAR are only designated for calculation of fuel to destination:
- DEGEB 3Y** DEGEB [FL110+] - UU211 - UU210 [FL110+] - UU221 [FL110+] - UU207 [FL080] - UU050 [3000' +/- (780)+]
  - DILUP 3Y** DILUP [FL090+] - UU221 [FL110+] - UU207 [FL080] - UU050 [3000' +/- (780)+]
  - OGMEL 3Y** OGMEL [FL110+] - UU211 - UU210 [FL110+] - UU221 [FL110+] - UU207 [FL080] - UU050 [3000' +/- (780)+]
  - TUSEB 3Y** TUSEB [FL080-FL090] - UU205 [FL080] - UU050 [3000' +/- (780)+]
  - UBIRA 3Y** UBIRA [FL180+] - UU211 - UU210 [FL110+] - UU221 [FL110+] - UU207 [FL080] - UU050 [3000' +/- (780)+]
- ②** MAX IAS 425km/h/230KT  
**③** MAX IAS 405km/h/220KT

CHANGE: UWR736