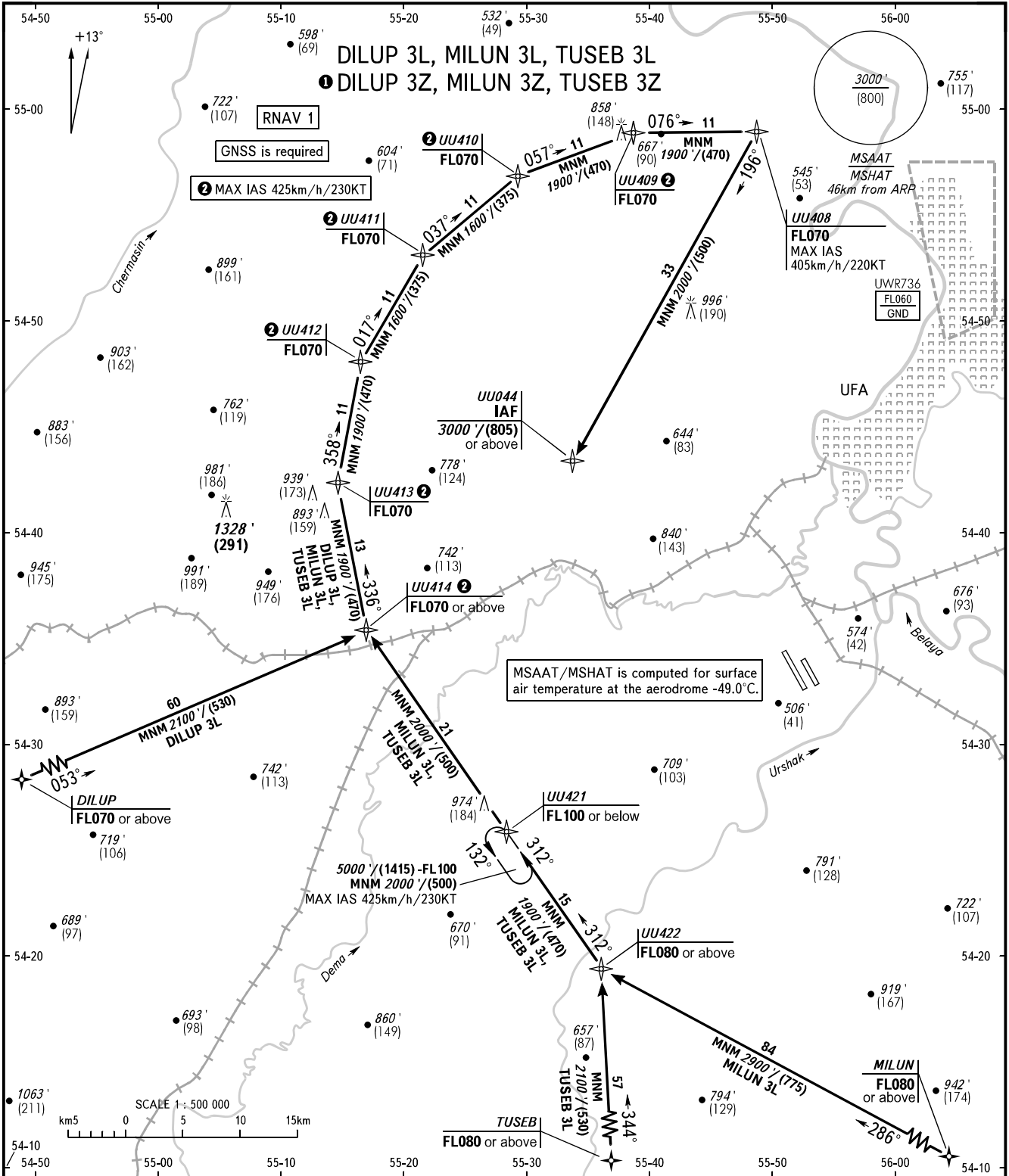


STANDARD ARRIVAL CHART  
INSTRUMENT (STAR) - ICAO

TRANSITION  
LEVEL: FL070

UFA, RUSSIA  
UFA  
RNAV RWY 14R



APPROACH RADAR 126.000  
120.900

**WARNING**  
Flying birds can be expected in take-off, landing areas and on final approach segment.

**① STAR are only designated for calculation of fuel to destination:**  
**DILUP 3Z** DILUP [FL090+] - UUA414 [FL070]-  
- UUA044 [3000' +/(805)+]  
**MILUN 3Z** MILUN [FL090+] - UUA222 [FL080+] -  
- UUA044 [3000' +/(805)+]  
**TUSEB 3Z** TUSEB [FL080+] - UUA222 [FL080+] -  
- UUA044 [3000' +/(805)+]

BEARINGS AND TRACKS ARE MAGNETIC  
ALTITUDES IN FEET  
ELEVATIONS IN FEET AND METRES  
HEIGHTS IN METRES  
DISTANCES IN KILOMETRES

Alt set: - QNH (QFE on req);  
- hPa (mm on req).