

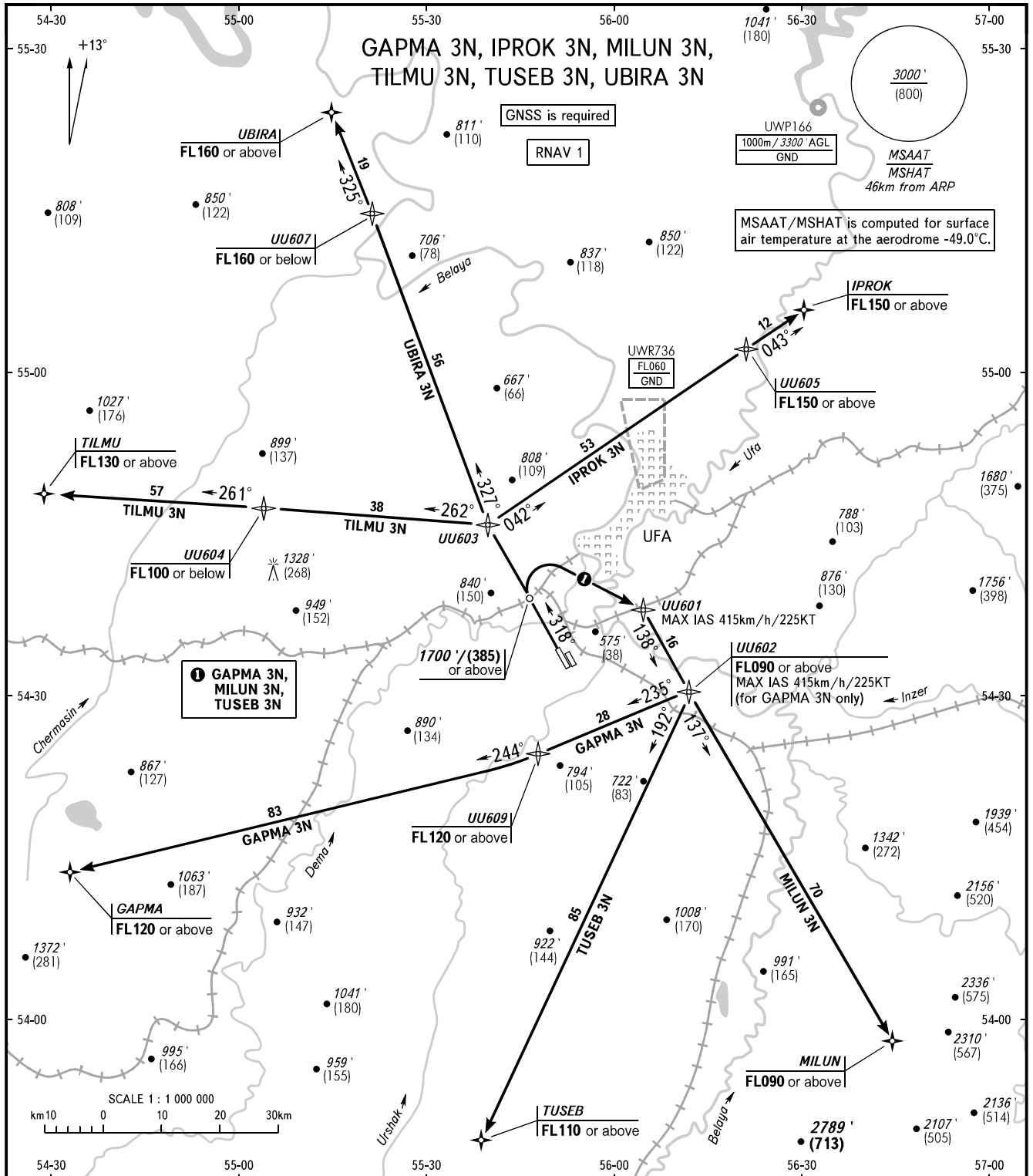
STANDARD DEPARTURE CHART  
INSTRUMENT (SID) - ICAO

TRANSITION ALTITUDE : 5000'  
TRANSITION HEIGHT : (1410)

UFA, RUSSIA

UFA

RNAV RWY 32L



RADAR 120.900  
APPROACH 126.000

**WARNING:**  
1. Turn before DER is PROHIBITED.  
2. Flying birds can be expected in take-off, landing areas and on final approach segment.

The minimum climb gradients due to the airspace structure:  
- 4.8% up to FL090 for GAPMA 3N;  
- 5.8% up to FL150 for IPROK 3N;  
- 4.8% up to FL090 for MILUN 3N;  
- 4.8% up to FL090 for TUSEB 3N;  
- 4.9% up to FL160 for UBIRA 3N.

BEARINGS AND TRACKS ARE MAGNETIC  
ALTITUDES IN FEET  
ELEVATIONS IN FEET AND METRES  
HEIGHTS IN METRES  
DISTANCES IN KILOMETRES

Alt set: - QNH (QFE on req);  
- hPa (mm on req).