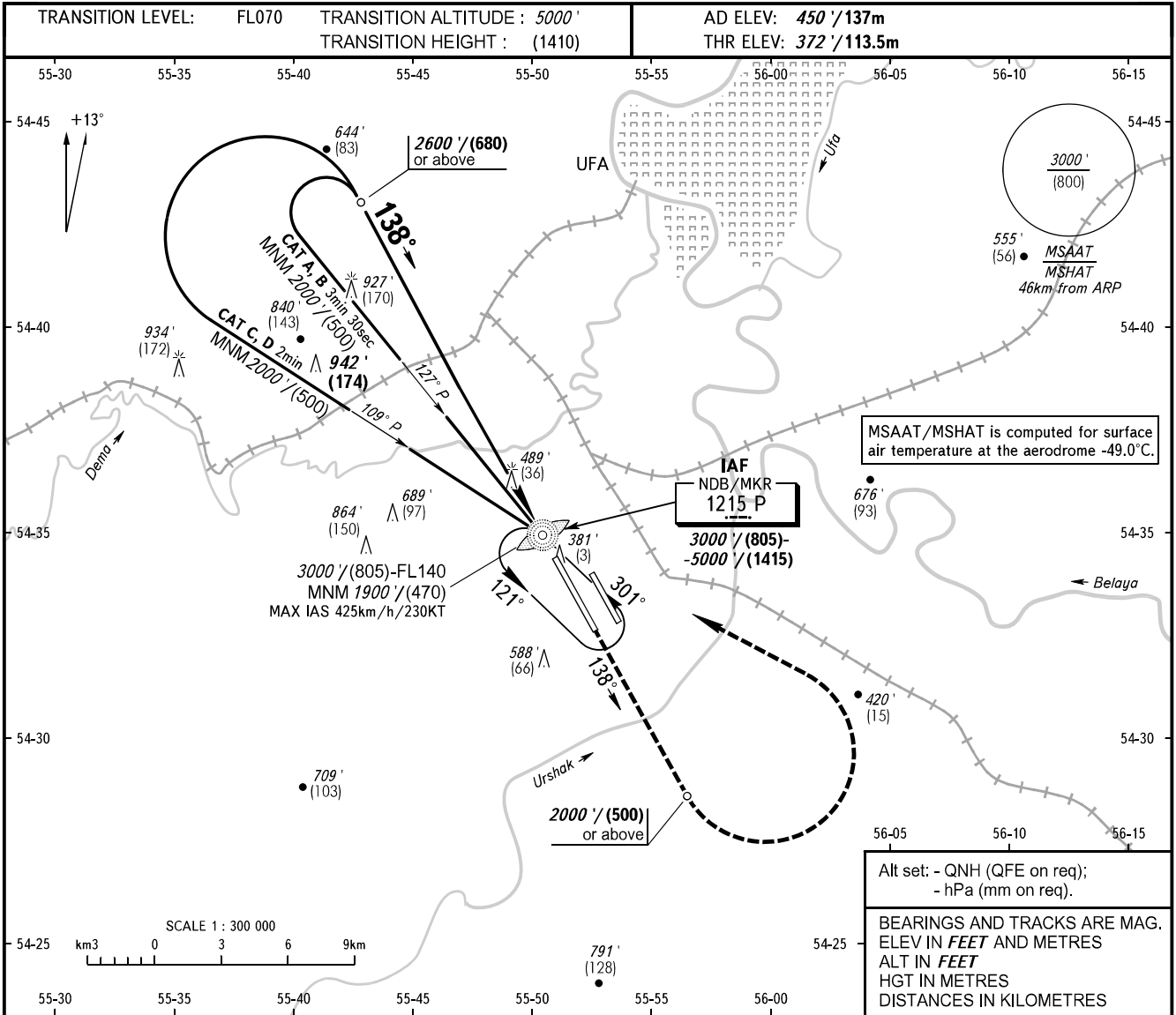


**INSTRUMENT  
APPROACH  
CHART - ICAO**

RADAR 120.900

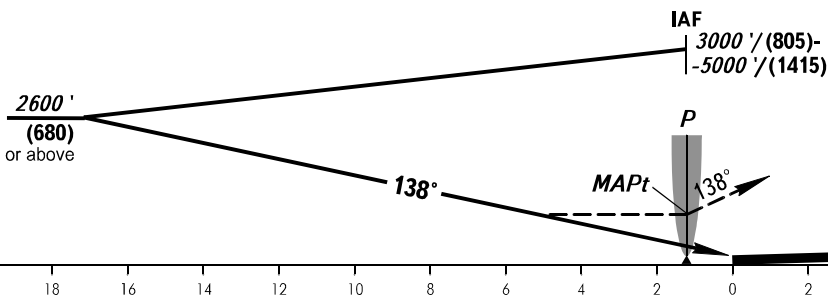
**UFA, RUSSIA**  
UFA  
NDB Y RWY 14R



Alt set: - QNH (QFE on req);  
- hPa (mm on req).

BEARINGS AND TRACKS ARE MAG.  
ELEV IN FEET AND METRES  
ALT IN FEET  
HGT IN METRES  
DISTANCES IN KILOMETRES

**MISSED APPROACH**  
Climb straight ahead to  
2000'/(500) or above, turn LEFT  
to NDB/MKR P, then by ATC.



OCA(H)		A	B	C	D
Straight-in	Approach	1230' (858') (265)	1230' (858') (265)	1230' (858') (265)	1230' (858') (265)
	Circling	1230' (780') (240)	1230' (780') (240)	1230' (780') (240)	1310' (860') (265)

**WARNING**  
Flying birds can be expected in take-off,  
landing areas and on final approach segment.

CHANGE: UWR736 withdrawn