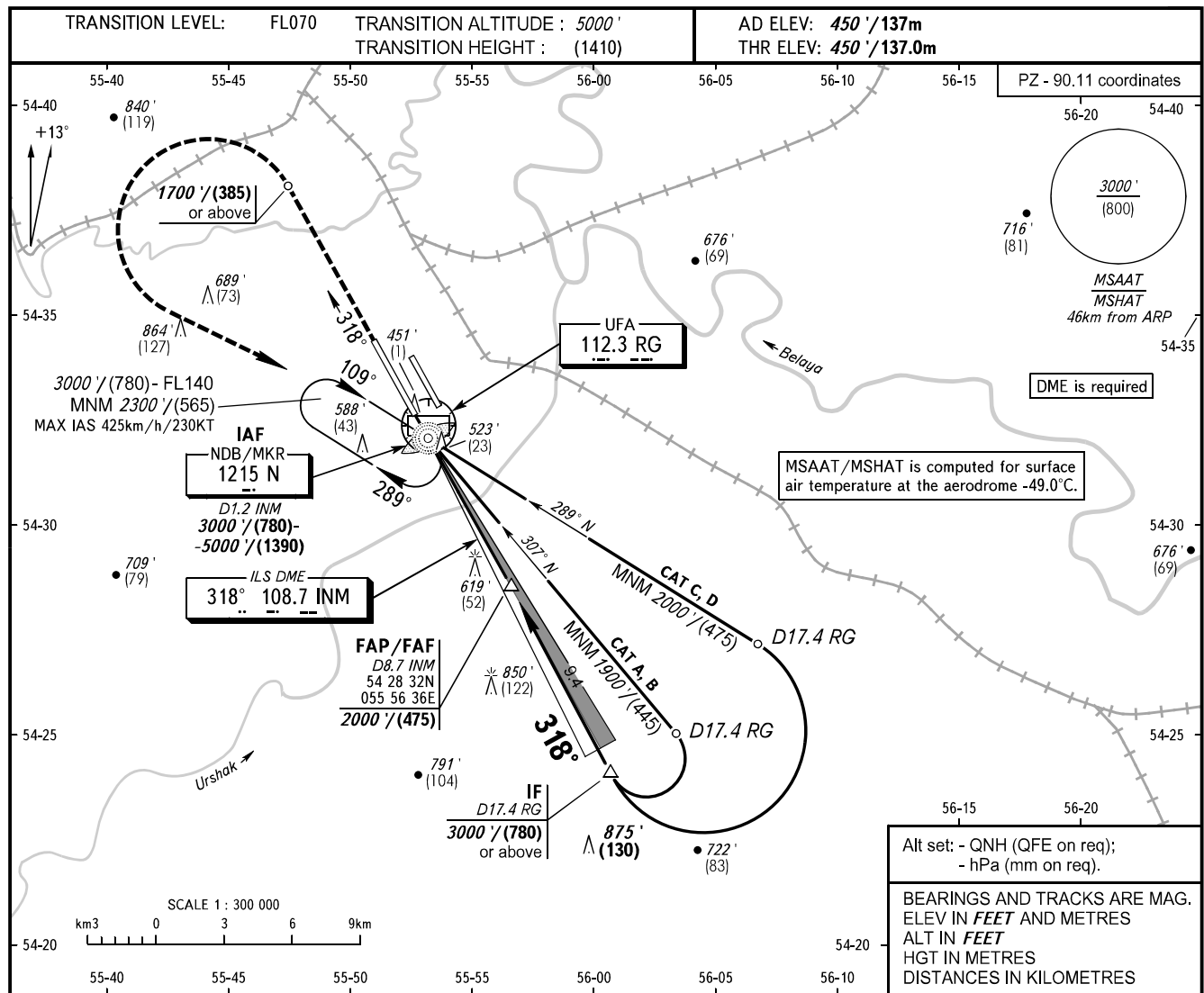


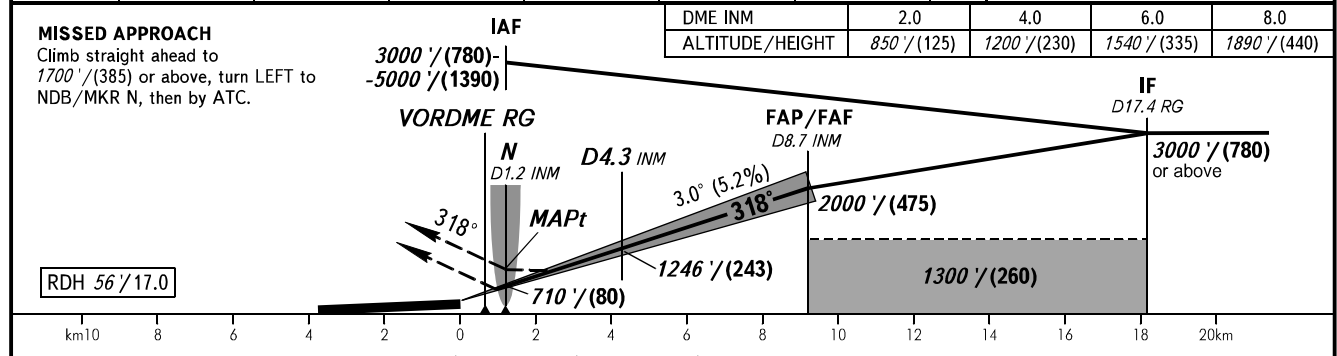
**INSTRUMENT
APPROACH
CHART - ICAO**

RADAR 120.900

UFA, RUSSIA
UFA
ILS X CAT I/II, LOC X RWY 32L



Alt set: - QNH (QFE on req);
- hPa (mm on req).
BEARINGS AND TRACKS ARE MAG.
ELEV IN FEET AND METRES
ALT IN FEET
HGT IN METRES
DISTANCES IN KILOMETRES



OCA(H)		A	B	C	D
Straight-in Approach	CAT I	609' (159') (49)	621' (171') (53)	630' (180') (55)	640' (190') (58)
	CAT II	515' (65') (20)	532' (82') (25)	550' (100') (31)	565' (115') (35)
	LOC	810' (360') (110)	810' (360') (110)	810' (360') (110)	810' (360') (110)
Circling		890' (440') (135)	950' (500') (155)	1090' (640') (195)	1260' (810') (250)

WARNING:
1. Flying birds can be expected in take-off, landing areas and on final approach segment.
2. ILS DME INM reads zero at RWY 32L THR.
3. MAPt at NDB/MKR N. Timing not authorized for defining MAPt.

GROUND SPEED	km/h	150	180	210	240	270	300	330	360	390
	kt	81	97	113	130	146	162	178	194	211
RATE OF DESCENT	m/s	2.2	2.6	3.0	3.5	3.9	4.3	4.8	5.2	5.6
	ft/min	427	512	597	682	768	853	938	1024	1109