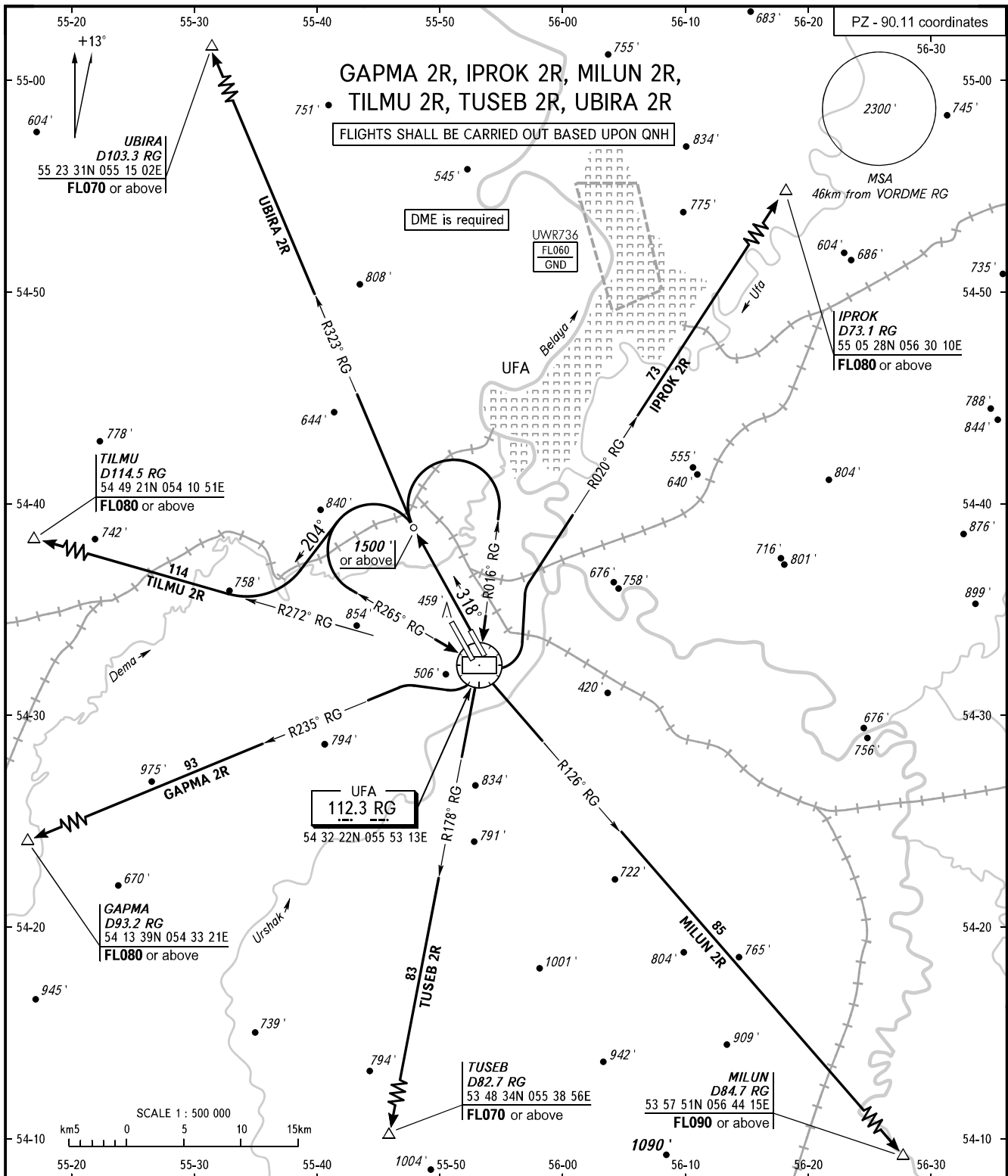


STANDARD DEPARTURE CHART
INSTRUMENT (SID) - ICAO

TRANSITION
ALTITUDE : 5000'

UFA, RUSSIA
UFA
RWY 32R



RADAR APPROACH
120.900
126.000

CLOSE-IN OBSTACLES
 459'
 NOT TO SCALE

- WARNING:**
1. Turn before DER is PROHIBITED.
 2. SID IPROK 2R: MNM climb gradient is 4.4% up to FL070 due airspace structure.
 3. Flying birds can be expected in take-off, landing areas and on final approach segment.

BEARINGS AND TRACKS ARE MAGNETIC
 ALTITUDES AND ELEVATIONS ARE IN FEET
 DISTANCES ARE IN KILOMETRES