

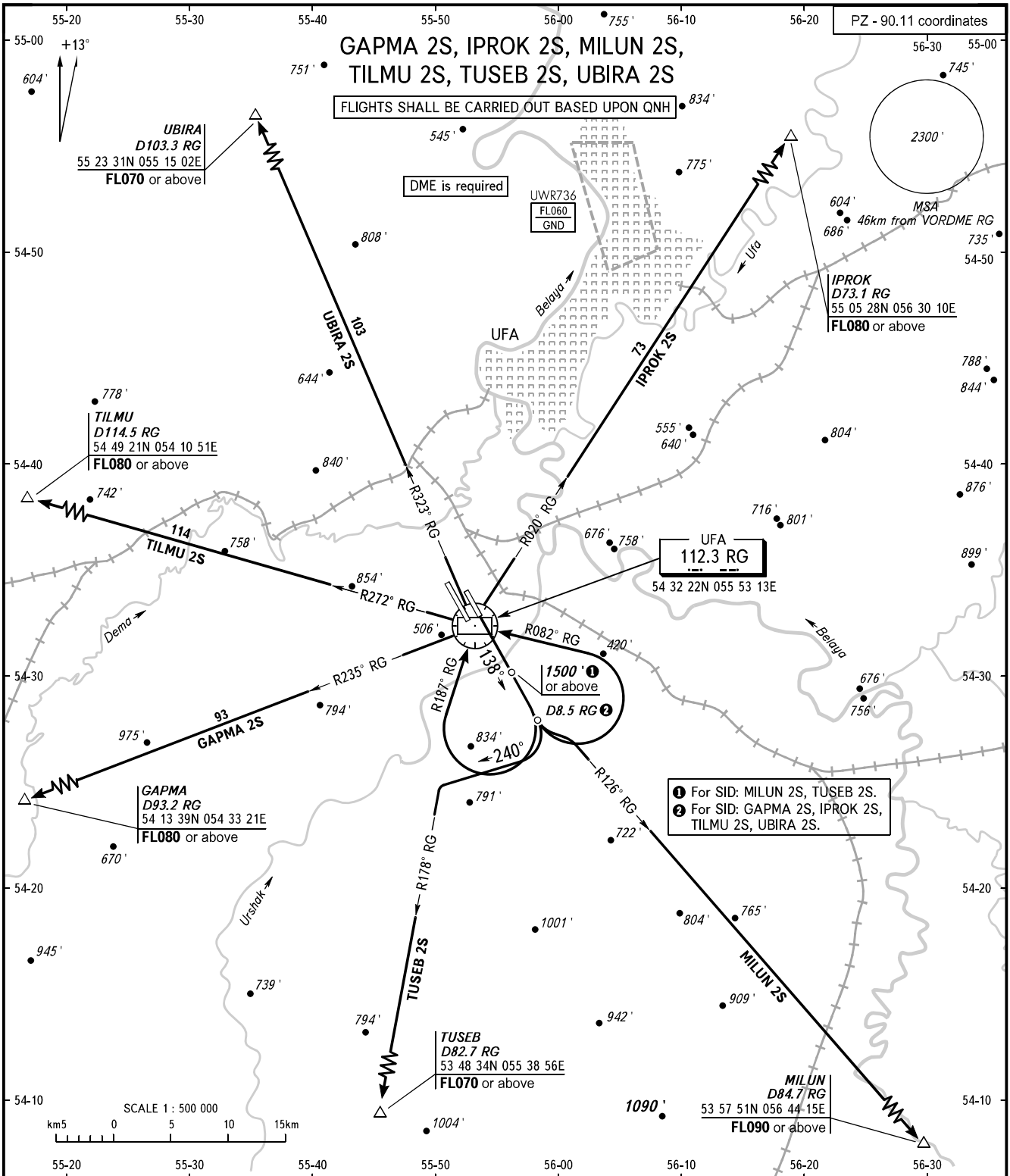
STANDARD DEPARTURE CHART
INSTRUMENT (SID) - ICAO

TRANSITION
ALTITUDE : 5000'

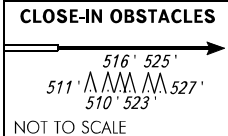
UFA, RUSSIA

UFA

RWY 14L



RADAR APPROACH 120.900
 126.000



WARNING:

1. Turn before DER is PROHIBITED.
2. Flying birds can be expected in take-off, landing areas and on final approach segment.
3. SID IPROK 2S: MNM climb gradient is 3.8% up to FL070 due to the airspace structure.

BEARINGS AND TRACKS ARE MAGNETIC
 ALTITUDES AND ELEVATIONS ARE IN FEET
 DISTANCES ARE IN KILOMETRES