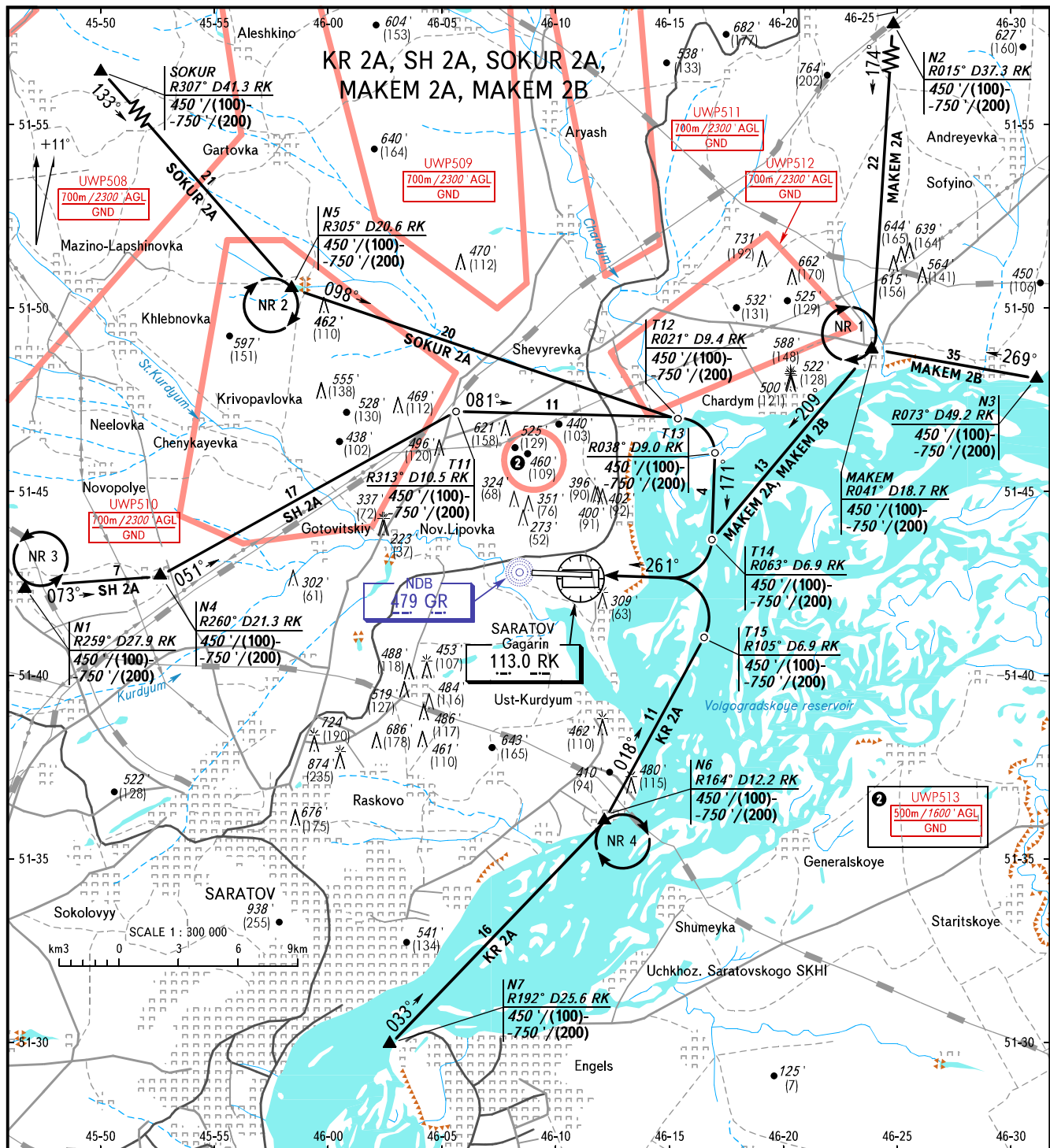


VFR
ARRIVAL
CHART

SARATOV, RUSSIA
GAGARIN
RWY 26

TRANSITION
LEVEL : 1



GAGARIN APPROACH 121.625
 GAGARIN RADAR 130.300
 GAGARIN TOWER 122.850

- 1 TRANSITION LEVEL:
- FL040 when QNH is 1013 hPa (760mm mercury column) or above;
 - FL050 when QNH is 977 hPa (733mm mercury column) or above, but less than 1013 hPa (760mm mercury column);
 - FL060 when QNH is less than 977 hPa (733mm mercury column).

- NR 1 Holding altitude for one-way traffic is by ATC instruction, RIGHT turns.
- NR 2 Holding altitude is by ATC instruction, RIGHT turns.
- NR 3 Holding altitude is by ATC instruction, LEFT turns.
- NR 4 Holding altitude is by ATC instruction, RIGHT turns.

WARNING
 Altitudes below the transition level shall be assigned by ATS unit and maintained by the flight crew in feet based upon QNH in hectopascals (hPa). QFE value is issued by Radar controller (Gagarin-Radar) on flight crew's request. Flight crews of ACFT not equipped for maintaining the altitude in feet or based upon hPa must have conversion tables which allow to carry out the controller's instruction to maintain altitude.

BEARINGS AND TRACKS ARE MAGNETIC
 ALTITUDES IN FEET
 HEIGHTS IN METRES
 ELEVATIONS IN FEET AND METRES
 DISTANCES IN KILOMETRES

Alt set: -QNH(QFE on req);
 -hPa(mm on req).