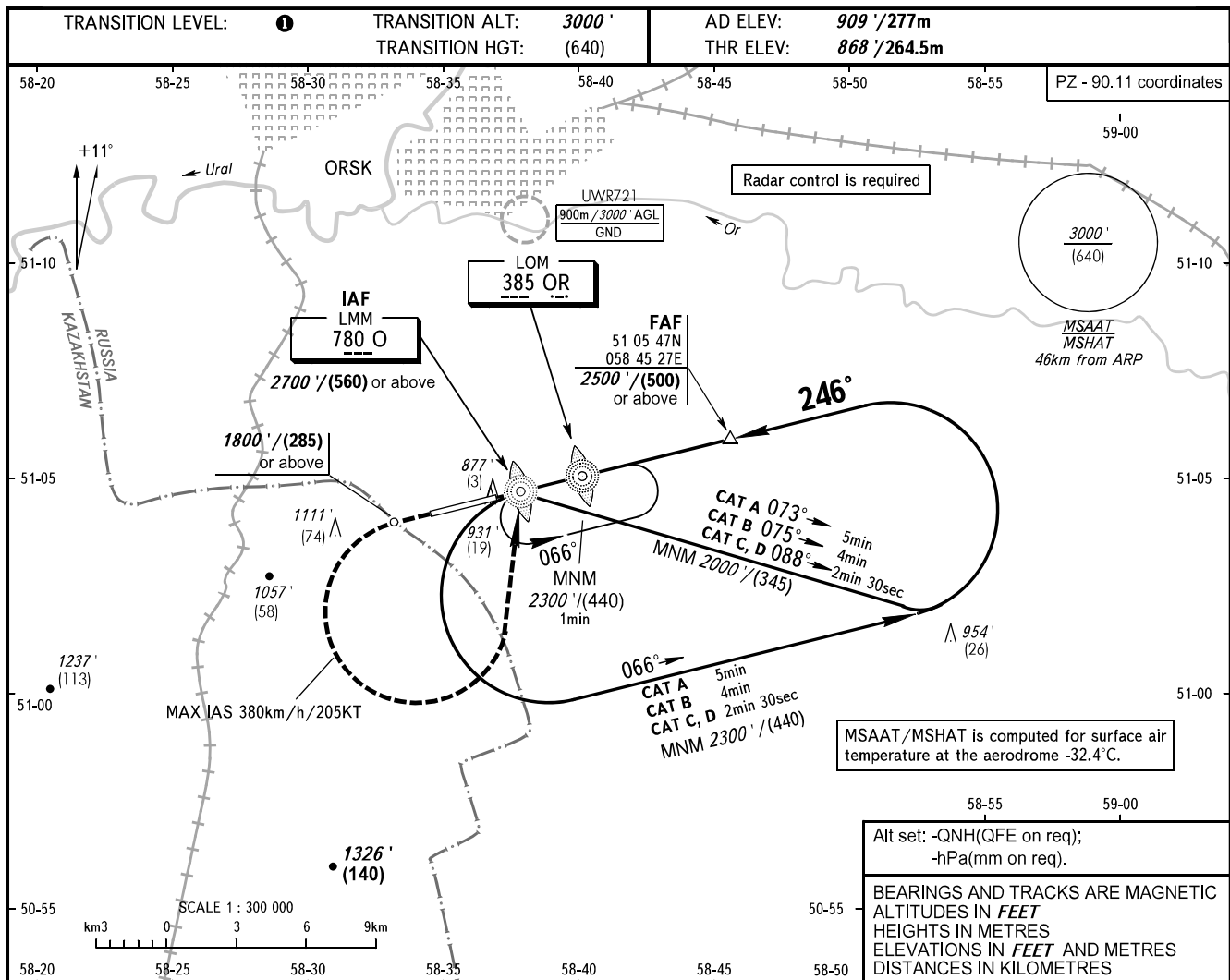


**INSTRUMENT
APPROACH
CHART - ICAO**

ORSK, RUSSIA
ORSK
NDB X RWY 25

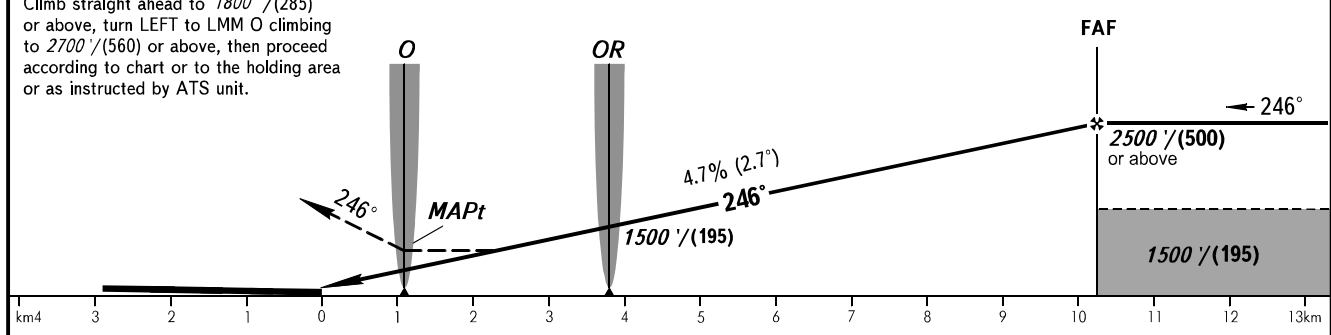
TOWER **122.700**



MISSED APPROACH

Climb straight ahead to 1800' / (285) or above, turn LEFT to LMM O climbing to 2700' / (560) or above, then proceed according to chart or to the holding area or as instructed by ATS unit.

FAF fixed by TAR (DIST 11.7)



OCA(H)		A	B	C	D											
Straight-in Approach		1130' (260') (80)	1130' (260') (80)	1130' (260') (80)	1130' (260') (80)	TRANSITION LEVEL: - FL040 when QNH is 1013 hPa (760mm mercury column) or above; - FL050 when QNH is 977 hPa (733mm mercury column) or above, but less than 1013 hPa (760mm mercury column); - FL060 when QNH is less than 977 hPa (733mm mercury column). NOTE: 1. MAPt at LMM O. Timing not authorized for defining MAPt. 2. Turn before passing MAPt is PROHIBITED.										
Circling		1310' (400') (125)	1410' (500') (155)	1630' (720') (220)	1660' (750') (230)											
GROUND SPEED		km/h	150	180	210	240	270	300	330	360	390	420	450			
RATE OF DESCENT		m/s	2.0	2.4	2.7	3.1	3.5	3.9	4.3	4.7	5.1	5.5	5.9			
		ft/min	385	463	540	617	694	771	848	925	1002	1079	1156			