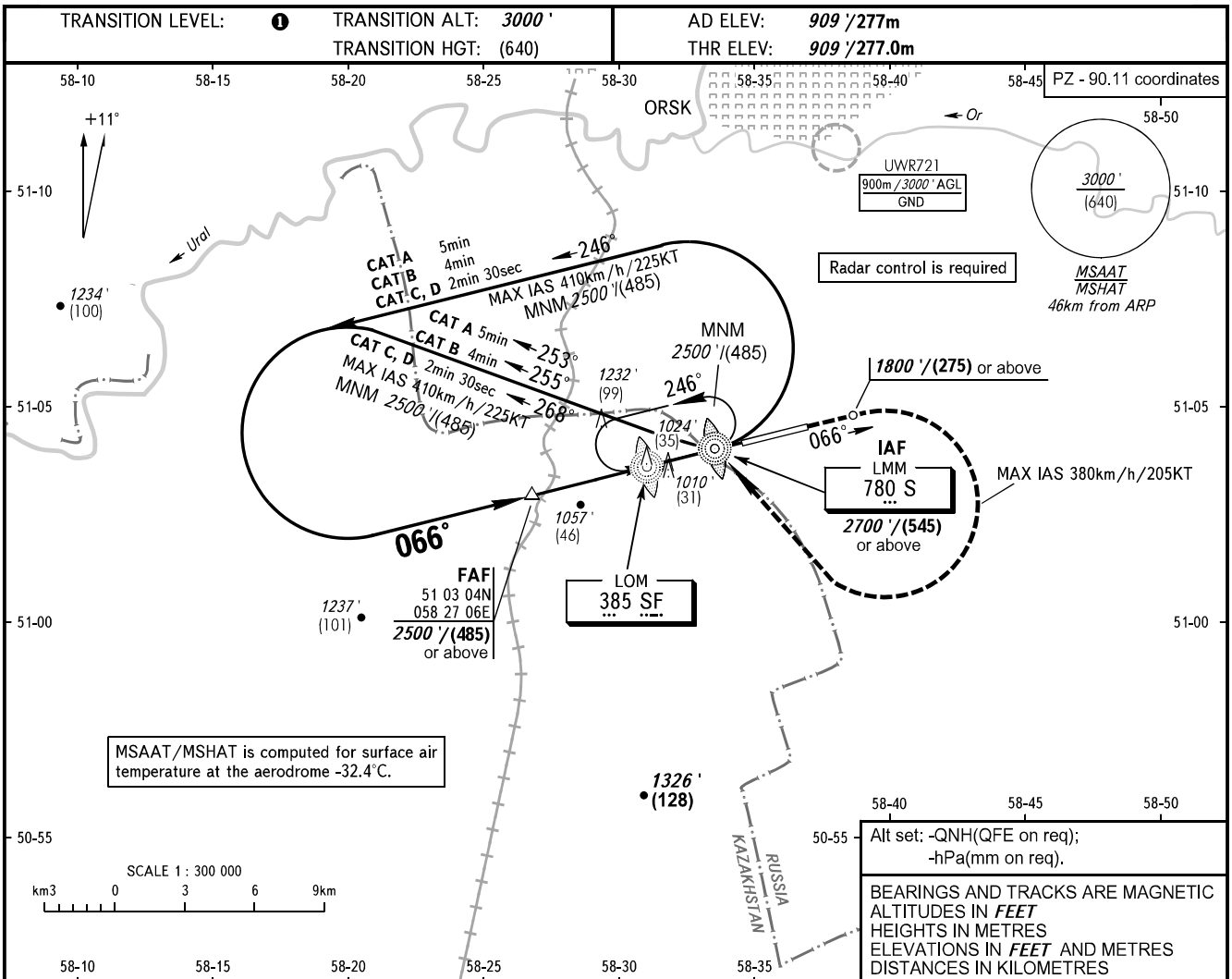


**INSTRUMENT
APPROACH
CHART - ICAO**

TOWER 122.700

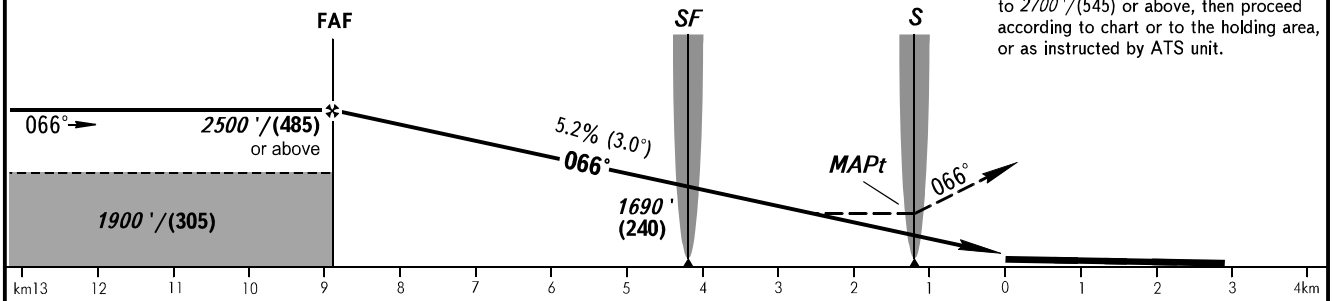
ORSK, RUSSIA
ORSK
NDB X RWY 07



FAF fixed by TAR (DIST 10.4)

MISSED APPROACH

Climb straight ahead to 1800' / (275) or above, turn RIGHT to LMM S climbing to 2700' / (545) or above, then proceed according to chart or to the holding area, or as instructed by ATS unit.



OCA(H)		A	B	C	D
Straight-in	Approach	1410' (510') (155)	1410' (510') (155)	1410' (510') (155)	1410' (510') (155)
	Circling	1410' (510') (155)	1410' (510') (155)	1630' (720') (220)	1660' (750') (230)

① TRANSITION LEVEL:
- FL040 when QNH is 1013 hPa (760mm mercury column) or above;
- FL050 when QNH is 977 hPa (733mm mercury column) or above, but less than 1013 hPa (760mm mercury column);
- FL060 when QNH is less than 977 hPa (733mm mercury column).

NOTE:
1. MAPt at LMM S. Timing not authorized for defining MAPt.
2. Turn before passing MAPt is PROHIBITED.

GROUND SPEED	km/h	150	180	210	240	270	300	330	360	390	420	450
	RATE OF DESCENT	m/s	2.2	2.6	3.0	3.5	3.9	4.3	4.8	5.2	5.6	6.1
	ft/min	427	512	597	682	768	853	938	1024	1109	1194	1280

CHANGE: NIL