

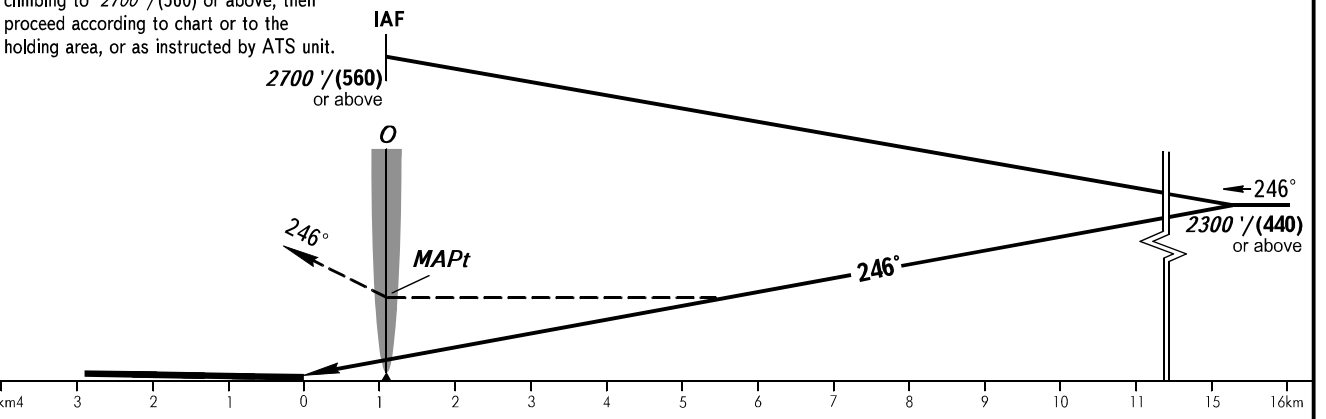
**INSTRUMENT
APPROACH
CHART - ICAO**

ORSK, RUSSIA
ORSK
NDB Y RWY 25

TOWER 122.700



MISSED APPROACH
Climb straight ahead to 1800'/(285) or above, turn LEFT to LMM O climbing to 2700'/(560) or above, then proceed according to chart or to the holding area, or as instructed by ATS unit.



OCA(H)		A	B	C	D
Straight-in Approach		1290' (420') (130)	1290' (420') (130)	1290' (420') (130)	1290' (420') (130)
Circling		1310' (400') (125)	1410' (500') (155)	1630' (720') (220)	1660' (750') (230)

1 TRANSITION LEVEL:
- FL040 when QNH is 1013 hPa (760mm mercury column) or above;
- FL050 when QNH is 977 hPa (733mm mercury column) or above, but less than 1013 hPa (760mm mercury column);
- FL060 when QNH is less than 977 hPa (733mm mercury column).

NOTE:
1. MAPt at LMM O. Timing not authorized for defining MAPt.
2. Turn before passing MAPt is PROHIBITED.

CHANGE: MNM