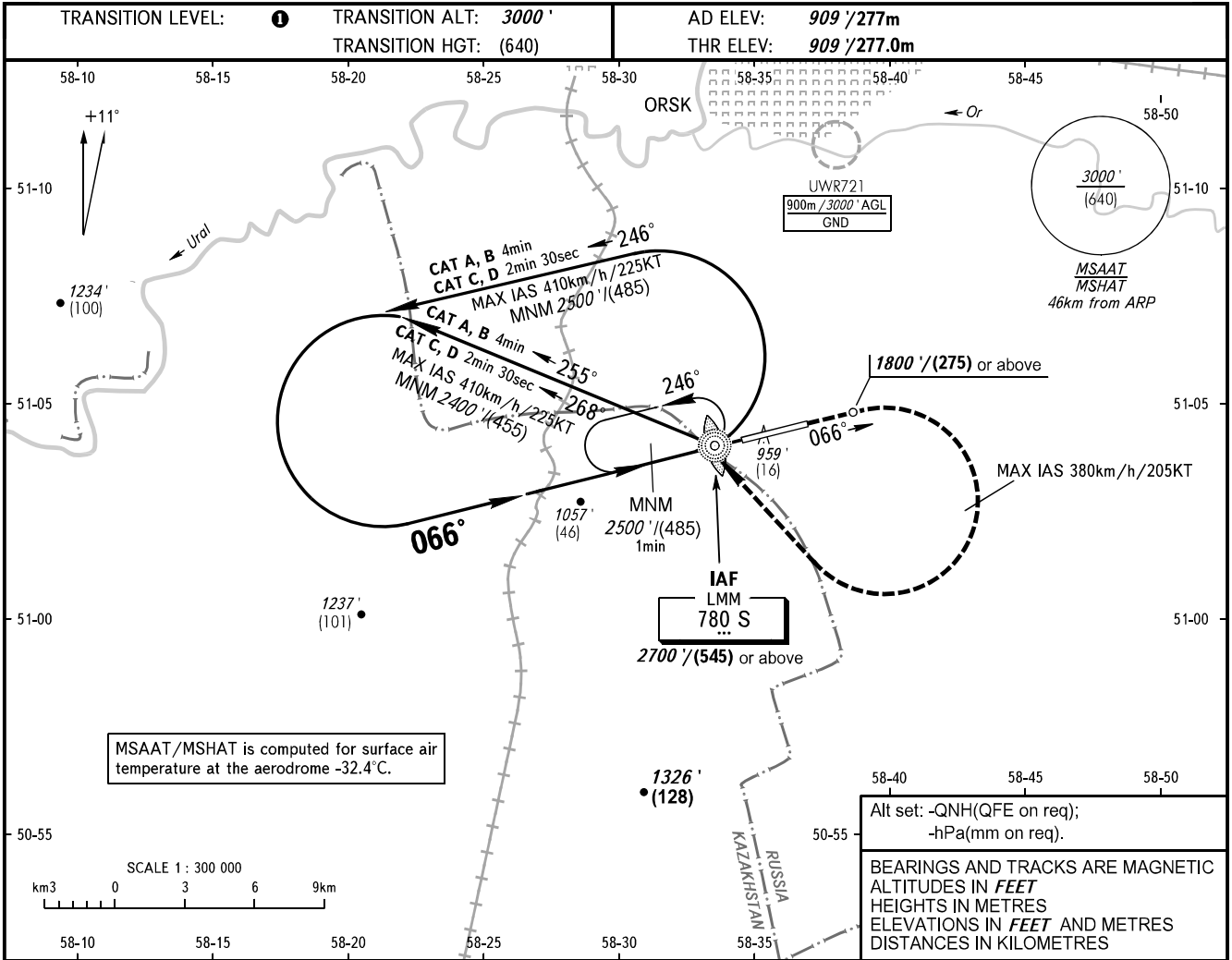


**INSTRUMENT
APPROACH
CHART - ICAO**

TOWER 122.700

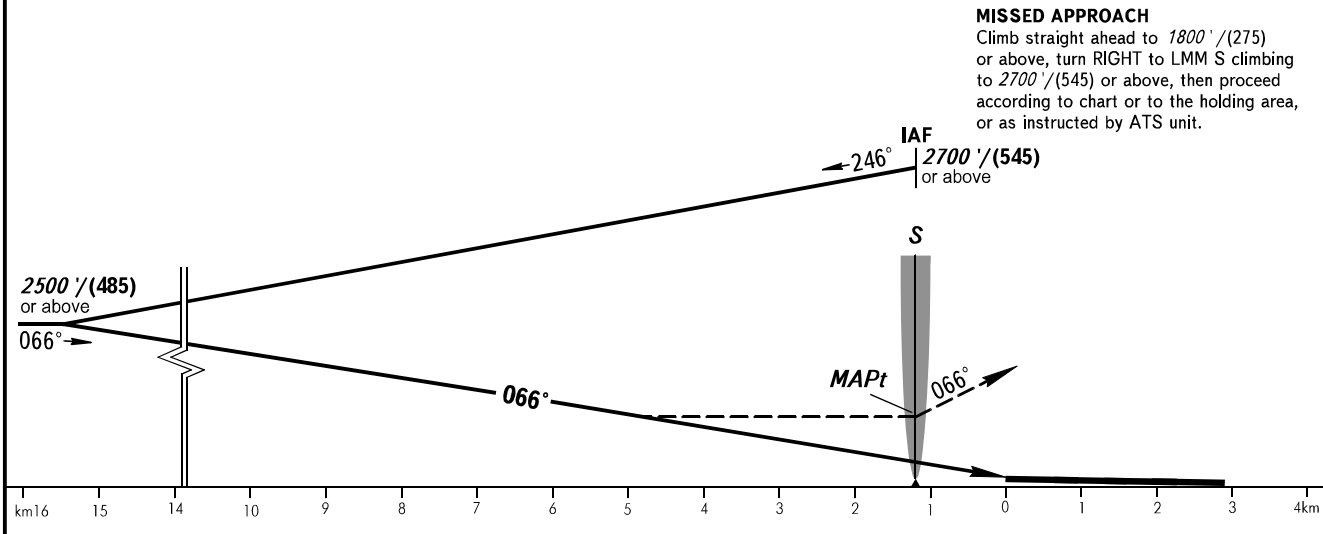
ORSK, RUSSIA
ORSK
NDB Y RWY 07



Alt set: -QNH(QFE on req);
-hPa(mm on req).

BEARINGS AND TRACKS ARE MAGNETIC
ALTITUDES IN FEET
HEIGHTS IN METRES
ELEVATIONS IN FEET AND METRES
DISTANCES IN KILOMETRES

MISSED APPROACH
Climb straight ahead to 1800' (275) or above, turn RIGHT to LMM S climbing to 2700' (545) or above, then proceed according to chart or to the holding area, or as instructed by ATS unit.



OCA(H)		A	B	C	D
Straight-in	Approach	1700' (800') (245)	1700' (800') (245)	1700' (800') (245)	1700' (800') (245)
	Circling	1700' (800') (245)	1700' (800') (245)	1700' (800') (245)	1700' (800') (245)

1 TRANSITION LEVEL:
- FL040 when QNH is 1013 hPa (760mm mercury column) or above;
- FL050 when QNH is 977 hPa (733mm mercury column) or above, but less than 1013 hPa (760mm mercury column);
- FL060 when QNH is less than 977 hPa (733mm mercury column).

MAPt at LMM S. Timing not authorized for defining MAPt.

CHANGE: NIL