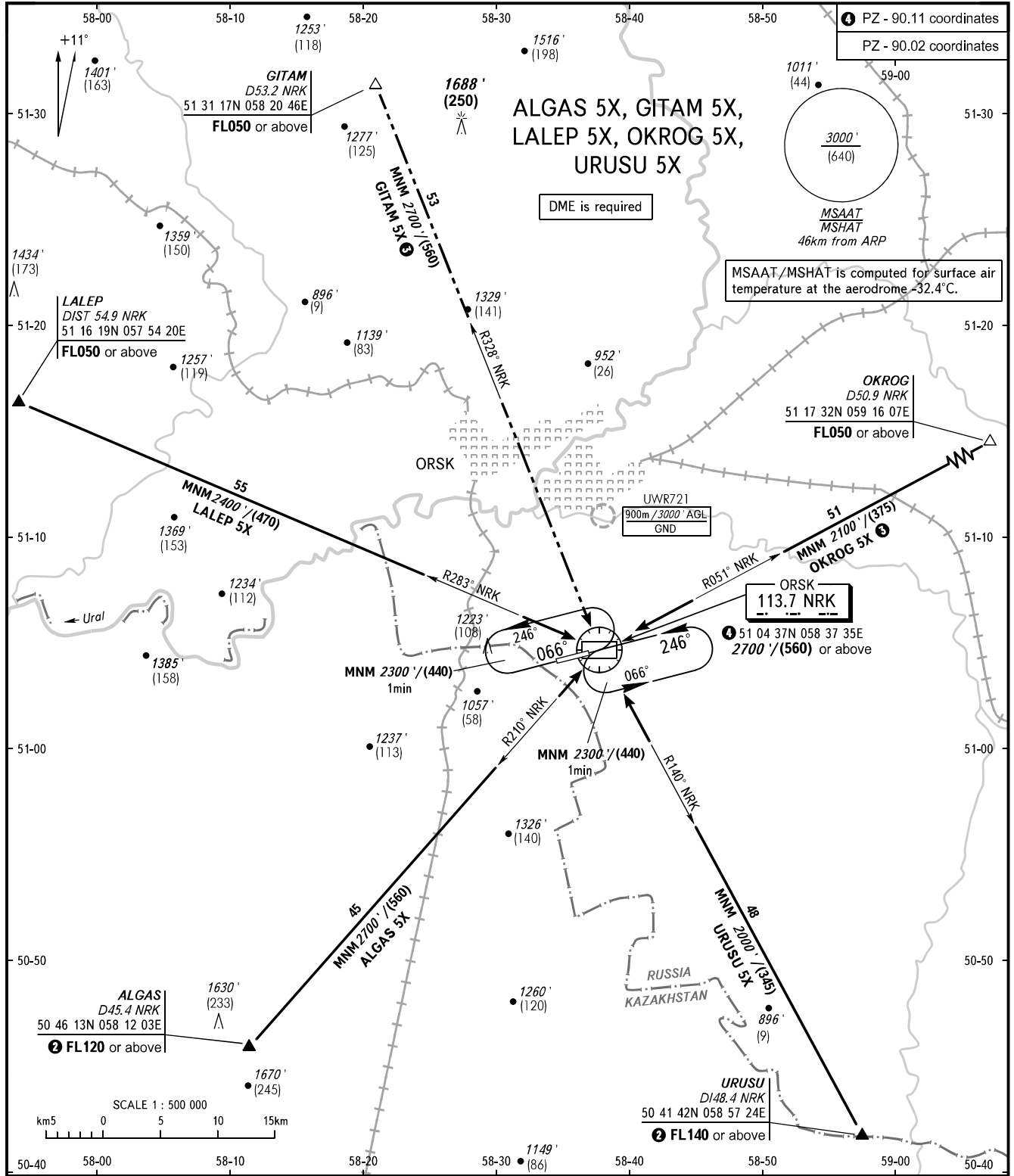


STANDARD ARRIVAL CHART
INSTRUMENT (STAR) - ICAO

ORSK, RUSSIA
ORSK
RWY 07/25

TRANSITION
LEVEL : ①



TOWER 122.700

- ① TRANSITION LEVEL:
- FL040 when QNH is 1013 hPa (760mm mercury column) or above;
 - FL050 when QNH is 977 hPa (733mm mercury column) or above, but less than 1013 hPa (760mm mercury column);
 - FL060 when QNH is less than 977 hPa (733mm mercury column).
- ② Lower flight levels are AVBL by coordination with ATS unit.
- ③ Flight levels (altitude) are AVBL by coordination with ATS unit.

BEARINGS AND TRACKS ARE MAGNETIC
ALTITUDES IN FEET
HEIGHTS IN METRES
ELEVATIONS IN FEET AND METRES
DISTANCES IN KILOMETRES

Alt set: -QNH(QFE on req);
-hPa(mm on req).

CHANGE: New chart