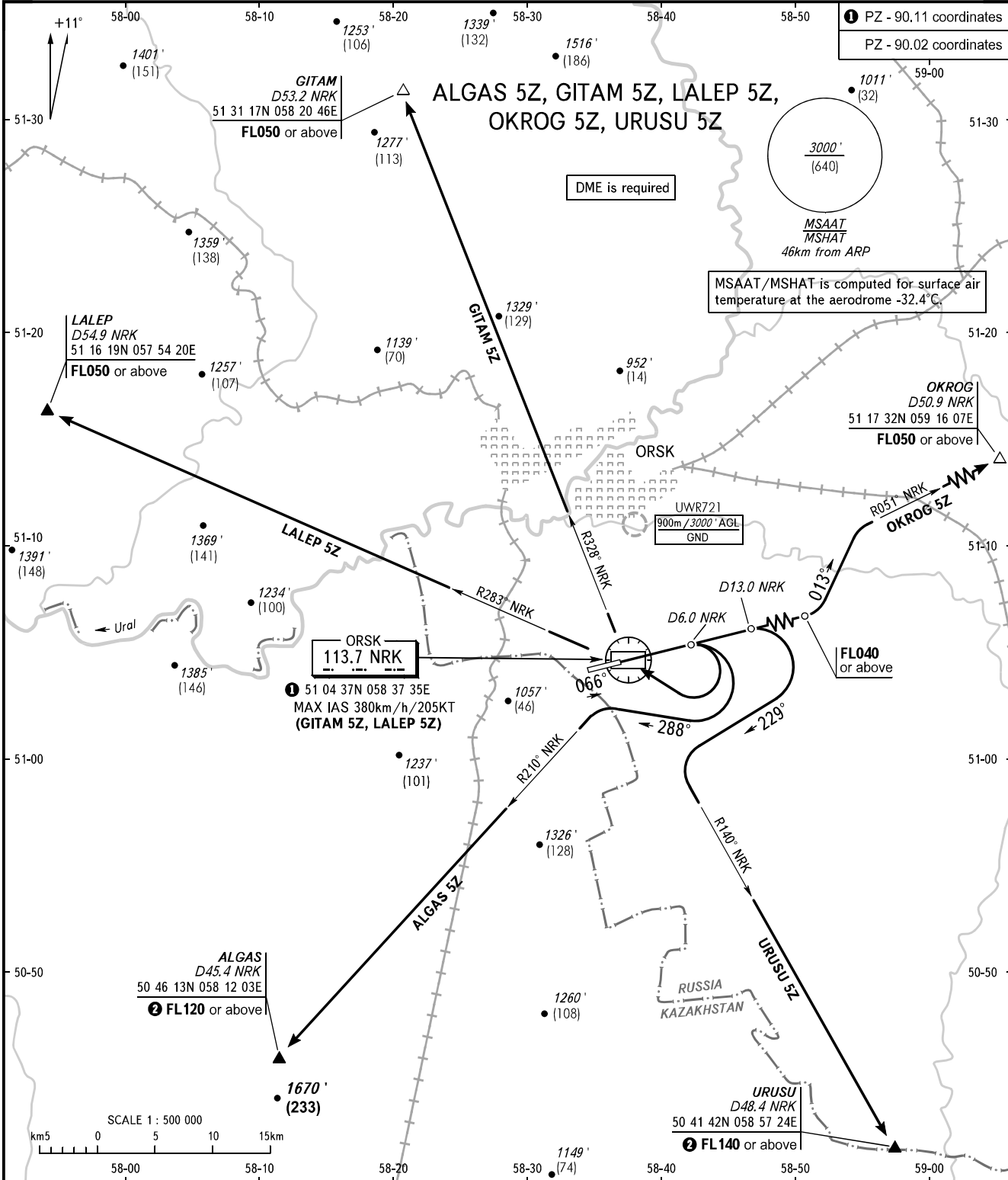


STANDARD DEPARTURE CHART
INSTRUMENT (SID) - ICAO

ORSK, RUSSIA
ORSK
RWY 07

TRANSITION ALT: 3000'
TRANSITION HGT: (640)



① PZ - 90.11 coordinates
PZ - 90.02 coordinates

TOWER 122.700		WARNING: The minimum climb gradients are as follows (required due to the airspace limitation): - 4.5% up to FL120 for SID ALGAS 5Z ③; - 7.8% up to FL140 for SID URUSU 5Z ③.
BEARINGS AND TRACKS ARE MAGNETIC ALTITUDES IN FEET HEIGHTS IN METRES ELEVATIONS IN FEET AND METRES DISTANCES IN KILOMETRES		
Alt set: -QNH(QFE on req); -hPa(mm on req).		② Lower flight levels are AVBL by coordination with ATS unit. ③ When flight levels below FL120 are prohibited for passing ALGAS and when flight levels below FL140 are prohibited for passing URUSU.

CHANGE: MAX IAS