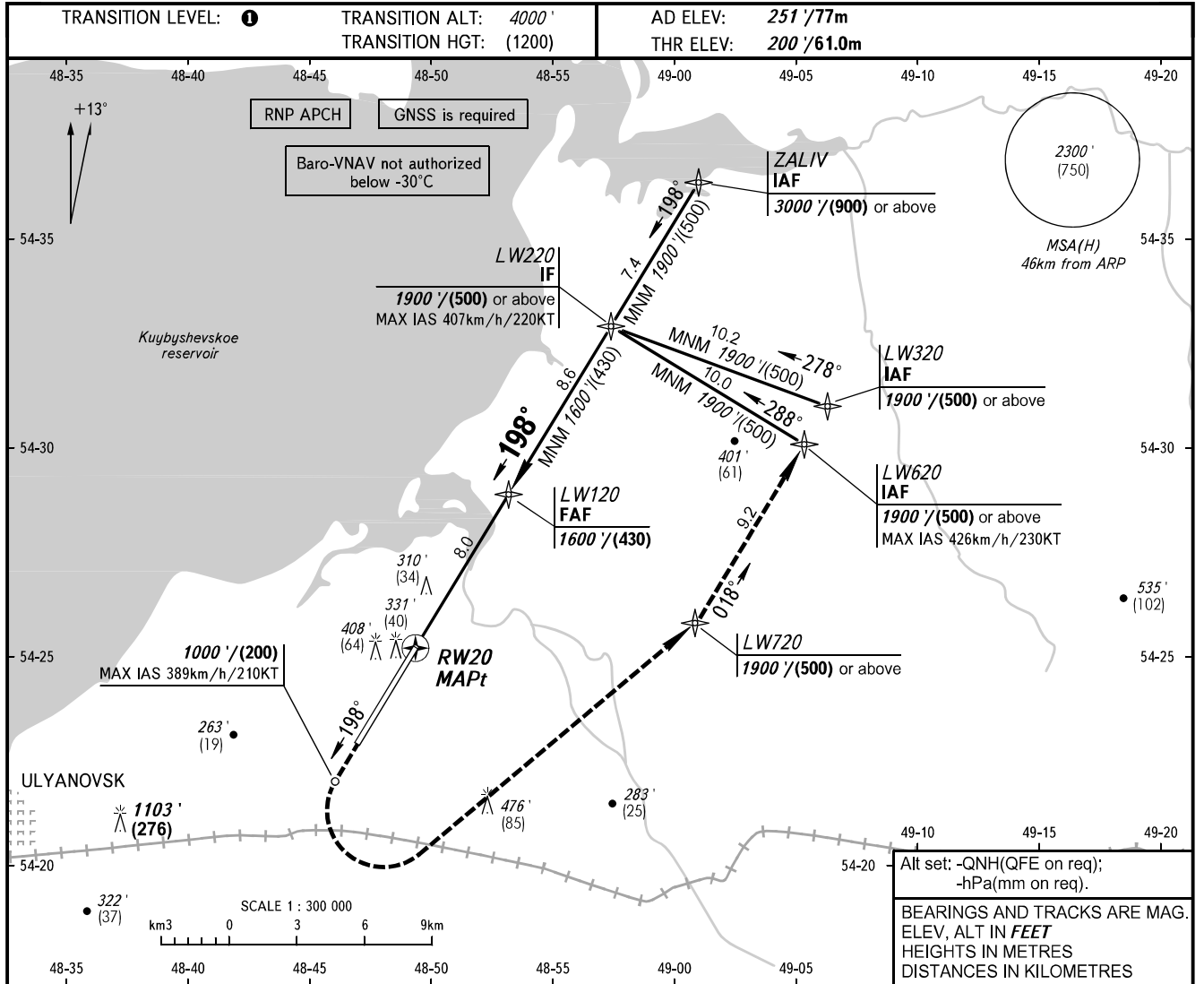


**INSTRUMENT
APPROACH
CHART - ICAO**

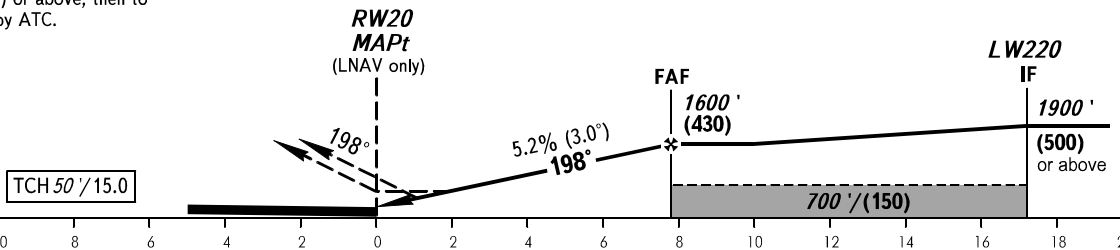
VOSTOCHNY TOWER 124.200

**ULYANOVSK, RUSSIA
VOSTOCHNY
RNP RWY 20**



MISSED APPROACH
Climb straight ahead to 1000'/(200),
turn LEFT to LW720 climbing to
1900'/(500) or above, then to
LW620 or by ATC.

DIST to RW20	1.9	3.0	5.0	7.0
ALTITUDE/HEIGHT	570'/(115)	770'/(175)	1110'/(275)	1450'/(380)



OCA(H)		A	B	C	D							
Straight-in	LNAV	570' (370') (115)	570' (370') (115)	570' (370') (115)	570' (370') (115)							
	LNAV/VNAV	463' (263') (80)	473' (273') (83)	482' (282') (86)	555' (355') (108)							
Circling		680' (420') (130)	750' (500') (150)	870' (600') (190)	950' (700') (210)							
GROUND SPEED		km/h		150	180	210	240	270	300	330	360	390
		kt		81	97	113	130	146	162	178	194	211
RATE OF DESCENT		m/s		2.2	2.6	3.0	3.5	3.9	4.3	4.8	5.2	5.6
		ft/min		427	512	597	682	768	853	938	1024	1109

1 TRANSITION LEVEL:
- FL050 when QNH is 977 hPa (733mm mercury column) or above;
- FL060 when QNH is less than 977 hPa (733mm mercury column).
WARNING
Visual manoeuvring NW of the aerodrome
is PROHIBITED.