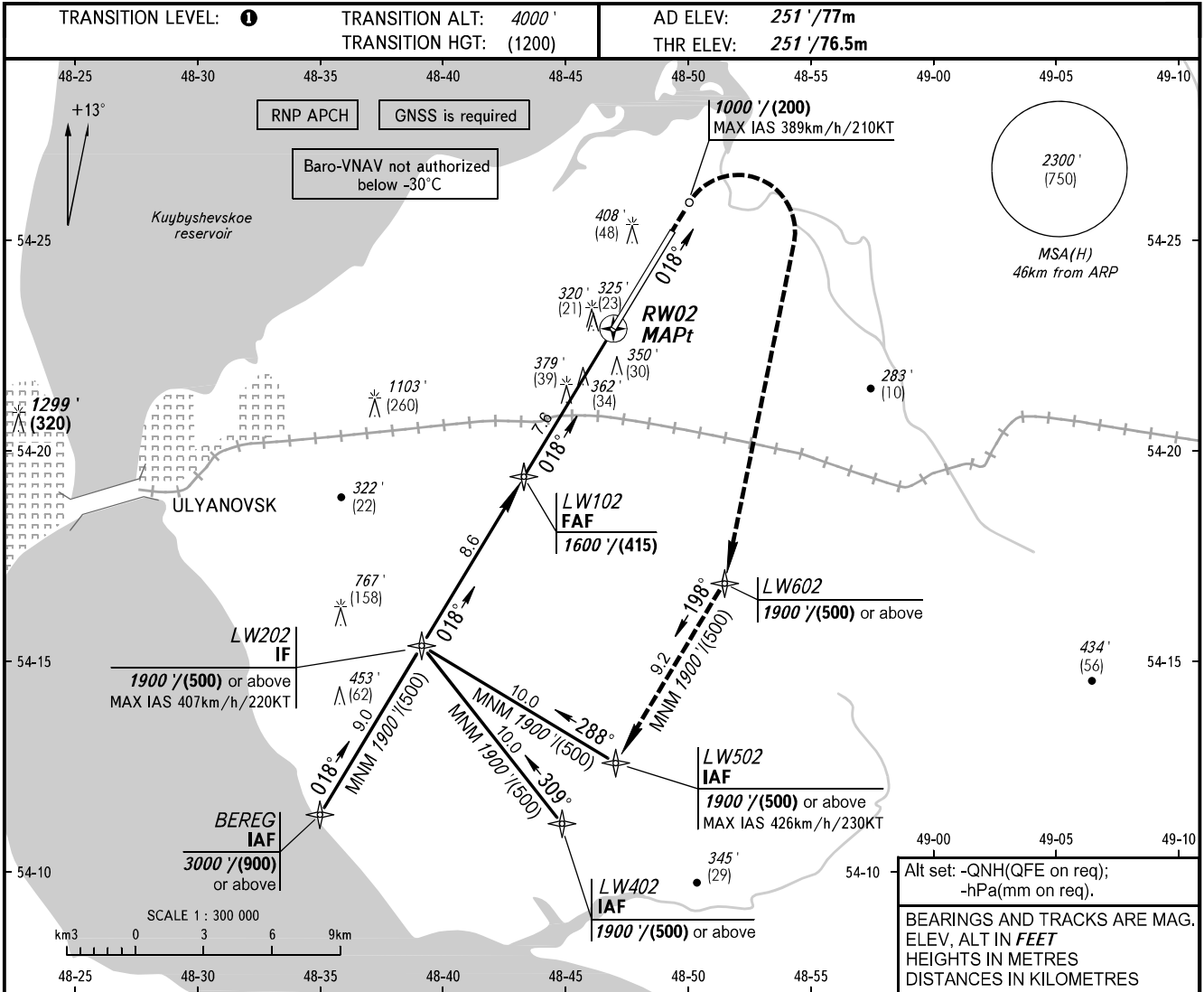


**INSTRUMENT
APPROACH
CHART - ICAO**

VOSTOCHNY TOWER 124.200

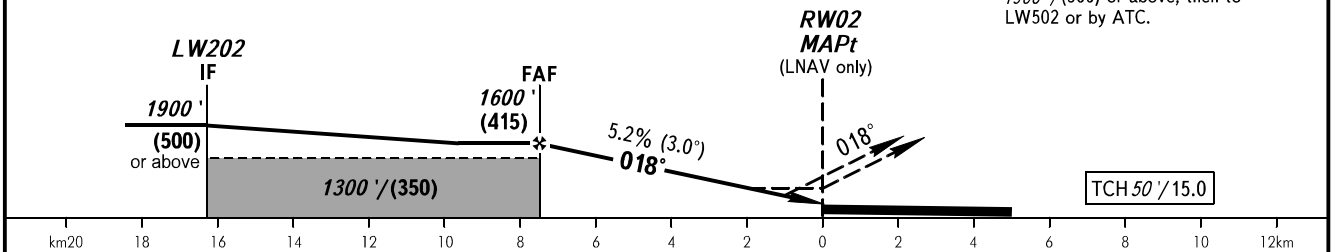
**ULYANOVSK, RUSSIA
VOSTOCHNY
RNP RWY 02**



DIST to RW02	7.0	5.0	3.0	1.9
ALTITUDE/HEIGHT	1500' / (380)	1160' / (275)	820' / (175)	630' / (115)

Alt set: -QNH(QFE on req);
-hPa(mm on req).
BEARINGS AND TRACKS ARE MAG.
ELEV, ALT IN FEET
HEIGHTS IN METRES
DISTANCES IN KILOMETRES

MISSED APPROACH
Climb straight ahead to 1000' / (200),
turn RIGHT to LW602 climbing to
1900' / (500) or above, then to
LW502 or by ATC.



OCA(H)		A	B	C	D
Straight-in	LNAV	630' (380') (115)	630' (380') (115)	630' (380') (115)	630' (380') (115)
	LNAV/VNAV	457' (206') (63)	466' (215') (67)	476' (225') (69)	486' (235') (72)
Circling		680' (420') (130)	750' (500') (150)	870' (600') (190)	950' (700') (210)

1 TRANSITION LEVEL:
- FLO50 when QNH is 977 hPa (733mm mercury column) or above;
- FLO60 when QNH is less than 977 hPa (733mm mercury column).

WARNING
Visual manoeuvring NW of the aerodrome
is PROHIBITED.

GROUND SPEED	km/h										
		150	180	210	240	270	300	330	360	390	
RATE OF DESCENT	kt										
		81	97	113	130	146	162	178	194	211	
	m/s										
		2.2	2.6	3.0	3.5	3.9	4.3	4.8	5.2	5.6	
	ft/min										
		427	512	597	682	768	853	938	1024	1109	

CHANGE: NIL