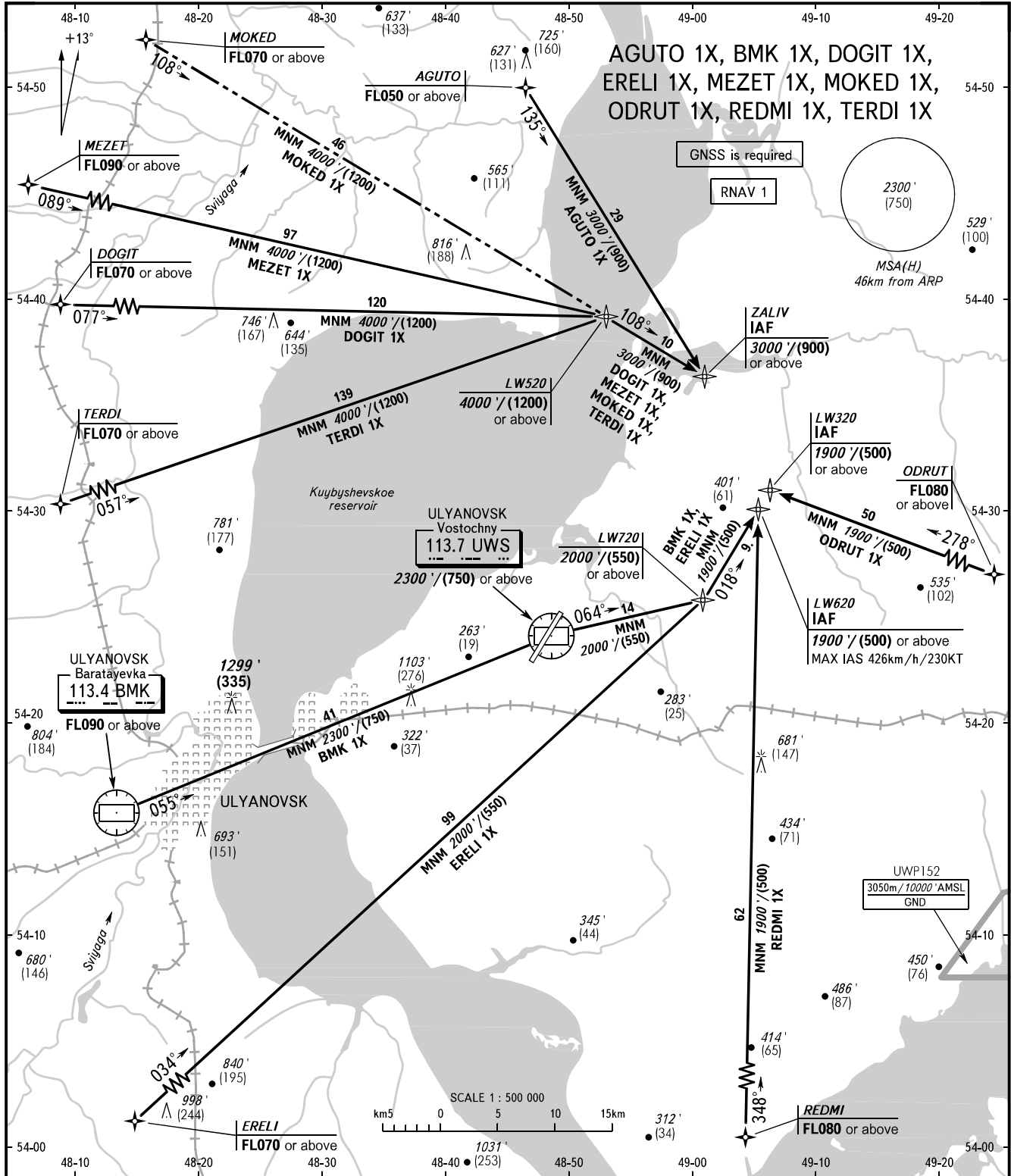


STANDARD ARRIVAL CHART
INSTRUMENT (STAR) - ICAO

ULYANOVSK, RUSSIA
VOSTOCHNY
RNAV RWY 20

TRANSITION
LEVEL: **1**



VOSTOCHNY TOWER 124.200

1 TRANSITION LEVEL:
- FL050 when QNH is 977 hPa (733mm mercury column) or above;
- FL060 when QNH is less than 977 hPa (733mm mercury column).

BEARINGS AND TRACKS ARE MAGNETIC
ALTITUDES IN FEET
ELEVATIONS IN FEET AND METRES
HEIGHTS IN METRES
DISTANCES IN KILOMETRES

Alt set: - QNH (QFE on req);
- hPa (mm on req).