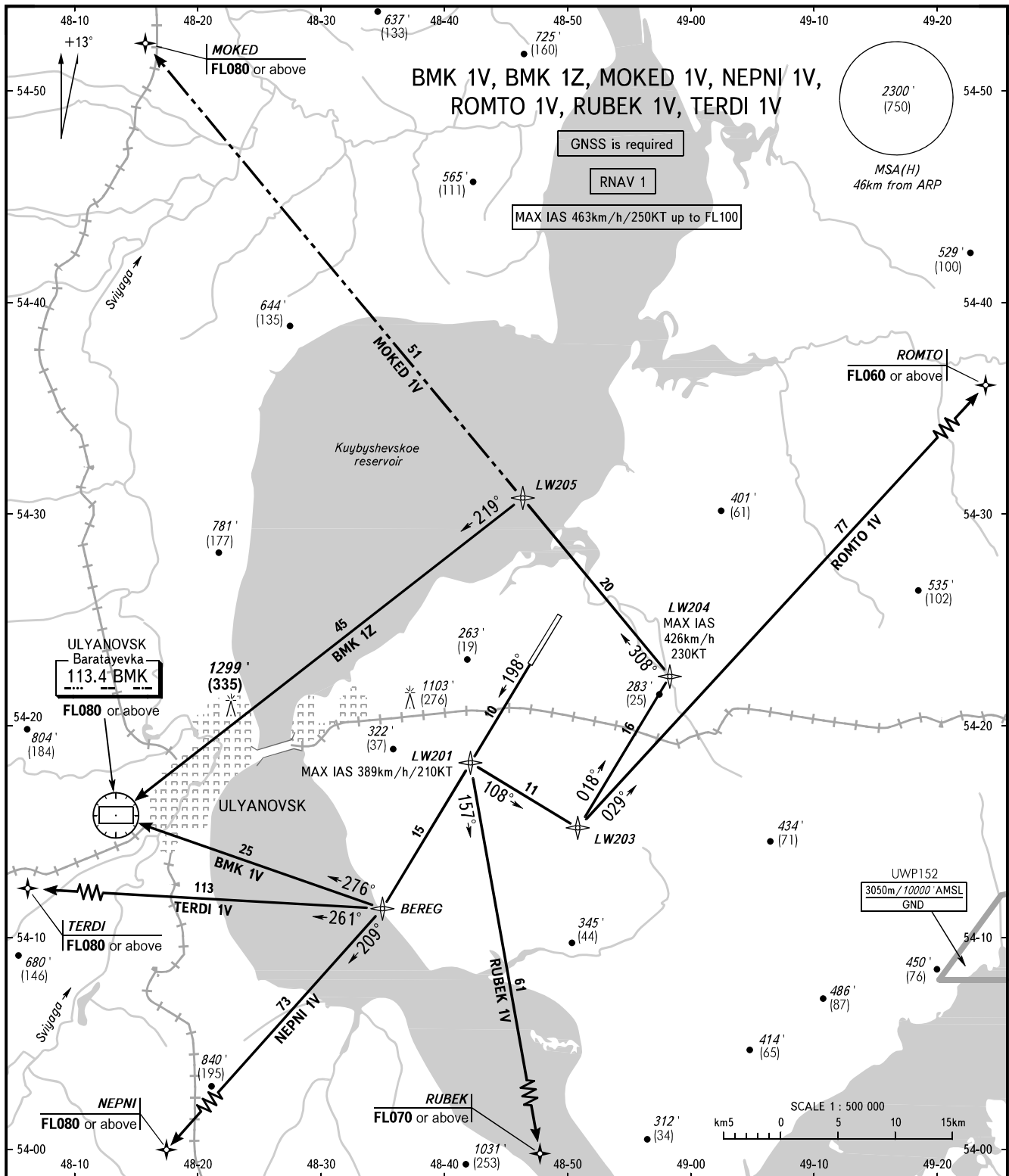


STANDARD DEPARTURE CHART
INSTRUMENT (SID) - ICAO

TRANSITION ALT: **4000'**
TRANSITION HGT: **(1200)**

ULYANOVSK, RUSSIA
VOSTOCHNY
RNAV RWY 20



VOSTOCHNY TOWER **124.200**

The minimum climb gradient:
- 5.6% up to FL070 for SID BMK 1V;
- 5.6% up to 4000'/(1200) for SID TERDI 1V.

BEARINGS AND TRACKS ARE MAGNETIC
ALTITUDES IN **FEET**
ELEVATIONS IN **FEET** AND METRES
HEIGHTS IN METRES
DISTANCES IN KILOMETRES

Alt set: - QNH (QFE on req);
- hPa (mm on req).