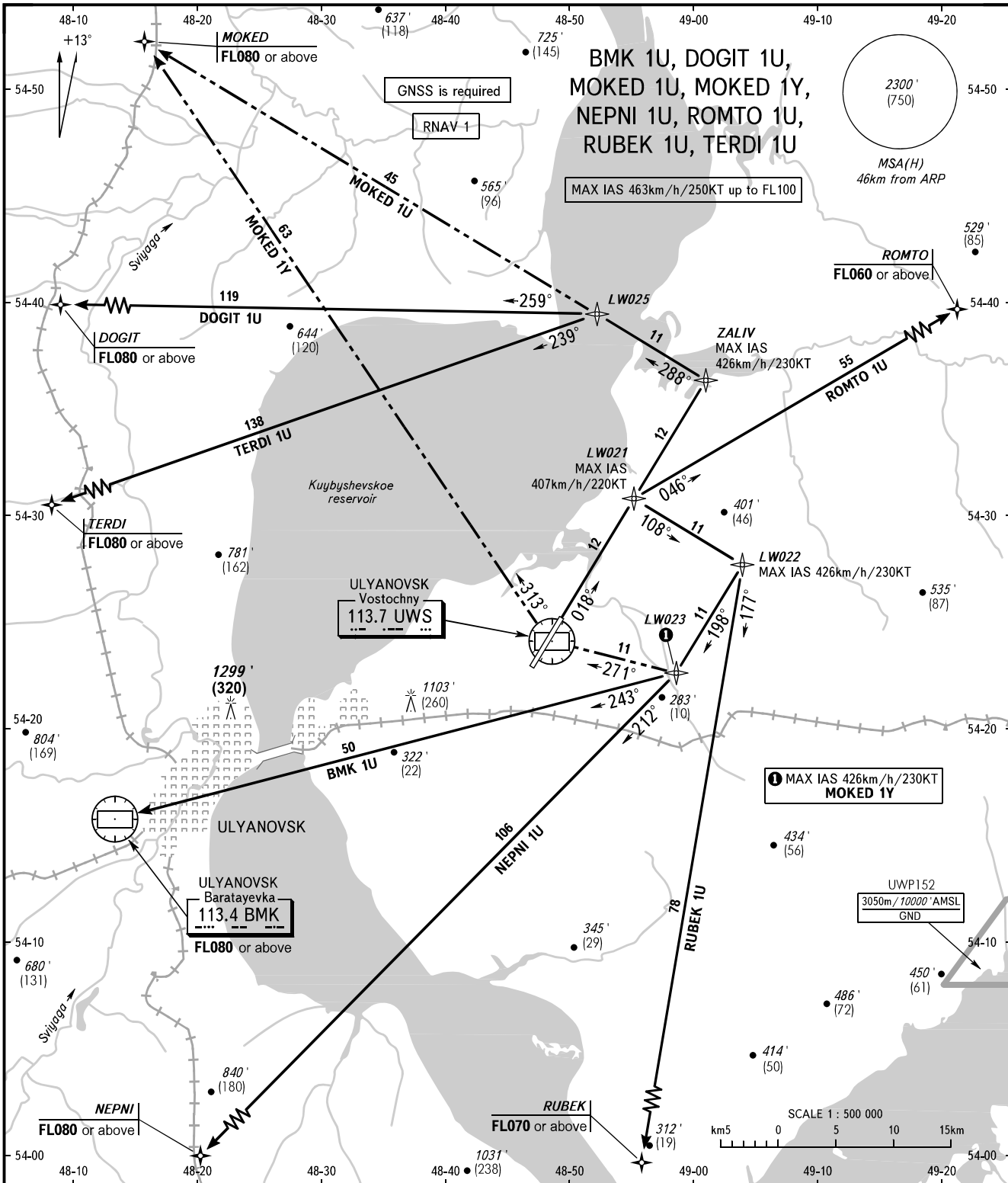


STANDARD DEPARTURE CHART
INSTRUMENT (SID) - ICAO

TRANSITION ALT: **4000'**
TRANSITION HGT: **(1200)**

ULYANOVSK, RUSSIA
VOSTOCHNY
RNAV RWY 02



VOSTOCHNY TOWER **124.200**

The minimum climb gradient:
- 6.2% up to **4000'**/(1200) for SID DOGIT 1U, MOKED 1U, TERDI 1U.

BEARINGS AND TRACKS ARE MAGNETIC
ALTITUDES IN **FEET**
ELEVATIONS IN **FEET** AND METRES
HEIGHTS IN METRES
DISTANCES IN KILOMETRES

Alt set: - QNH (QFE on req);
- hPa (mm on req).

CHANGE: LW023