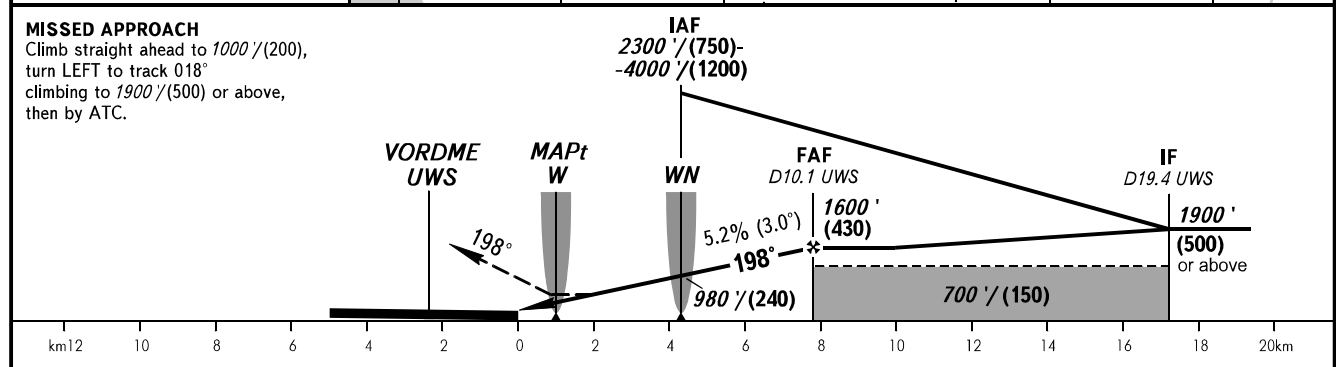
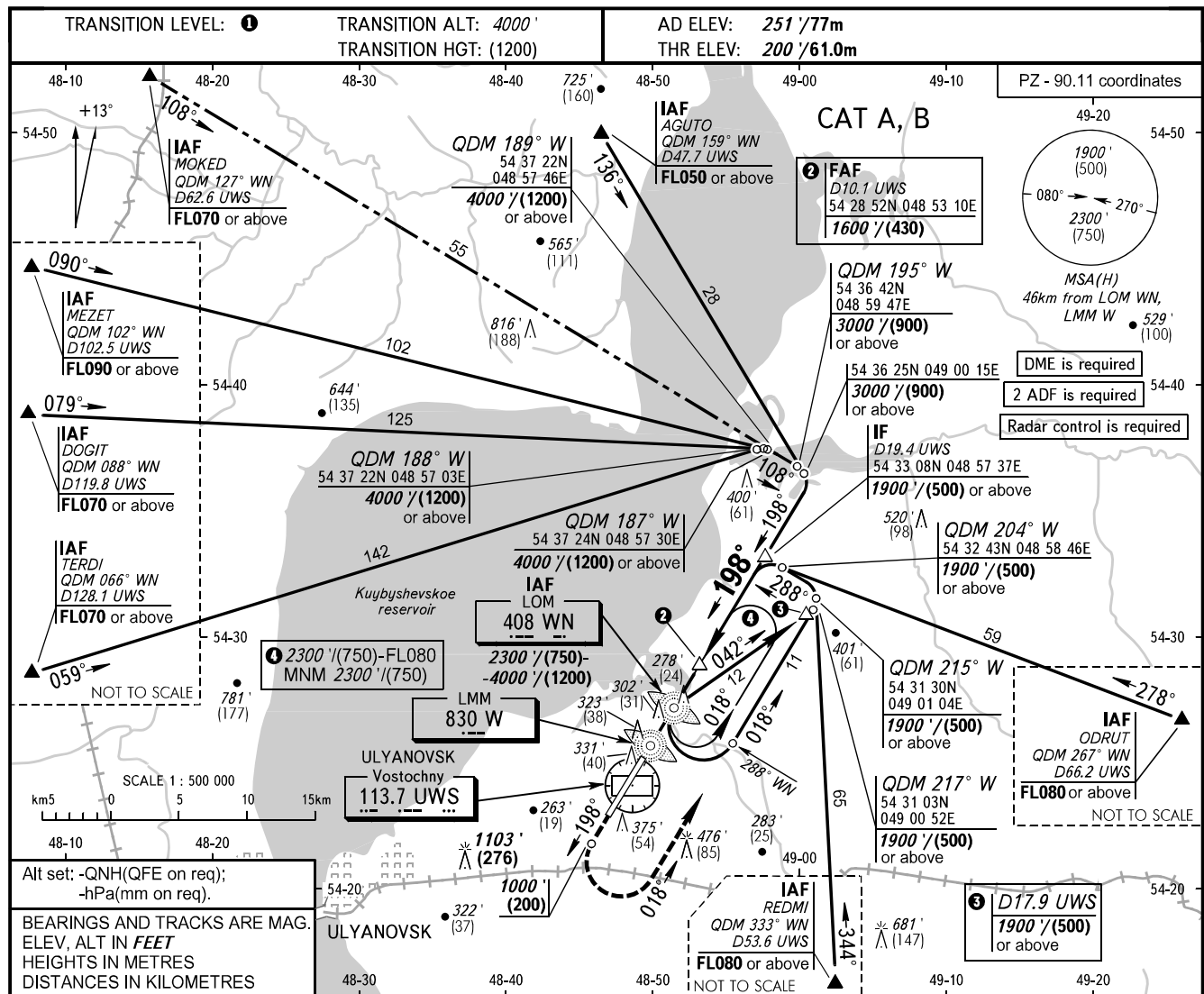


**INSTRUMENT  
APPROACH  
CHART - ICAO**

VOSTOCHNY TOWER 124.200

**ULYANOVSK, RUSSIA  
VOSTOCHNY  
2 NDB Y, NDB Y RWY 20**



OCA(H)		A	B								
Straight-in Approach	2 NDB	With FAF	580' (380')/(115)	580' (380')/(115)							
		WO FAF	900' (700')/(215)	900' (700')/(215)							
	NDB	With FAF	570' (370')/(115)	570' (370')/(115)							
		WO FAF	620' (420')/(130)	620' (420')/(130)							
Circling		680' (420')/(130)	750' (500')/(150)								
GROUND SPEED		km/h	150	180	210	240	270	300	330	360	390
		kt	81	97	113	130	146	162	178	194	211
RATE OF DESCENT		m/s	2.2	2.6	3.0	3.5	3.9	4.3	4.8	5.2	5.6
		ft/min	427	512	597	682	768	853	938	1024	1109

**1** TRANSITION LEVEL:  
- FL050 when QNH is 977 hPa (733mm mercury column) or above;  
- FL060 when QNH is less than 977 hPa (733mm mercury column).  
**WARNING**  
Visual manoeuvring NW of the aerodrome is PROHIBITED.