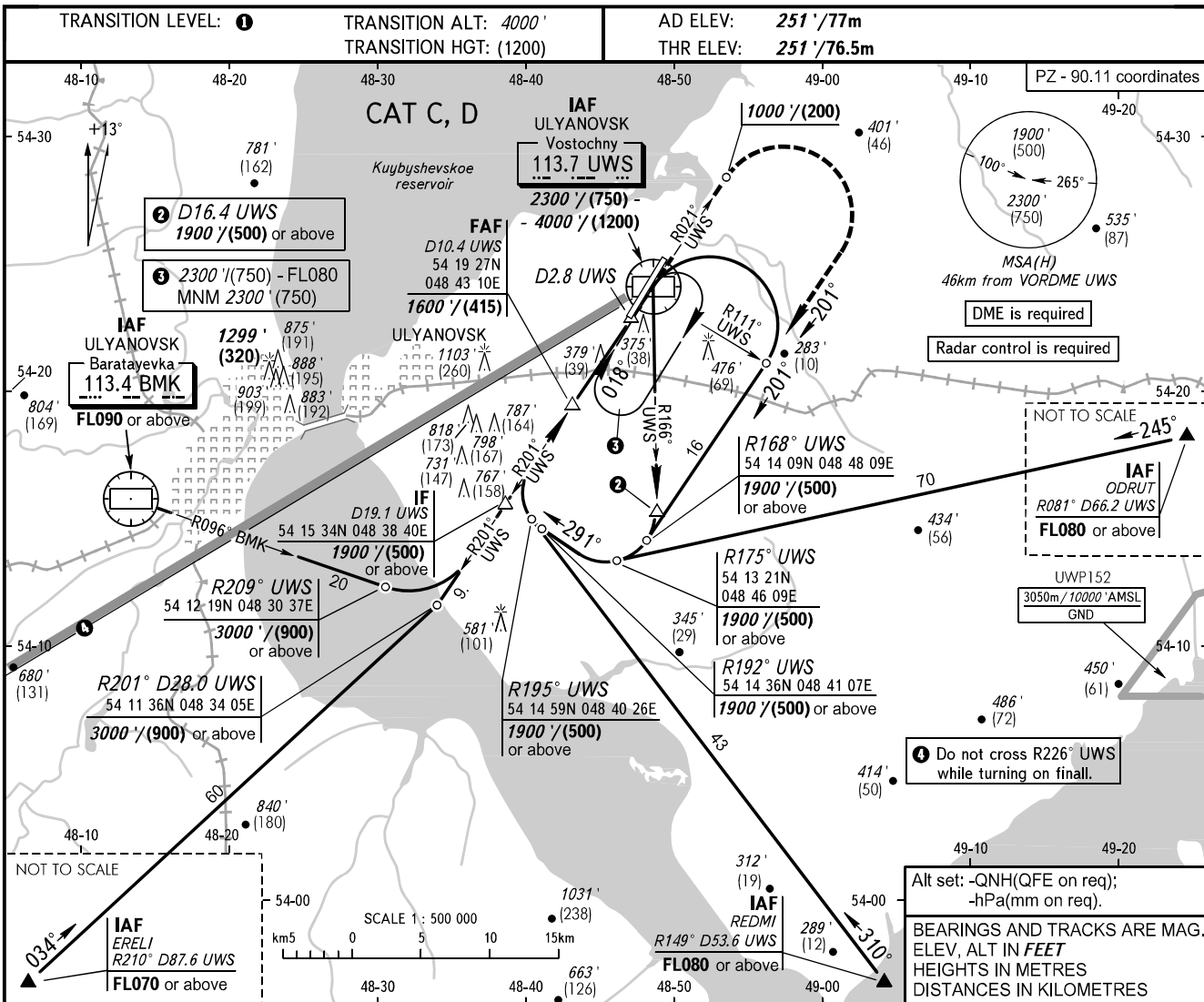


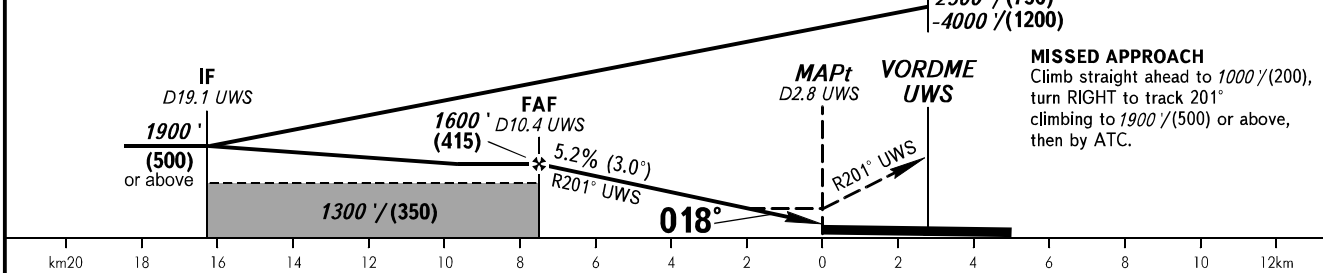
**INSTRUMENT  
APPROACH  
CHART - ICAO**

VOSTOCHNY TOWER 124.200

**ULYANOVSK, RUSSIA  
VOSTOCHNY  
VOR X RWY 02**



DME UWS	10.0	8.0	6.0
ALTITUDE/HEIGHT	1530'/(395)	1190'/(290)	850'/(185)



OCA(H)	A	B	C	D						
Straight-in Approach			630' (380') (115)	630' (380') (115)						
Circling			870' (600') (190)	950' (700') (210)						
GROUND SPEED	km/h	150	180	210	240	270	300	330	360	390
	kt	81	97	113	130	146	162	178	194	211
RATE OF DESCENT	m/s	2.2	2.6	3.0	3.5	3.9	4.3	4.8	5.2	5.6
	ft/min	427	512	597	682	768	853	938	1024	1109

**1** TRANSITION LEVEL:  
- FL050 when QNH is 977 hPa (733mm mercury column) or above;  
- FL060 when QNH is less than 977 hPa (733mm mercury column).

**WARNING:**  
1. Visual manoeuvring NW of the aerodrome is PROHIBITED.  
2. Final approach segment is offset by 3° from RCL.

CHANGE: New chart