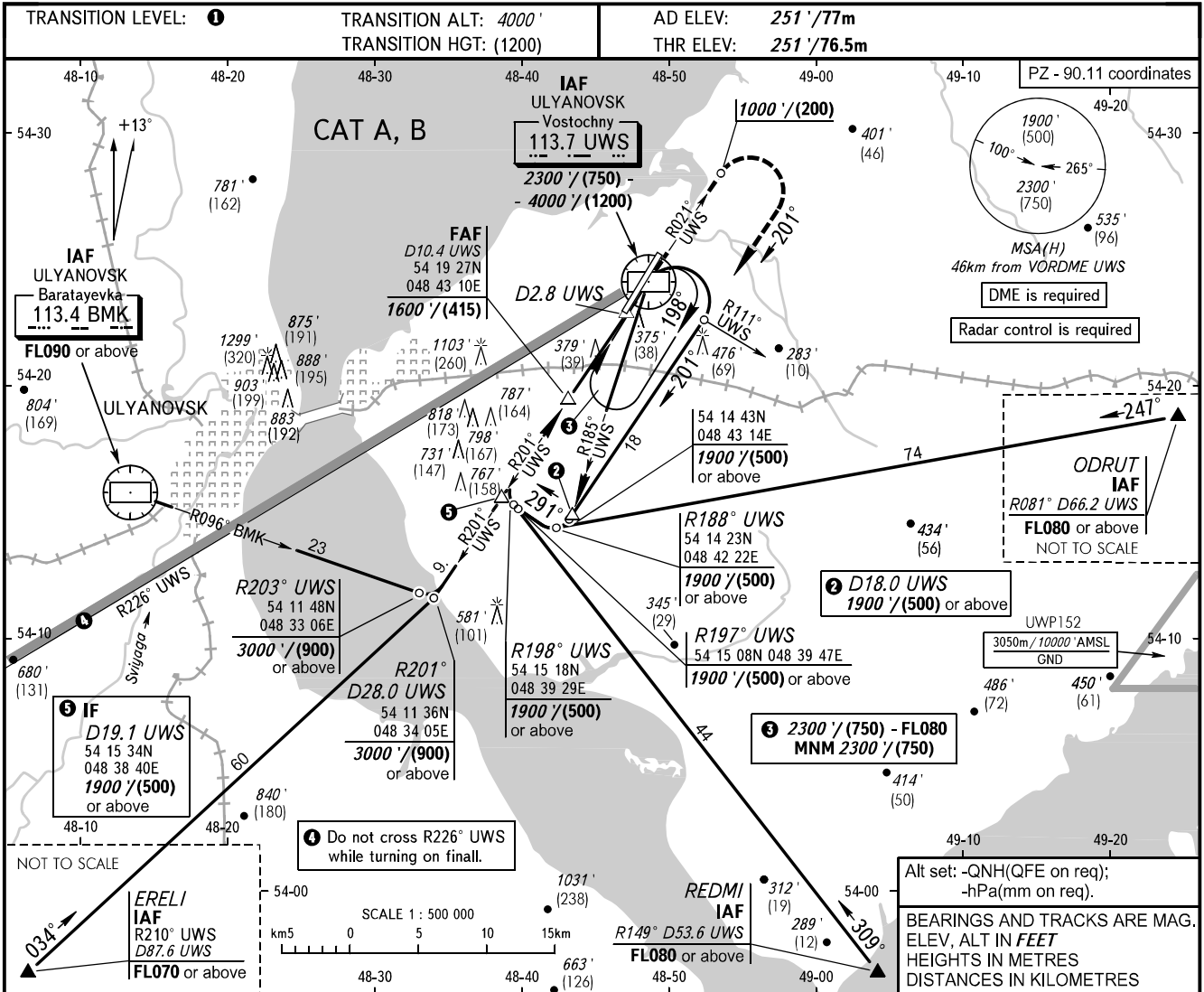


**INSTRUMENT
APPROACH
CHART - ICAO**

**ULIANOVSK, RUSSIA
VOSTOCHNY
VOR Y RWY 02**

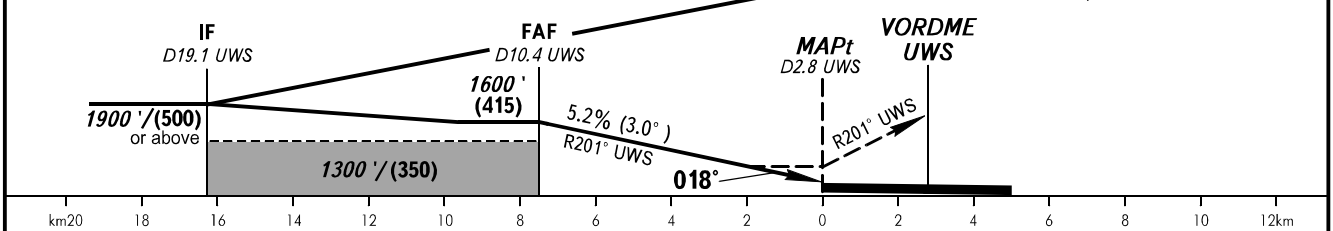
VOSTOCHNY TOWER 124.200



DME UWS	10.0	8.0	6.0
ALTITUDE/HEIGHT	1530' / (395)	1190' / (290)	850' / (185)

IAF
2300' / (750) -
-4000' / (1200)

MISSED APPROACH
Climb straight ahead to 1000' / (200),
turn RIGHT to track 201°
climbing to 1900' / (500) or above,
then by ATC.



OCA(H)		A	B	C	D							
Straight-in	Approach	630' (380') (115)	630' (380') (115)									
	Circling	680' (420') (130)	750' (500') (150)									
GROUND SPEED		km/h		150	180	210	240	270	300	330	360	390
		kt		81	97	113	130	146	162	178	194	211
RATE OF DESCENT		m/s		2.2	2.6	3.0	3.5	3.9	4.3	4.8	5.2	5.6
		ft/min		427	512	597	682	768	853	938	1024	1109

1 TRANSITION LEVEL:
- FL050 when QNH is 977 hPa (733mm mercury column) or above;
- FL060 when QNH is less than 977 hPa (733mm mercury column).

WARNING:
1. Visual manoeuvring NW of the aerodrome
is PROHIBITED.
2. Final approach segment is offset by 3° from RCL.

CHANGE: New chart