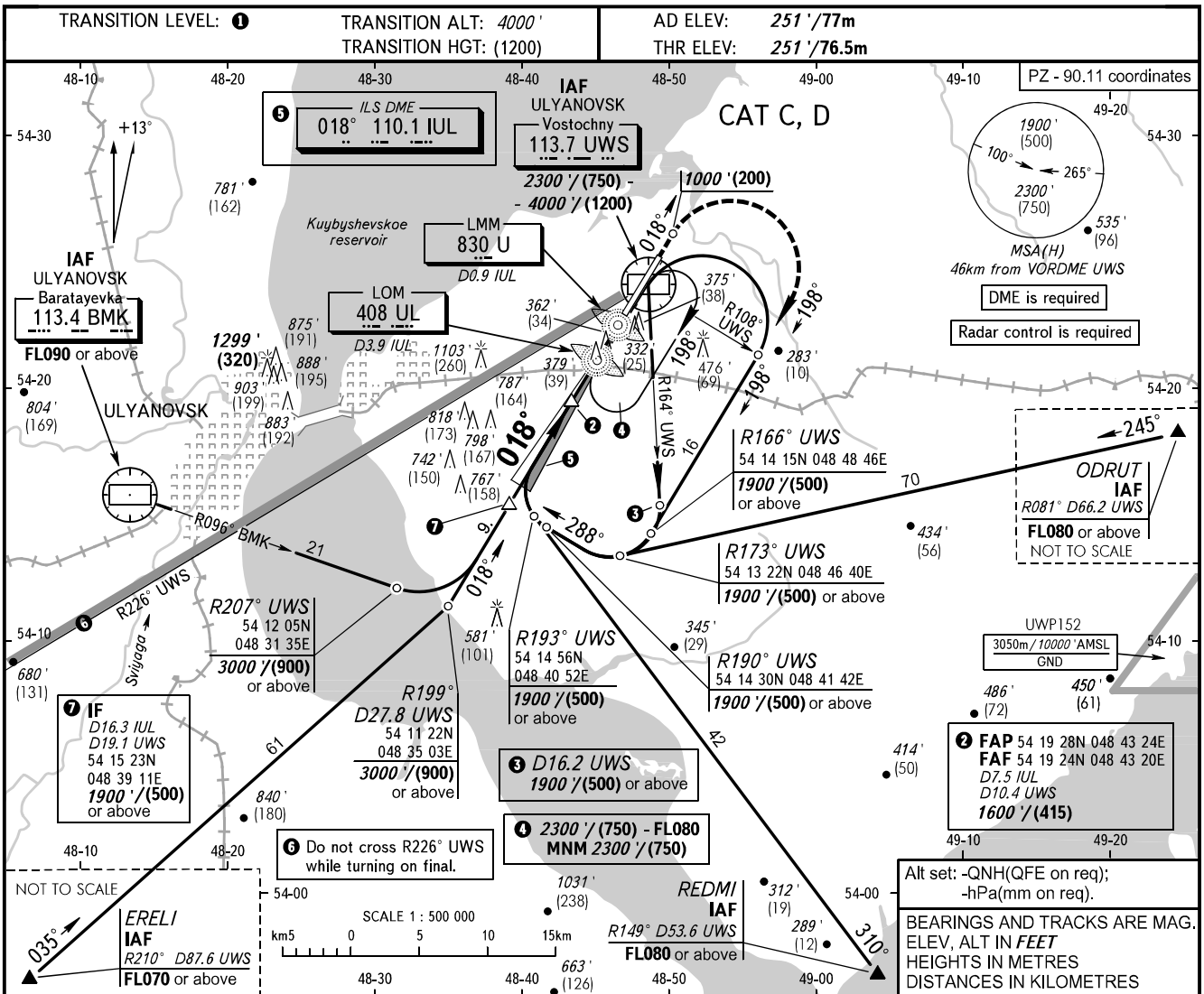


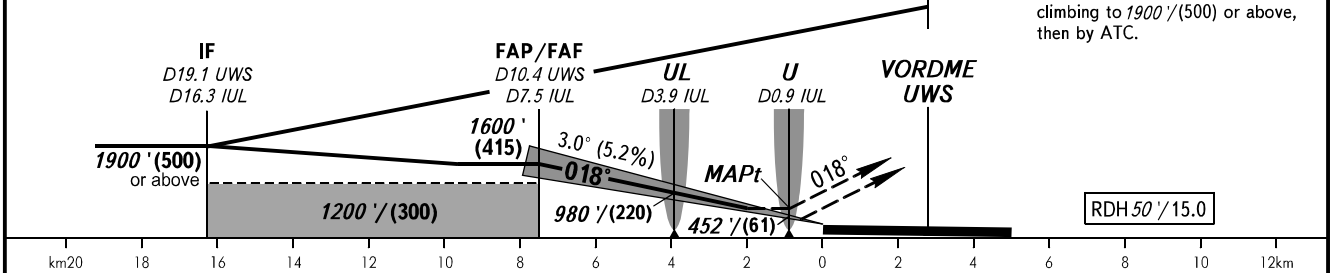
**INSTRUMENT  
APPROACH  
CHART - ICAO**

VOSTOCHNY TOWER 124.200

**ULYANOVSK, RUSSIA  
VOSTOCHNY  
ILS X CAT I, LOC X RWY 02**



DME UWS	10.0	8.0	6.0
ALTITUDE/HEIGHT	1530' / (395)	1190' / (290)	850' / (185)



OCA(H)		A	B	C	D							
Straight-in	CAT I			406' (155') (48)	416' (165') (51)							
	LOC			610' (360') (110)	610' (360') (110)							
Circling				870' (600') (190)	950' (700') (210)							
GROUND SPEED	km/h			150	180	210	240	270	300	330	360	390
	kt			81	97	113	130	146	162	178	194	211
RATE OF DESCENT	m/s			2.2	2.6	3.0	3.5	3.9	4.3	4.8	5.2	5.6
	ft/min			427	512	597	682	768	853	938	1024	1109

**1** TRANSITION LEVEL:  
- FL050 when QNH is 977 hPa (733mm mercury column) or above;  
- FL060 when QNH is less than 977 hPa (733mm mercury column).

**WARNING:**  
1. Visual manoeuvring NW of the aerodrome is PROHIBITED.  
2. Zero range of DME IUL is indicated at RWY 02 THR.

CHANGE: New chart