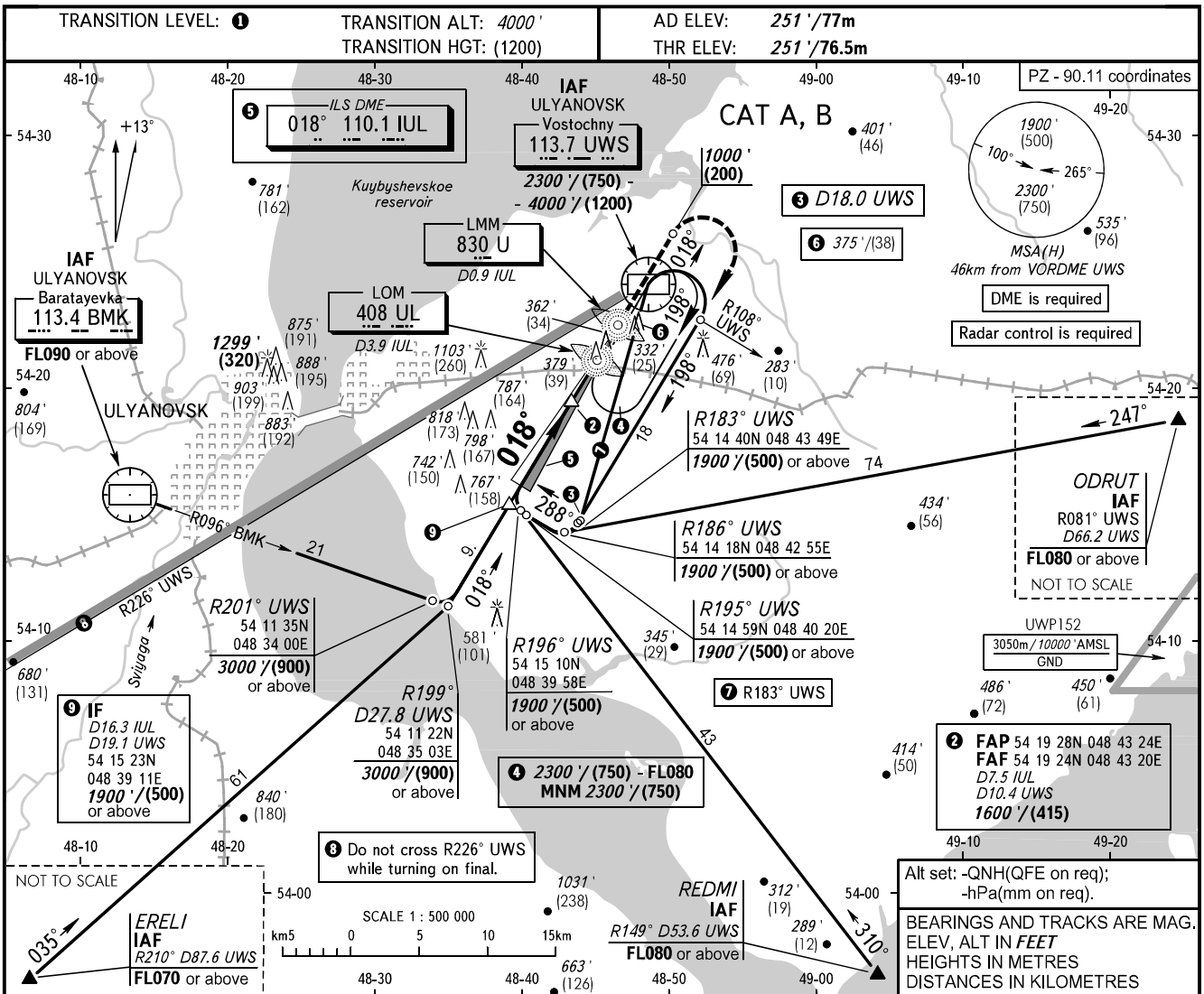


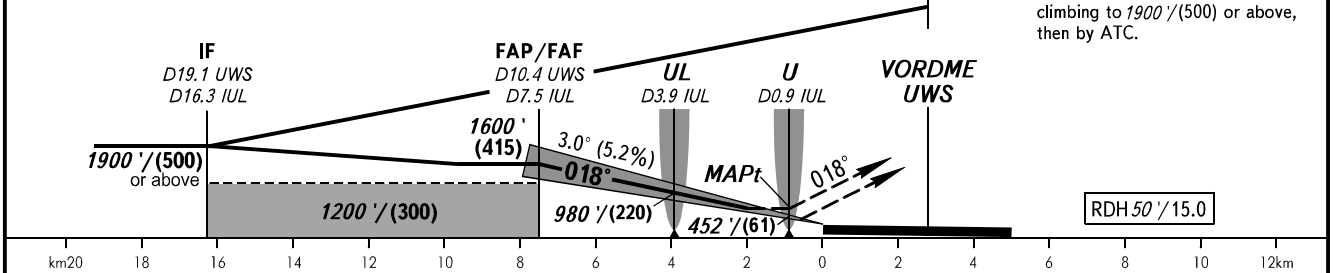
**INSTRUMENT
APPROACH
CHART - ICAO**

VOSTOCHNY TOWER 124.200

**ULYANOVSK, RUSSIA
VOSTOCHNY
ILS Y CAT I, LOC Y RWY 02**



DME UWS	10.0	8.0	6.0
ALTITUDE/HEIGHT	1530' / (395)	1190' / (290)	850' / (185)



OCA(H)		A	B	C	D						
Straight-in	CAT I	388' (137') (42)	396' (145') (45)								
	LOC	610' (360') (110)	610' (360') (110)								
Approach											
Circling		680' (420') (130)	750' (500') (150)								
GROUND SPEED	km/h		150	180	210	240	270	300	330	360	390
	kt		81	97	113	130	146	162	178	194	211
RATE OF DESCENT	m/s		2.2	2.6	3.0	3.5	3.9	4.3	4.8	5.2	5.6
	ft/min		427	512	597	682	768	853	938	1024	1109

1 TRANSITION LEVEL:
- FL050 when QNH is 977 hPa (733mm mercury column) or above;
- FL060 when QNH is less than 977 hPa (733mm mercury column).
WARNING:
1. Visual manoeuvring NW of the aerodrome is PROHIBITED.
2. Zero range of DME IUL is indicated at RWY 02 THR.

MISSED APPROACH
Climb straight ahead to 1000'/(200), turn RIGHT to track 198° climbing to 1900'/(500) or above, then by ATC.

Alt set: -QNH(QFE on req);
-hPa(mm on req).
BEARINGS AND TRACKS ARE MAG.
ELEV, ALT IN FEET
HEIGHTS IN METRES
DISTANCES IN KILOMETRES

CHANGE: New chart