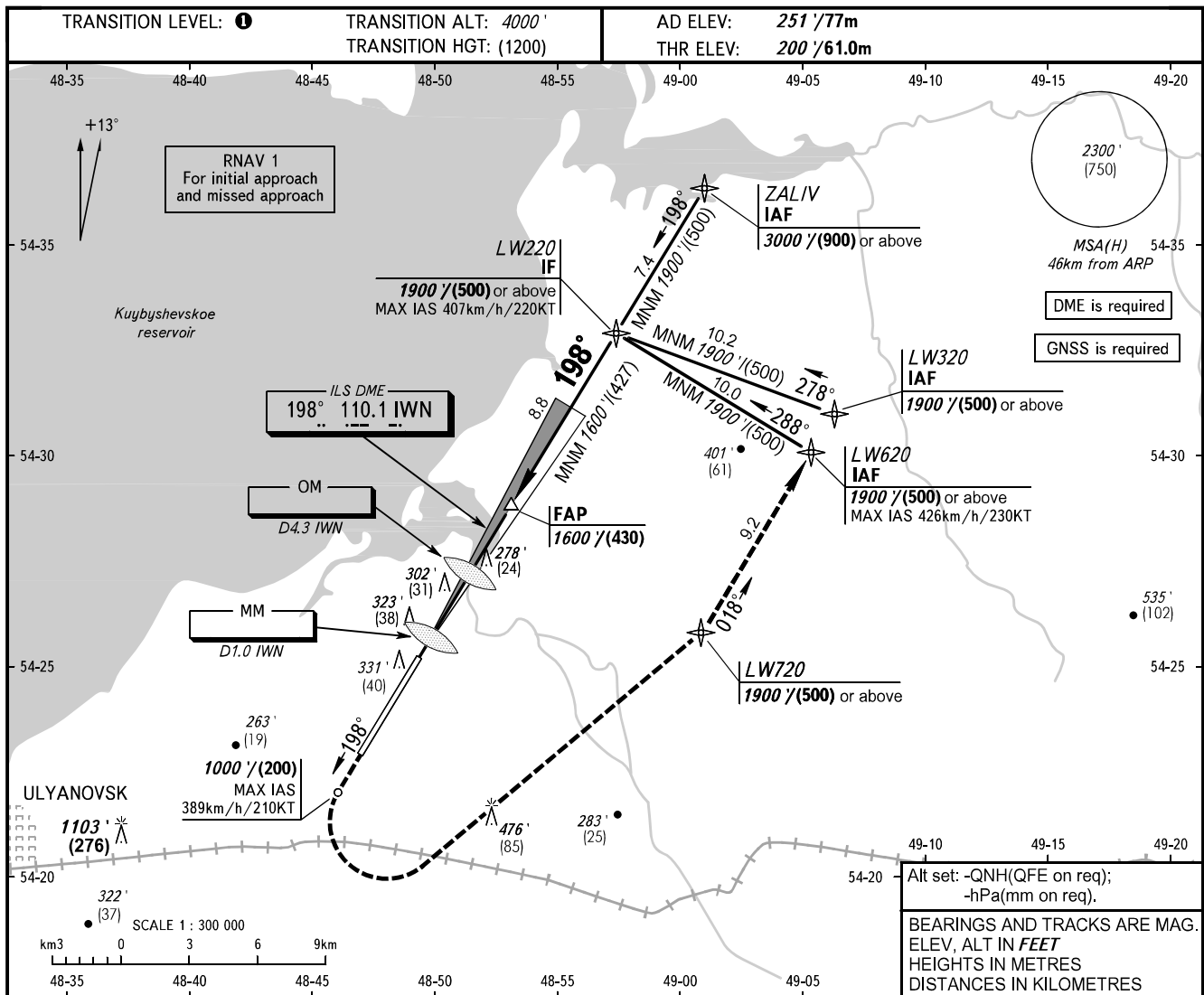


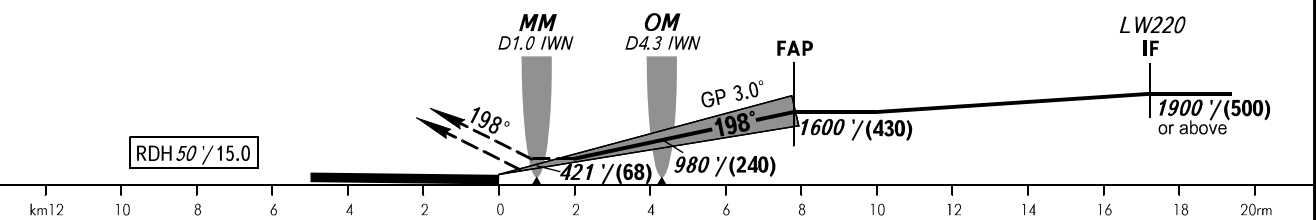
**INSTRUMENT  
APPROACH  
CHART - ICAO**

VOSTOCHNY TOWER 124.200

**ULYANOVSK, RUSSIA  
VOSTOCHNY  
ILS Z CAT I RWY 20**



**MISSED APPROACH**  
Climb straight ahead to 1000' / (200),  
turn LEFT to LW720 climbing to  
1900' / (500) or above, then to  
LW620 or by ATC.



OCA(H)		A	B	C	D						
Straight-in	CAT I	339' (139')	346' (146')	357' (157')	366' (166')						
		(42)	(45)	(48)	(51)						
Approach											
Circling		680' (420')	750' (500')	870' (600')	950' (700')						
GROUND SPEED		km/h	150	180	210	240	270	300	330	360	390
		kt	81	97	113	130	146	162	178	194	211
RATE OF DESCENT		m/s	2.2	2.6	3.0	3.5	3.9	4.3	4.8	5.2	5.6
		ft/min	427	512	597	682	768	853	938	1024	1109

**1** TRANSITION LEVEL:  
- FL050 when QNH is 977 hPa (733mm mercury column) or above;  
- FL060 when QNH is less than 977 hPa (733mm mercury column).  
**WARNING:**  
1. Visual manoeuvring NW of the aerodrome is PROHIBITED.  
2. Zero range of DME IWN is indicated at RWY 20 THR.