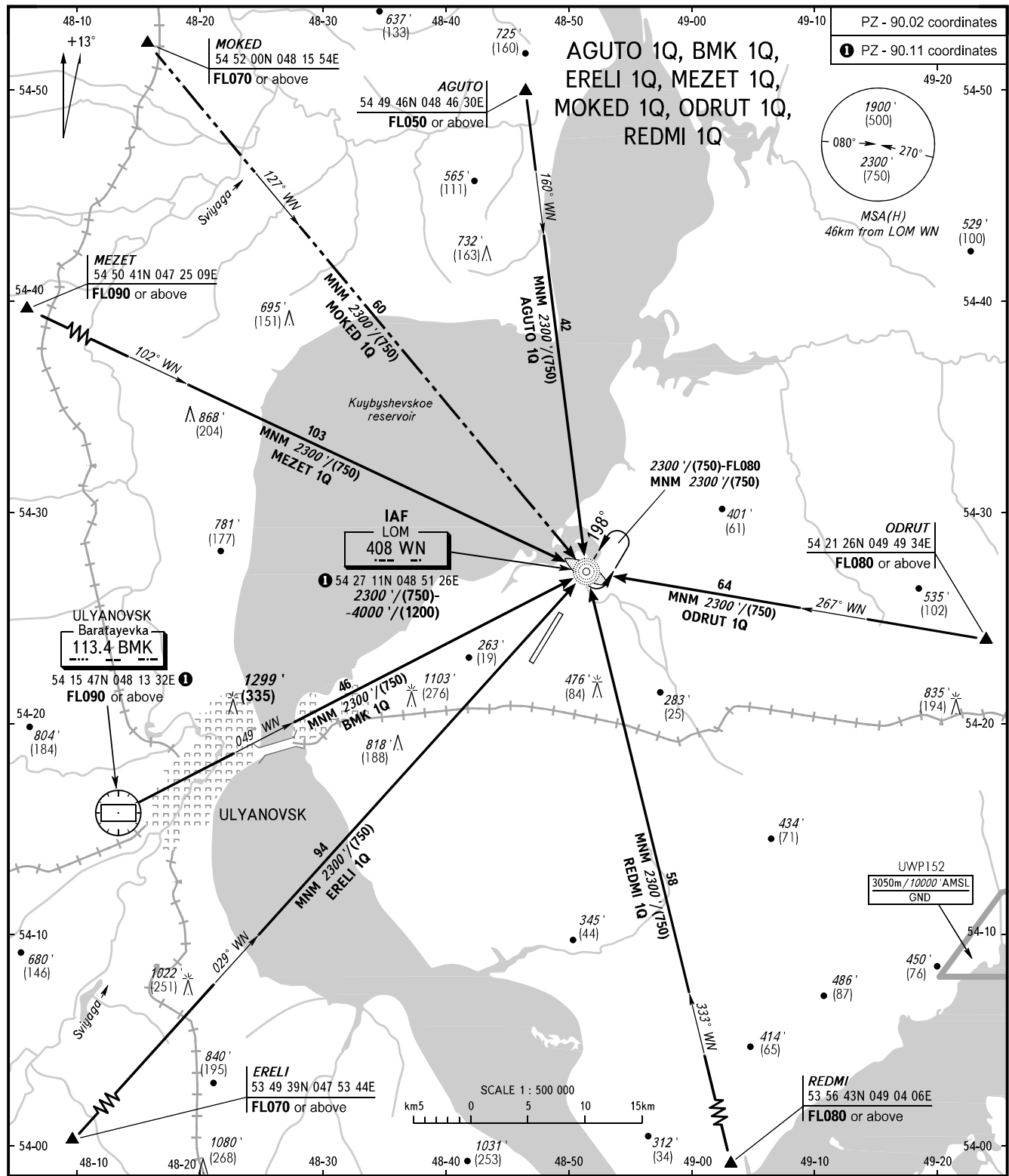


STANDARD ARRIVAL CHART  
INSTRUMENT (STAR) - ICAO

ULYANOVSK, RUSSIA  
VOSTOCHNY  
RWY 20

TRANSITION  
LEVEL: **2**



BEARINGS AND TRACKS ARE MAGNETIC  
ALTITUDES IN FEET  
ELEVATIONS IN FEET AND METRES  
HEIGHTS IN METRES  
DISTANCES IN KILOMETRES

Alt set: - QNH (QFE on req);  
- hPa (mm on req).

**2** TRANSITION LEVEL:  
- FL050 when QNH is 977 hPa (733mm mercury column) or above;  
- FL060 when QNH is less than 977 hPa (733mm mercury column).