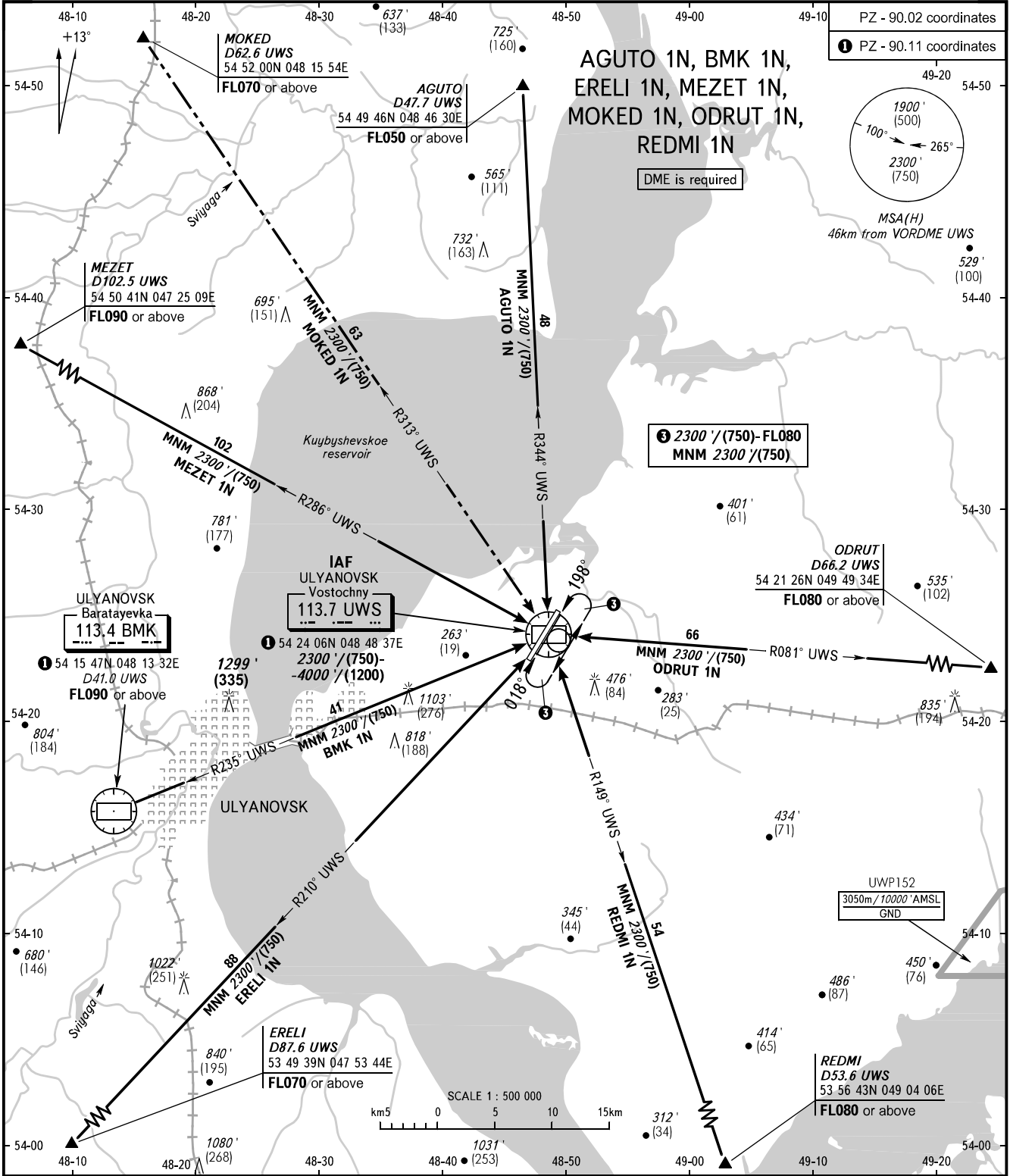


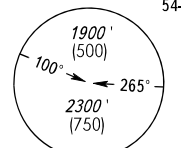
STANDARD ARRIVAL CHART
INSTRUMENT (STAR) - ICAO

ULYANOVSK, RUSSIA
VOSTOCHNY
RWY 02/20

TRANSITION
LEVEL : ②



PZ - 90.02 coordinates
① PZ - 90.11 coordinates



MSA(H)
46km from VORDME UWS
529' (100)
54-40

③ 2300' (750)-FL080
MNM 2300' (750)

ODRUT
D66.2 UWS
54 21 26N 049 49 34E
FL080 or above
535' (102)

UWP152
3050m/10000' AMSL
GND

REDMI
D53.6 UWS
53 56 43N 049 04 06E
FL080 or above

VOSTOCHNY TOWER 124.200

② TRANSITION LEVEL:
- FL050 when QNH is 977 hPa (733mm mercury column) or above;
- FL060 when QNH is less than 977 hPa (733mm mercury column).

BEARINGS AND TRACKS ARE MAGNETIC
ALTITUDES IN FEET
ELEVATIONS IN FEET AND METRES
HEIGHTS IN METRES
DISTANCES IN KILOMETRES

Alt set: - QNH (QFE on req);
- hPa (mm on req).

CHANGE: New chart