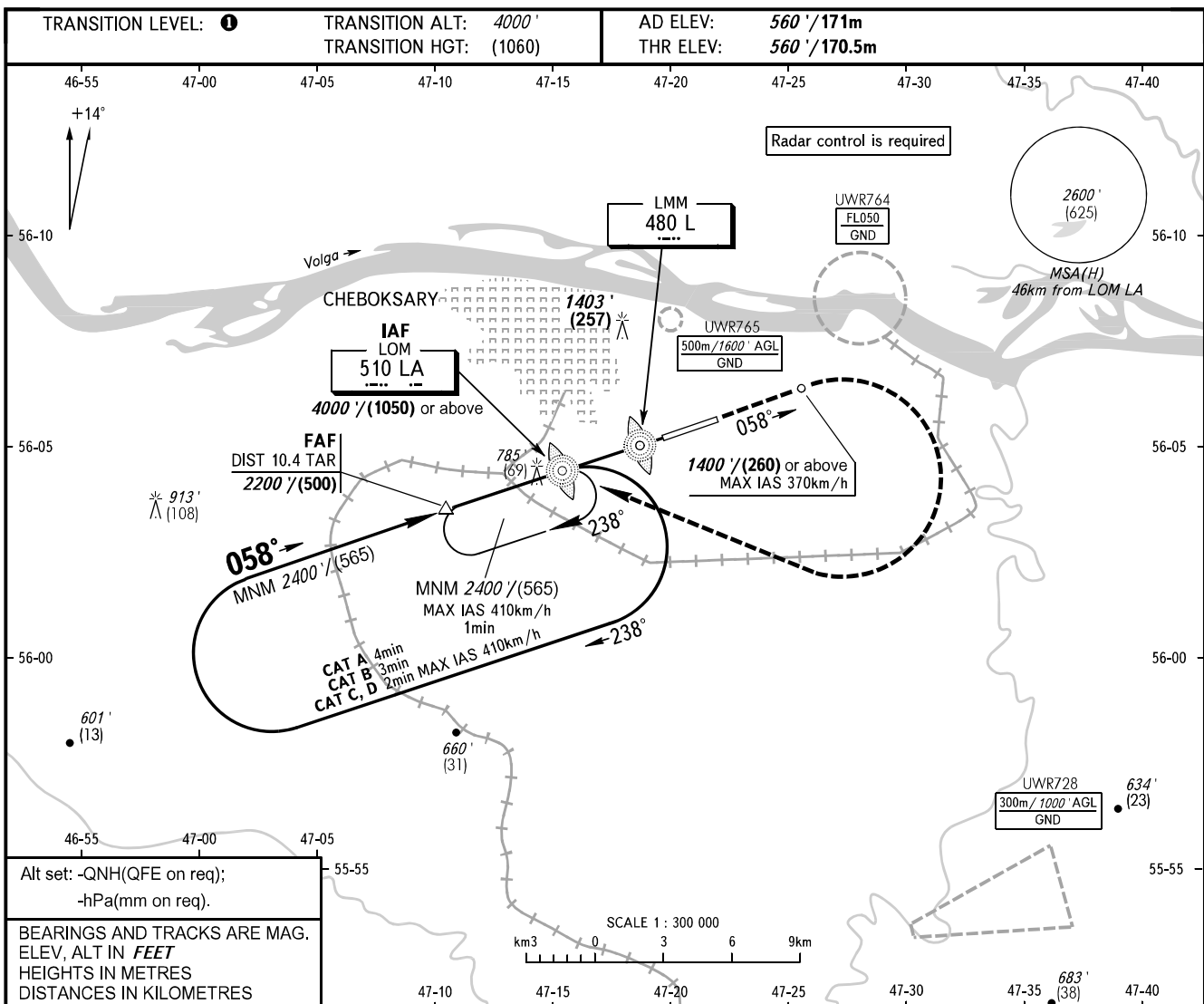


**INSTRUMENT
APPROACH
CHART - ICAO**

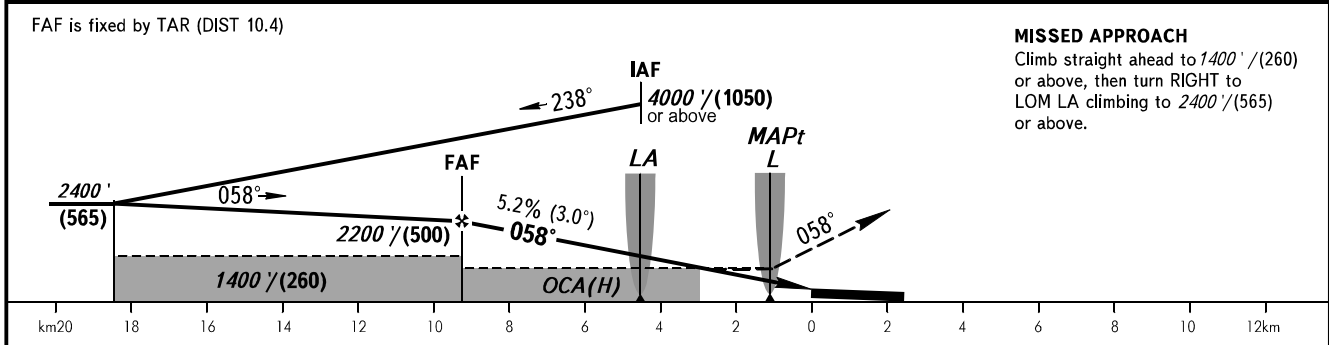
TOWER **119.300**

CHEBOKSARY, RUSSIA
CHEBOKSARY
NDB RWY 06



Alt set: -QNH(QFE on req);
-hPa(mm on req).

BEARINGS AND TRACKS ARE MAG.
ELEV, ALT IN FEET
HEIGHTS IN METRES
DISTANCES IN KILOMETRES



MISSED APPROACH
Climb straight ahead to 1400' (260) or above, then turn RIGHT to LOM LA climbing to 2400' (565) or above.

OCA(H)		A	B	C	D
Straight-in	NDB (LOM)	1040' (480') (150)	1040' (480') (150)	1040' (480') (150)	1040' (480') (150)
	Approach				
Circling		1040' (480') (150)	1060' (500') (155)	1270' (710') / (220)	1440' (880') (270)

1 TRANSITION LEVEL:
- FL050 when QNH is 1013 hPa (760mm mercury column) or above;
- FL060 when QNH is 977 hPa (733mm mercury column) or above, but less than 1013 hPa (760mm mercury column);
- FL070 when QNH is less than 977 hPa (733mm mercury column).

WARNING
Visual manoeuvring NORTH of AD is prohibited.

GROUND SPEED	km/h											
		150	180	210	240	270	300	330	360	390	420	450
RATE OF DESCENT	m/s											
		2.2	2.6	3.0	3.5	3.9	4.3	4.8	5.2	5.6	6.1	6.5
	ft/min											
	427	512	597	682	768	853	938	1024	1109	1194	1280	

CHANGE: New chart