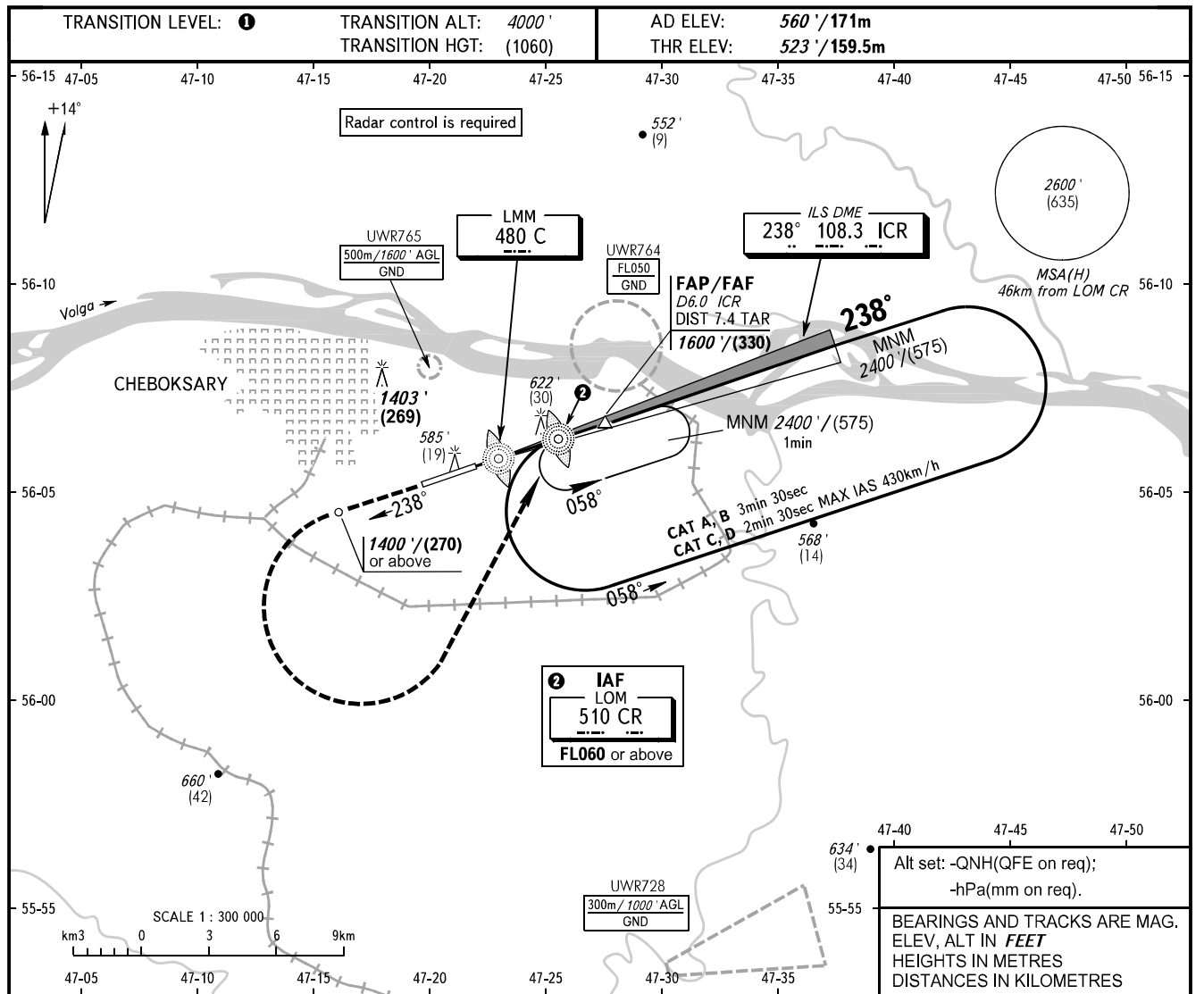


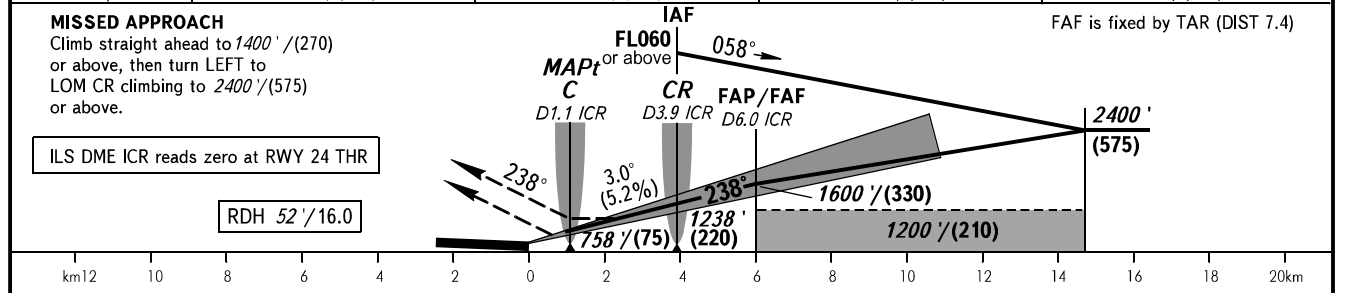
INSTRUMENT
APPROACH
CHART - ICAO

TOWER 119.300

CHEBOKSARY, RUSSIA
CHEBOKSARY
ILS CAT I, LOC RWY 24



DME ICR	2.0	4.0	6.0	8.0
ALTITUDE/HEIGHT	917' / (120)	1258' / (224)	1600' / (330)	1941' / (432)



OCA(H)		A	B	C	D								
Straight-in	CAT I	715' (192') (59)	727' (204') (62)	735' (212') (65)	746' (223') (68)								
	LOC	870' (350') (110)	870' (350') (110)	870' (350') (110)	870' (350') (110)								
Circling		960' (400') (125)	1060' (500') (155)	1270' (710') (220)	1440' (880') (270)								
GROUND SPEED		km/h	150	180	210	240	270	300	330	360	390	420	450
RATE OF DESCENT		m/s	2.2	2.6	3.0	3.5	3.9	4.3	4.8	5.2	5.6	6.1	6.5
		ft/min	427	512	597	682	768	853	938	1024	1109	1194	1280

1 TRANSITION LEVEL:
 - FL050 when QNH is 1013 hPa (760mm mercury column) or above;
 - FL060 when QNH is 977 hPa (733mm mercury column) or above, but less than 1013 hPa (760mm mercury column);
 - FL070 when QNH is less than 977 hPa (733mm mercury column).
WARNING
 Visual manoeuvring north of AD is PROHIBITED.