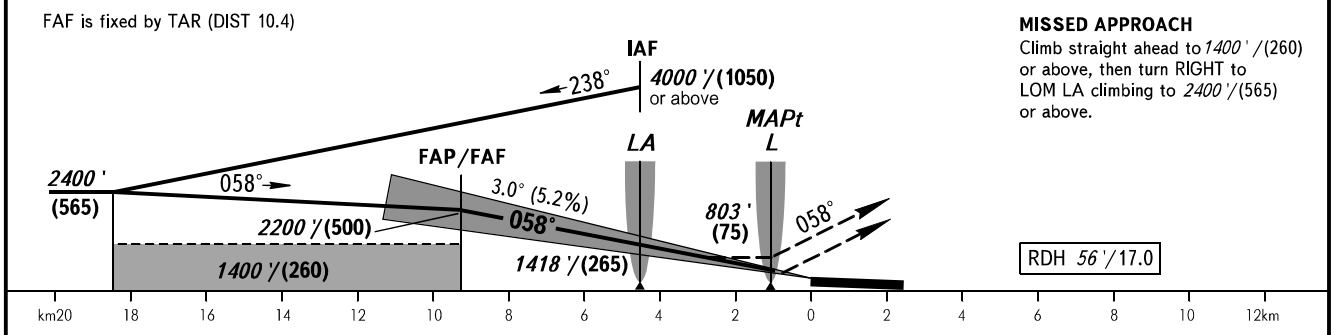
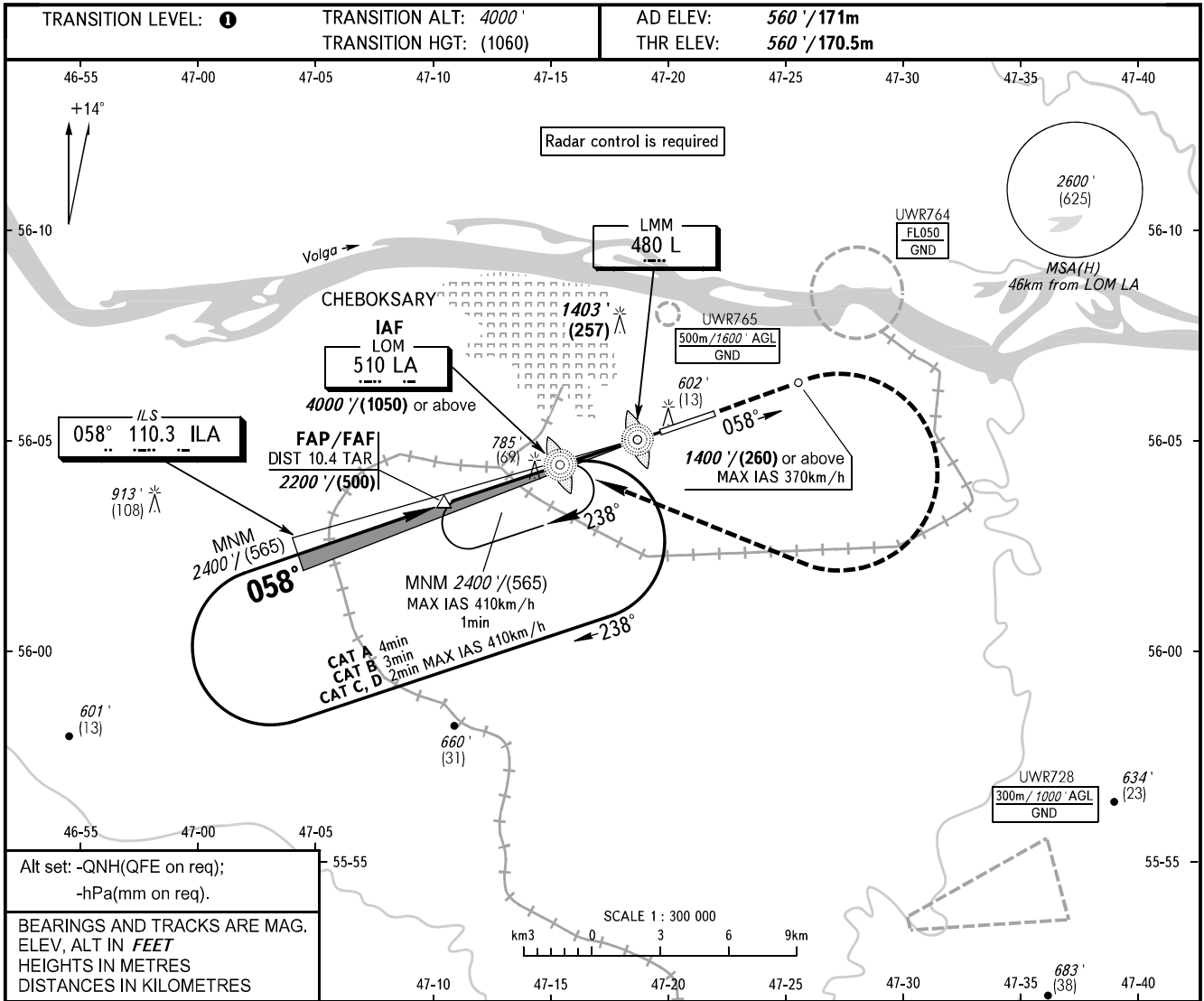


**INSTRUMENT  
APPROACH  
CHART - ICAO**

**CHEBOKSARY, RUSSIA**  
CHEBOKSARY  
ILS CAT I, LOC RWY 06

TOWER **119.300**



OCA(H)		A	B	C	D
Straight-in	<b>CAT I</b>	732' (171') (53)	744' (183') (56)	752' (191') (59)	763' (202') (62)
	<b>LOC</b>	1040' (480') (150)	1040' (480') (150)	1040' (480') (150)	1040' (480') (150)
Circling		1040' (480') (150)	1060' (500') (155)	1270' (710') (220)	1440' (880') (270)

**1 TRANSITION LEVEL:**  
- FLO50 when QNH is 1013 hPa (760mm mercury column) or above;  
- FLO60 when QNH is 977 hPa (733mm mercury column) or above, but less than 1013 hPa (760mm mercury column);  
- FLO70 when QNH is less than 977 hPa (733mm mercury column).

**WARNING**  
Visual manoeuvring north of AD is PROHIBITED.

GROUND SPEED	km/h											
		150	180	210	240	270	300	330	360	390	420	450
RATE OF DESCENT	m/s											
		2.2	2.6	3.0	3.5	3.9	4.3	4.8	5.2	5.6	6.1	6.5
RATE OF DESCENT	ft / min											
		427	512	597	682	768	853	938	1024	1109	1194	1280

CHANGE: NIL