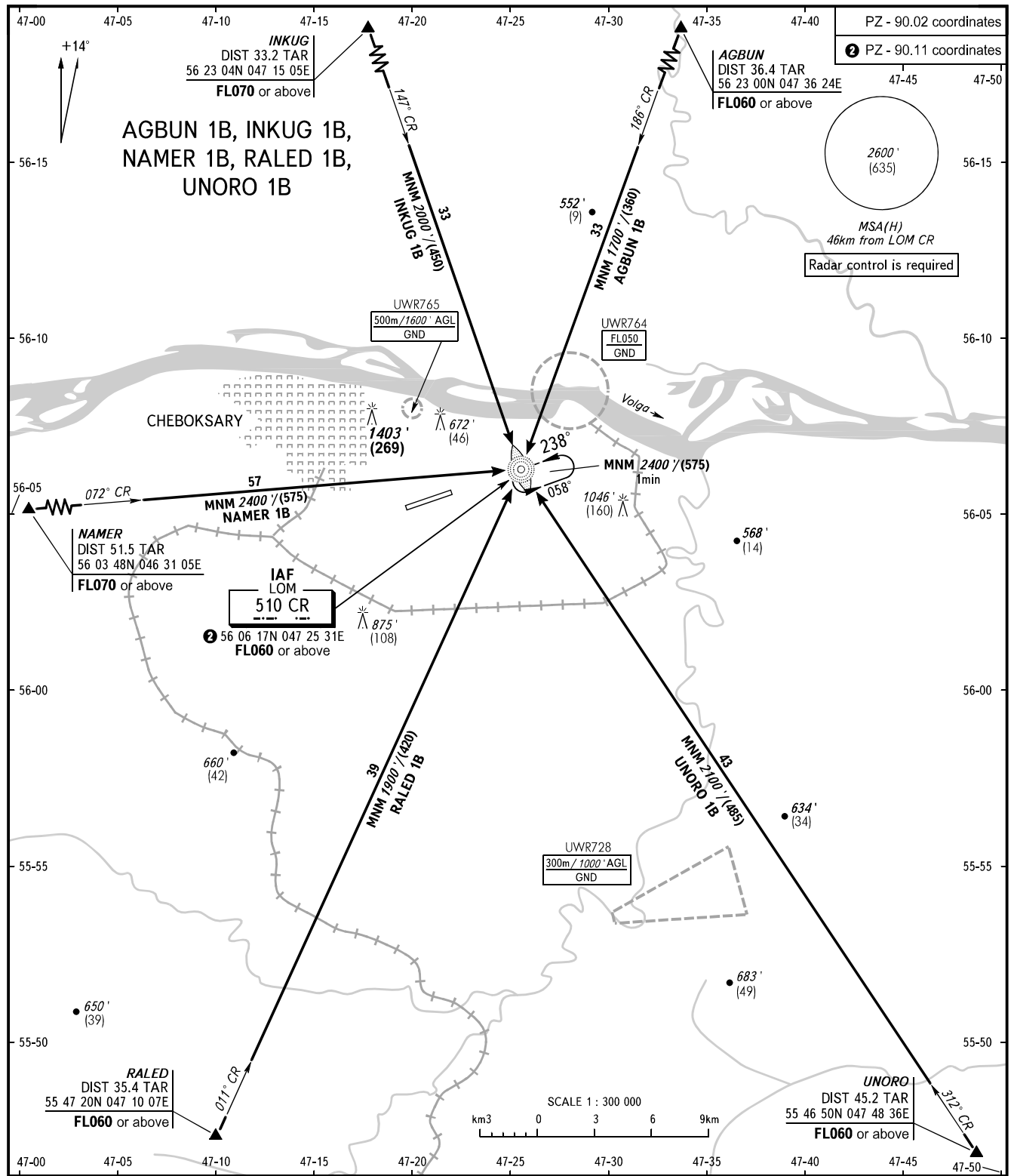


STANDARD ARRIVAL CHART  
INSTRUMENT (STAR) - ICAO

CHEBOKSARY, RUSSIA  
CHEBOKSARY  
RWY 24

TRANSITION  
LEVEL: **1**



<p>TOWER <b>119.300</b></p>	<p><b>1</b> TRANSITION LEVEL:</p> <ul style="list-style-type: none"> <li>- FL050 when QNH is 1013 hPa (760mm mercury column) or above;</li> <li>- FL060 when QNH is 977 hPa (733mm mercury column) or above, but less than 1013 hPa (760mm mercury column);</li> <li>- FL070 when QNH is less than 977 hPa (733mm mercury column).</li> </ul>
<p>BEARINGS AND TRACKS ARE MAGNETIC ALTITUDES AND ELEVATIONS IN <i>FEET</i> HEIGHTS IN METRES DISTANCES IN KILOMETRES</p>	<p>Alt set: -QNH(QFE on req); -hPa(mm on req).</p>