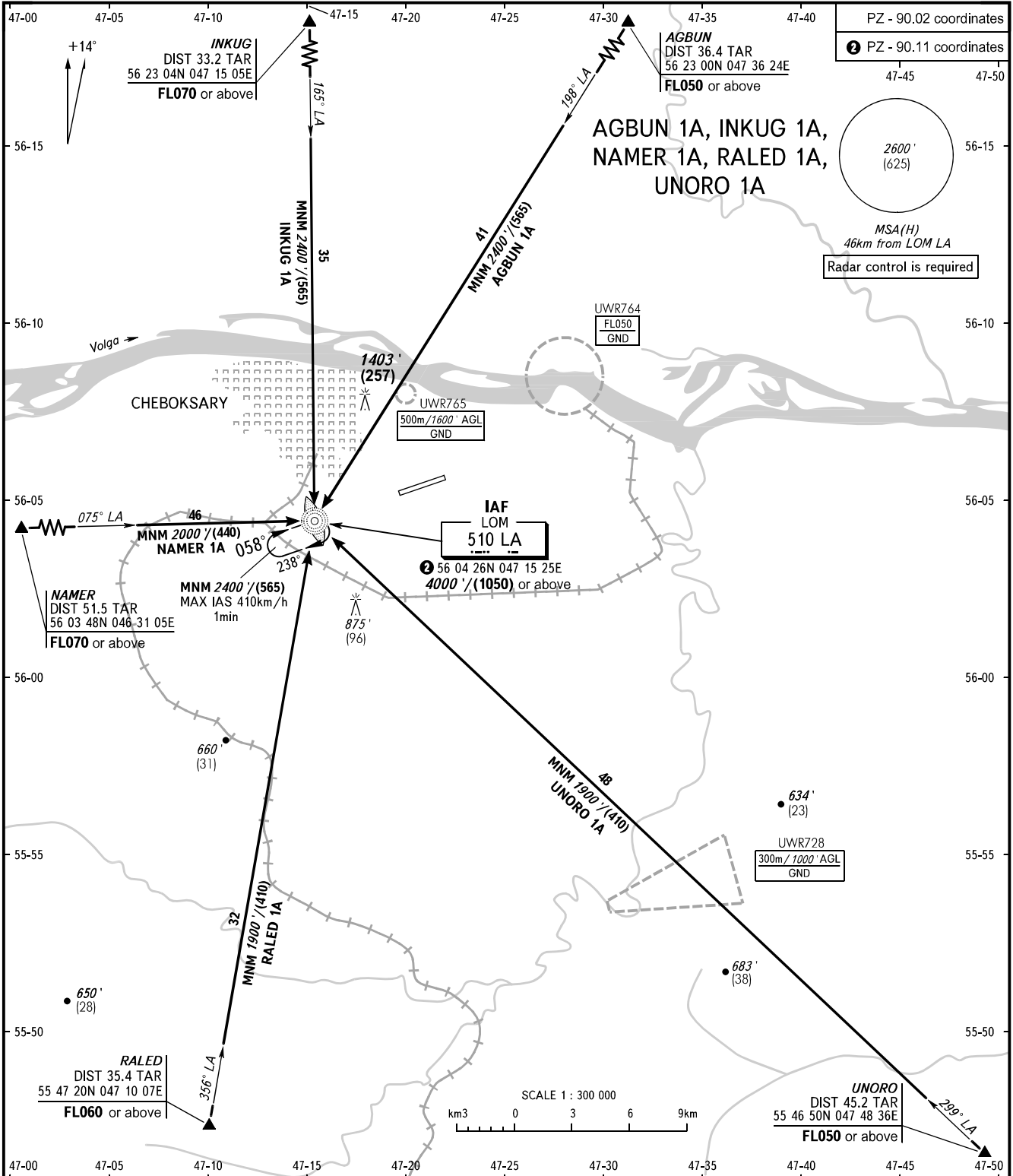


STANDARD ARRIVAL CHART  
INSTRUMENT (STAR) - ICAO

CHEBOKSARY, RUSSIA  
CHEBOKSARY  
RWY 06

TRANSITION  
LEVEL: ①

PZ - 90.02 coordinates  
② PZ - 90.11 coordinates



TOWER 119.300

- ① TRANSITION LEVEL:
- FL050 when QNH is 1013 hPa (760mm mercury column) or above;
  - FL060 when QNH is 977 hPa (733mm mercury column) or above, but less than 1013 hPa (760mm mercury column);
  - FL070 when QNH is less than 977 hPa (733mm mercury column).

BEARINGS AND TRACKS ARE MAGNETIC  
ALTITUDES AND ELEVATIONS IN FEET  
HEIGHTS IN METRES  
DISTANCES IN KILOMETRES

Alt set: -QNH(QFE on req);  
-hPa(mm on req).

CHANGE: New chart