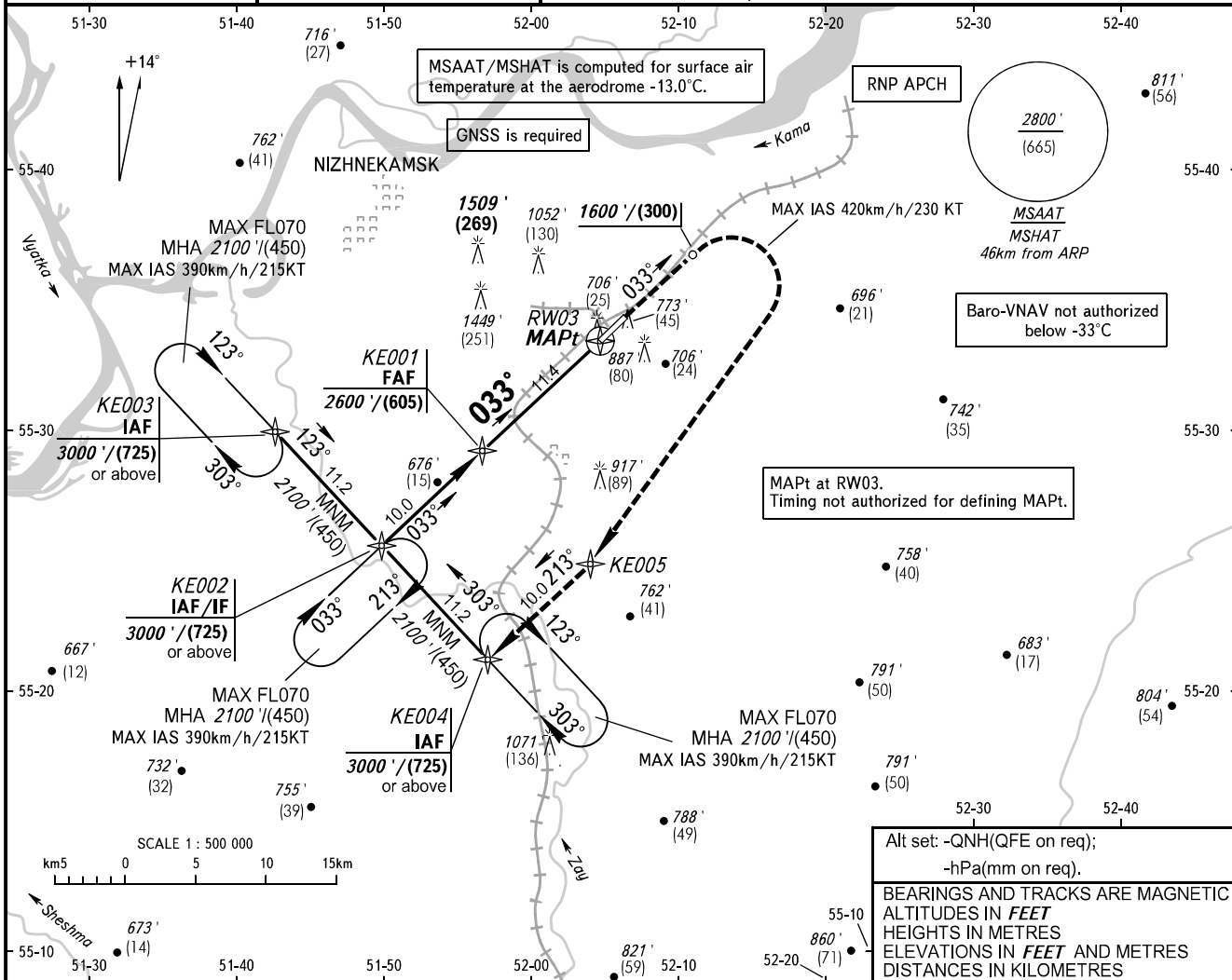


**INSTRUMENT
APPROACH
CHART - ICAO**

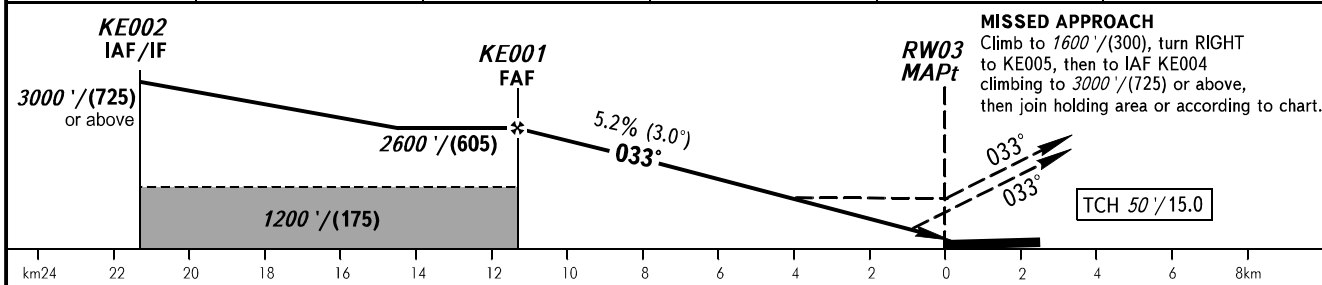
RADAR	127.900
TOWER	127.900
START	121.200

**NIZHNEKAMSK, RUSSIA
BEGISHEVO
RNP RWY 03**

TRANSITION LEVEL: 1	TRANSITION ALT: 4000'	AD ELEV: 643' / 196m
	TRANSITION HGT: (1000)	THR ELEV: 627' / 191.0m



DIST to RW03	10.0	8.0	6.0	4.0	2.0
ALTITUDE/HEIGHT	2390' / (725)	2050' / (625)	1710' / (520)	1370' / (415)	1030' / (310)



OCA(H)		A	B	C	D	1 TRANSITION LEVEL: - FL040 when QNH is 1013 hPa (760mm mercury column) or above; - FL050 when QNH is 977 hPa (733mm mercury column) or above, but less than 1013 hPa (760mm mercury column); - FL060 when QNH is less than 977 hPa (733mm mercury column). Visual manoeuvring in sector 228° - 018° is PROHIBITED.
Straight-in Approach	LNAV/VNAV	835' (254) (64)	848' (258) (68)	856' (260) (70)	905' (276) (85)	
	LNAV	990' (301) (110)	990' (301) (110)	990' (301) (110)	990' (301) (110)	
Circling		1070' (326) (130)	1190' (363) (165)	1290' (393) (195)	1340' (408) (210)	

GROUND SPEED	km/h	150	180	210	240	270	300	330	360	390	420	450
	kt	81	97	113	130	146	162	178	194	211	227	243
RATE OF DESCENT	m/s	2.2	2.6	3.0	3.5	3.9	4.3	4.8	5.2	5.6	6.1	6.5
	ft/min	427	512	597	682	768	853	938	1024	1109	1194	1280

CHANGE: MNM