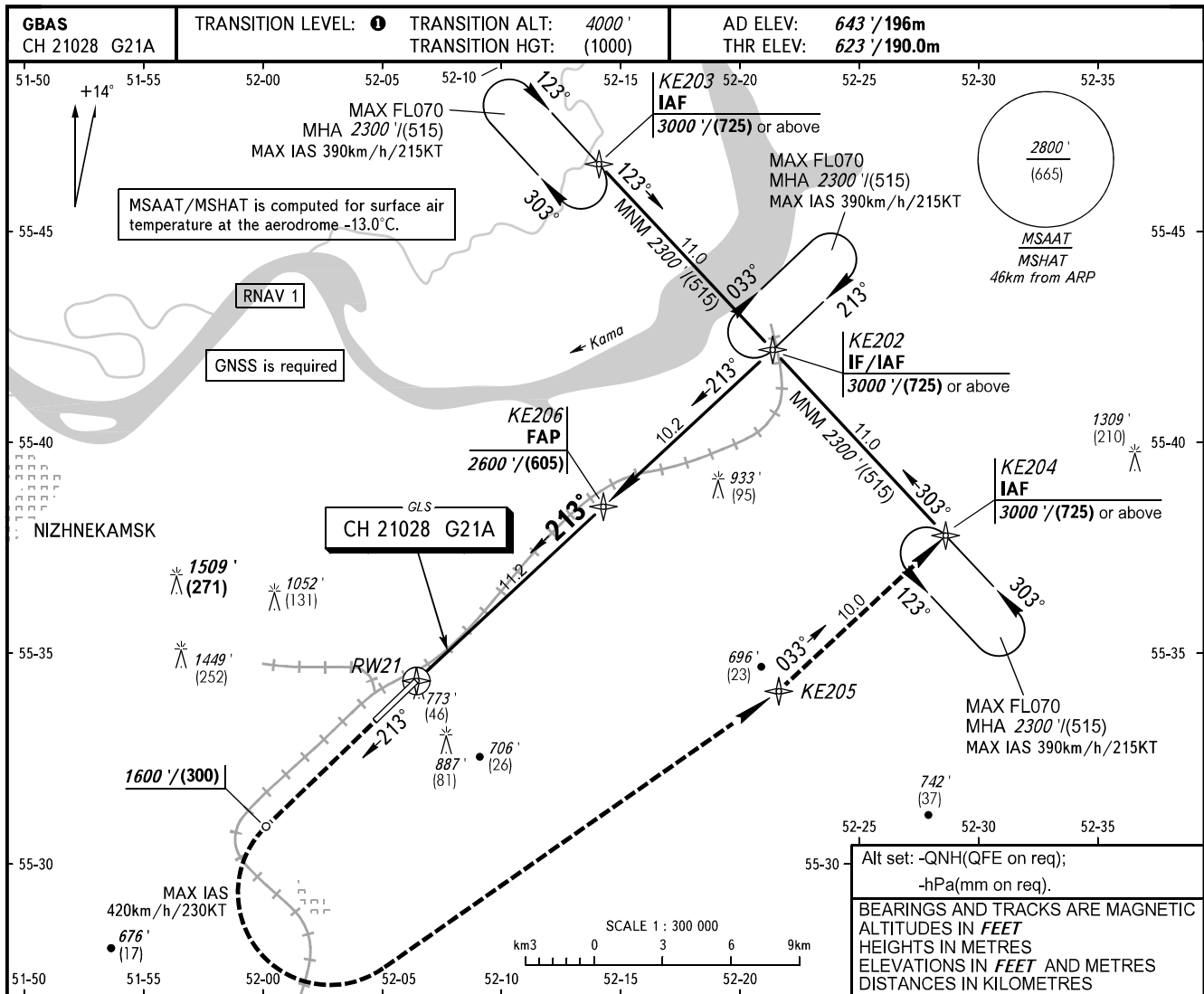


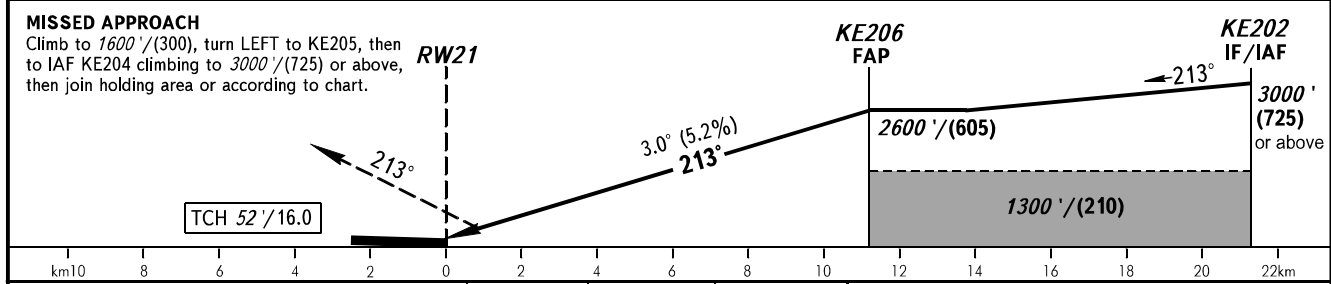
**INSTRUMENT
APPROACH
CHART - ICAO**

**NIZHNEKAMSK, RUSSIA
BEGISHEVO
GLS RWY 21**

RADAR	127.900
TOWER	127.900
START	121.200



DIST to RW21	2.0	4.0	6.0	8.0	10.0
ALTITUDE/HEIGHT	1020' / (120)	1360' / (225)	1700' / (330)	2050' / (435)	2390' / (540)



OCA(H)		A	B	C	D	① TRANSITION LEVEL:										
Straight-in Approach	CAT I	771' (148') (45)	781' (158') (48)	794' (171') (52)	807' (184') (56)	- FL040 when QNH is 1013 hPa (760mm mercury column) or above;										
						- FL050 when QNH is 977 hPa (733mm mercury column) or above, but less than 1013 hPa (760mm mercury column);										
Circling		1070' (430') (130)	1190' (540') (165)	1290' (640') (195)	1340' (690') (210)	- FL060 when QNH is less than 977 hPa (733mm mercury column).	Visual manoeuvring in sector 228° - 018° is PROHIBITED.									
GROUND SPEED	km/h		150	180	210	240	270	300	330	360	390	420	450			
	kt		81	97	113	130	146	162	178	194	211	227	243			
RATE OF DESCENT	m/s		2.2	2.6	3.0	3.5	3.9	4.3	4.8	5.2	5.6	6.1	6.5			
	ft/min		427	512	597	682	768	853	938	1024	1109	1194	1280			