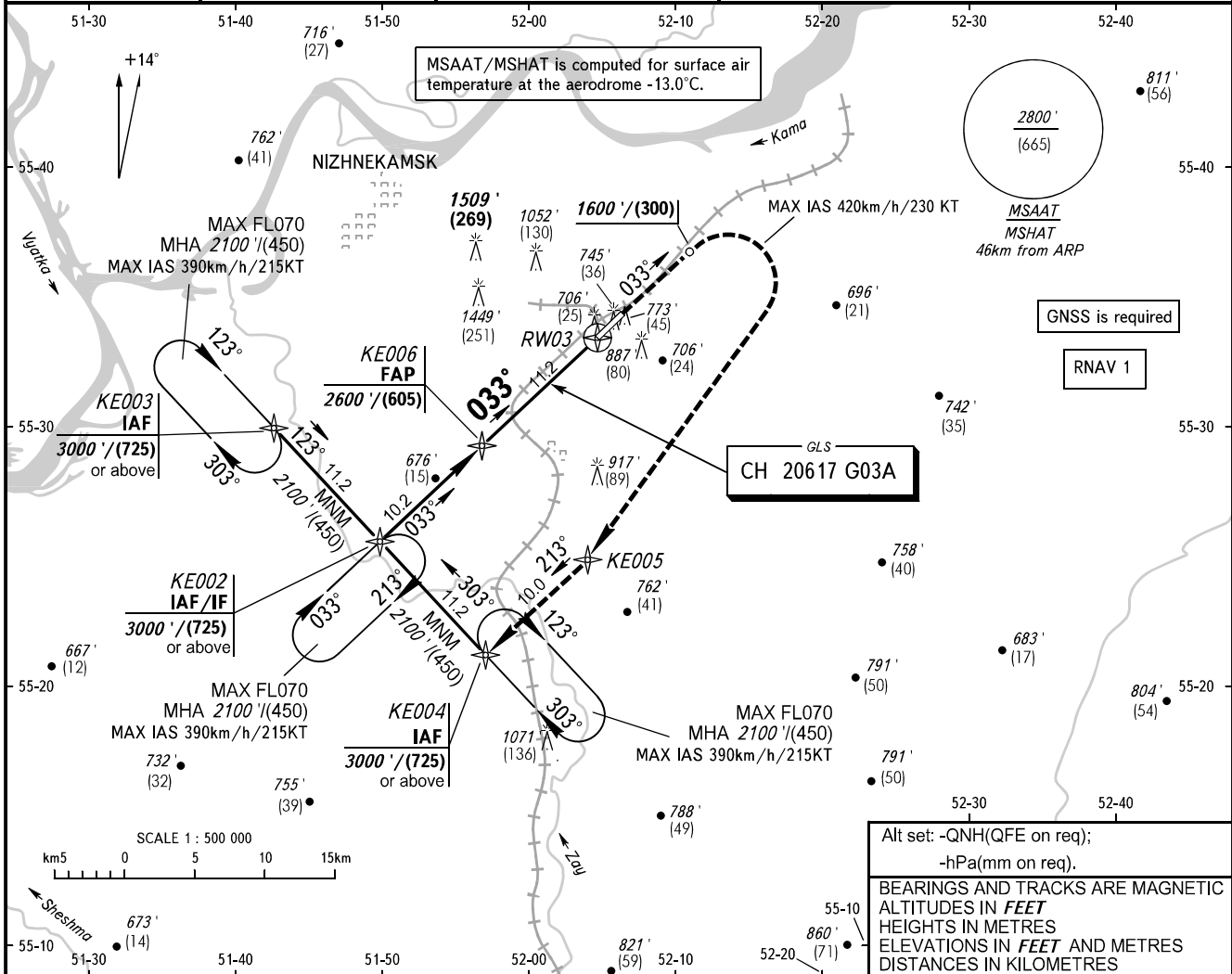


**INSTRUMENT  
APPROACH  
CHART - ICAO**

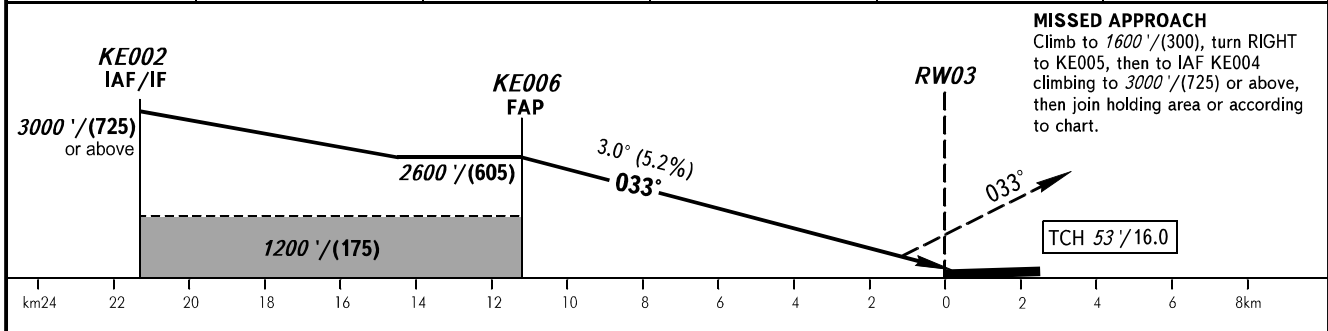
RADAR	127.900
TOWER	127.900
START	121.200

**NIZHNEKAMSK, RUSSIA**  
BEGISHEVO  
GLS RWY 03

<b>GBAS</b> CH 20617 G03A	TRANSITION LEVEL: <b>1</b>	TRANSITION ALT: 4000'	AD ELEV: 643' / 196m
		TRANSITION HGT: (1000)	THR ELEV: 627' / 191.0m



DIST to RW03	10.0	8.0	6.0	4.0	2.0
ALTITUDE/HEIGHT	2390' / (535)	2050' / (435)	1710' / (330)	1370' / (225)	1030' / (120)



OCA(H)		A	B	C	D	<b>1</b> TRANSITION LEVEL: - FLO40 when QNH is 1013 hPa (760mm mercury column) or above; - FLO50 when QNH is 977 hPa (733mm mercury column) or above, but less than 1013 hPa (760mm mercury column); - FLO60 when QNH is less than 977 hPa (733mm mercury column). Visual manoeuvring in sector 228° - 018° is PROHIBITED.									
Straight-in Approach	CAT I	769' (142') (43)	778' (151') (46)	788' (161') (49)	801' (174') (53)										
		1070' (430') (130)	1190' (540') (165)	1290' (640') (195)	1340' (690') (210)										
GROUND SPEED	km/h	150	180	210	240	270	300	330	360	390	420	450			
	kt	81	97	113	130	146	162	178	194	211	227	243			
RATE OF DESCENT	m/s	2.2	2.6	3.0	3.5	3.9	4.3	4.8	5.2	5.6	6.1	6.5			
	ft/min	427	512	597	682	768	853	938	1024	1109	1194	1280			